



Sierrita Operations  
Environment, Land & Water Department  
6200 W Duval Mine Road  
PO Box 527  
Green Valley, AZ 85622-0527

March 31, 2026

**Via Email**

Bret Esslin  
Arizona Department of Environmental Quality  
Water Quality Compliance Section  
1110 West Washington Street  
Phoenix, Arizona 85007-2935

**Re: Mitigation Order on Consent Docket No. P-50-06  
Reporting Year 2025 Mitigation Facilities Monitoring Report**

Dear Mr. Esslin:

In accordance with Section 5.1.1 of the Mitigation Plan<sup>1</sup>, Freeport-McMoRan Sierrita Inc. (Sierrita) submits the enclosed *Mitigation Facilities Monitoring Report* for reporting year 2025.

Prior to March 2015, Sierrita has submitted this report annually under the title of *Well Field Operations Monitoring Report*, which Sierrita agreed to submit in the Mitigation Plan approval deferral letter sent to ADEQ on March 18, 2009<sup>2</sup>.

Please do not hesitate to contact me at (602) 897-2795 if you have any questions regarding this submittal.

Sincerely,

A handwritten signature in black ink, appearing to read 'Glen Means', written over a light-colored rectangular stamp or background.

Glen Means  
Environmental Scientist II

GM:  
20260331\_001

cc: Bryce Romig, Freeport-McMoRan Inc.

---

<sup>1</sup> Clear Creek Associates. 2013. Mitigation Plan for Sulfate with Respect to Drinking Water Supplies in the Vicinity of the Freeport-McMoRan Sierrita Inc. Tailing Impoundment, Mitigation Order on Consent Docket No. P-50-06. December 18, 2013.

<sup>2</sup> Correspondence from Chad D. Fretz, Sierrita, to Cynthia S. Campbell, ADEQ Water Quality Compliance Section, Re: Mitigation Order on Consent Docket No. P-50-06 - Mitigation Plan. March 18, 2010.

**TECHNICAL MEMORANDUM REPORT**



**TO:** Mr. Glen Means  
Environmental Scientist II  
Freeport--McMoRan  
Phoenix Cotton Center  
4340 E Cotton Center Blvd  
Phoenix, AZ 85040

**FROM:** BasinWells Associates, PLLC

**PREPARED BY:** Buck Schmidt, Principal Hydrologist  
BasinWells Associates, PLLC

**REVIEWED BY:** Martin J. Rex, R.G.,  
BasinWells Associates, PLLC

**DATE:** March 27, 2026

**PROJECT NO.:** 20-006

**SUBJECT:** 2025 Freeport – McMoran-Sierrita Inc. - Mitigation Facilities Monitoring Report.

---

**1.0 INTRODUCTION**

This Mitigation Facilities Monitoring Report documents groundwater pumping for the Freeport-McMoRan Sierrita Inc. (Sierrita) Sulfate Mitigation Action Well Field (Well Field) under the *Mitigation Plan for Sulfate with Respect to Drinking Water Supplies in the Vicinity of the Freeport-McMoran Sierrita Inc. Tailing Impoundment, Mitigation Order on Consent, Docket No. P-50-06* (Clear Creek Associates PLC, 2013). This report describes wellfield and conveyance operational conditions for calendar year 2025 and consists of data for pumping system availability, well pumping rates, and total system pumping. The actual system pumping is compared to design specifications to assess the mitigation facilities with respect to their mechanical capacity to pump and convey the required volumes of water.

The Well Field consists of two major parts: the Interceptor Well Field and the Mitigation Well Field. The Interceptor Well Field currently consists of 26 active interceptor wells (IWs). The Mitigation Well Field consists of four plume stabilization (PS) wells, four mass capture (MC) wells, and six focused feasibility study (FFS) wells. The PS, MC, and FFS wells were installed between 2011 and 2013 with full operation occurring in early 2014. The locations of the wells of the Well Field are shown on Figure 1. Table 1 tabulates well information including cadastral legal locations; performance and target yield rates; well construction details; completion date and well age.





**TABLE 1. SIERRITA SULFATE MITIGATION ACTION WELL FIELD CONSTRUCTION INFORMATION (Notes: ft bls = feet below land surface; in. = inches; HSLA = High Strength Low Alloy Steel)**

Well	Cadastral Location	ADWR Reg. No. (55-)	2021-2025 Performance Goal Pumping Rates (gpm)	Target Pumping Rates (gpm)	Well Depth (ft)	Well Dia. (in.)	Borehole Diameter (in.)	Casing Material	Upper Screen Depth (ft bls)	Lower Screen Depth (ft bls)	Pump Gallery?/Interval (ft bls)	Current Pump Setting (ft bls)	Filter Pack Material	Basinfill Alluvium Base Depth (ft bls)	Drill Year	Well Age
IW-1	D-18-13 29DCD	623129	250	250	855	14	0	STEEL	234	843	No	480	GRAVEL	760	1978	47.7
IW-2A	D-18-13 28CCC	216464	300	300	1051	14	20	STEEL	350	1031	600-640	620	GRAVEL	1020	2008	18.0
IW-3A	D-18-13 28CBC	201732	500	500	1052	14	20	STEEL	400	1030	No	540	GRAVEL	820	2004	22.2
IW-8	D-18-13 28BCC	508236	350	350	783	14	20	STEEL	382	783	No	540	GRAVEL	759	1984	41.7
IW-9	D-18-13 28BCC	508238	200	200	853	14	20	STEEL	412	853	No	605	GRAVEL	740	1984	41.7
IW-4	D-18-13 28BCB	623132	40	40	946	14	0	STEEL	312	946	No	600	GRAVEL	490	1978	47.7
IW-24	D-18-13 28BBB	200556	50	50	884	14	20	STEEL	348	860	No	602	GRAVEL	410	2004	22.2
IW-5A	D-18-13 28BBB	219131	40	40	900	14.5	20	STAINLESS STEEL	382	890	620-640	630	TACNA	436	2010	15.9
IW-23	D-18-13 21CCB	200555	120	120	964	14	20	STEEL	375	935	No	550	TACNA	420	2004	22.2
IW-10	D-18-13 21CBC	508237	250	250	831	14	20	STEEL	420	831	No	600	GRAVEL	730	1984	41.6
IW-22	D-18-13 21CBC	200554	300	300	590	14	20	STEEL	359	560	No	550	GRAVEL	550	2004	22.2
IW-11	D-18-13 21CBC	508235	325	325	605	14	20	STEEL	371	605	No	500	GRAVEL	563	1984	41.6
IW-6A	D-18-13 21BCC	545565	80	80	497	12	20	STEEL	356	456	No	460	GRAVEL	456	1994	31.3
IW-12	D-18-13 21BCB	545555	125	125	600	12	20	STEEL	358	560	No	560	GRAVEL	498	1994	31.3
IW-13	D-18-13 21BBC	545556	0	0	497	12	20	STEEL	355	456	No	460	GRAVEL	452	1994	31.3
IW-14	D-18-13 21BBB	545557	60	60	549	12	20	STEEL	357	508	No	520	GRAVEL	509	1994	31.3
IW-15	D-18-13 16CCC	545558	40	40	547	12	20	STEEL	357	506	No	505	GRAVEL	507	1995	31.2
IW-19	D-18-13 16BCC	545562	150	150	540	12	20	STEEL	379	499	No	522	GRAVEL	498	1995	31.2
IW-20	D-18-13 16BCB	545563	0	0	502	12	20	STEEL	380	460	No	460	GRAVEL	470	1995	31.1
IW-21	D-18-13 16BBC	545564	100	100	601	12	20	STEEL	400	560	No	520	GRAVEL	520	1995	31.2
IW-25	D-18-13 28CBD	219596	400	400	782	16	24	STAINLESS STEEL	359	720	No	732	SILICA SAND	475	2010	15.4
IW-26	D-18-13 28BCD	219143	350	350	780	16	24	STAINLESS STEEL	340	720	No	732	SILICA SAND	475	2010	15.4
IW-27	D-18-13 28BBD	219136	100	100	720	14	22	STAINLESS STEEL	380	660	No	672	SILICA SAND	465	2010	15.4
IW-28	D-18-13 21CCA	219137	400	400	760	16	24	STAINLESS STEEL	380	700	No	712	SILICA SAND	680	2010	15.4
IW-29	D-18-13 21CDA	222865	0	0	770	16.62	24	STAINLESS STEEL	440	730	No	0	SILICA SAND	730	2014	12.0
PS-1	D-18-13 03BBA	220861	750	700	1020	16.62	24	HSLA	560	980	640-680	890	SILICA SAND	914	2011	14.3
PS-2	D-17-13 34CDC	220862	800	800	1130	16.62	24	HSLA	560	1090	640-680	870	SILICA SAND	1090	2012	13.9
PS-3	D-17-13 34CDD	220863	800	800	1200	16.62	24	HSLA	520	1160	600-640	0	SILICA SAND	1160	2012	13.9
PS-4	D-18-13 03BCA	220864	1000	1000	1060	16.62	24	HSLA	560	1020	640-680	893	SILICA SAND	1020	2012	13.8
MC-1	D-18-13 16DAA	221660	0	900	915	16.62	24	HSLA	479	875	599-639	824	SILICA SAND	875	2013	12.9
MC-2	D-18-13 10CCB	221761	0	700	980	16.62	24	HSLA	479	940	600-640	855	SILICA SAND	940	2013	13.1
MC-3	D-18-13 09AAA	221661	750	600	870	16.62	24	HSLA	530	810	No	830	SILICA SAND	810	2012	13.4
MC-4	D-18-13 04DDC	220842	600	600	830	16.62	24	HSLA	560	770	No	810	SILICA SAND	770	2012	13.7
MC-5	D-18-13 09ADB	238240	0	0	809	16.62	26	HSLA, STAINLESS	608	768	No	0	SILICA SAND	780	2023	3.0
MC-6	D-18-13 09DDB	238394	0	0	888	16.62	26	HSLA, STAINLESS	587	847	No	0	SILICA SAND	>940	2023	2.9
FFS-1	D-18-13 21ABC	221662	338	800	790	16.62	24	HSLA	448	729	No	753	SILICA SAND	730	2013	13.0
FFS-2	D-18-13 16DCA	221663	300	700	750	16.62	24	HSLA	470	690	No	703	SILICA SAND	680	2013	13.0
FFS-3	D-18-13 16ACD	221664	225	400	800	16.62	24	HSLA	510	740	No	762	SILICA SAND	736	2013	13.2
FFS-4	D-18-13 16ABA	221665	150	200	871	16.62	24	HSLA	540	830	640-680	788	SILICA SAND	830	2012	13.3
FFS-5	D-18-13 09DBA	221666	225	1000	800	16.62	24	HSLA	569	739	No	775	SILICA SAND	740	2012	13.3
FFS-6	D-18-13 09ACA	221667	225	600	830	16.62	24	HSLA	528	769	No	750	SILICA SAND	770	2012	13.4

**2.0 WELL FIELD OPERATIONS**

Total groundwater withdrawals in 2025 of the Well Field are tabulated on Table 2. The well field withdrew approximately 17,581 acre-feet (AF) of groundwater in 2025 (average pumping rate of 10,902 gpm).

TABLE 2. 2025 SIERRITA SULFATE MITIGATION ACTION WELL FIELD TOTAL GROUNDWATER WITHDRAWAL	
Total Gallons Pumped:	5,728,788,593
Total Acre-Feet Pumped:	17,581

The Well Field, in total, produced approximately 102 percent of, the performance goals with respect to potential total groundwater withdrawal considering the 2021-2025 performance goal rates (Table 1) at a 100% duty cycle (total pumping rate of 10,693 gpm or 17,247 AF).

The Well Field, in total, produced approximately 76.1 percent of the target goals with respect to potential total groundwater withdrawal considering the target goal rates (Table 1) at a 100% duty cycle (total pumping rate of 14,330 gpm or 23,113 AF).

Well performance in 2025 on a well-by-well basis is tabulated in Attachment A. Run time percentages of the Interceptor Well Field wells, if active in 2025, ranged from 43 to 95 percent when active. Run time percentages of the Mitigation Well Field wells ranged from 71 to 97 percent. IW-5A, IW-6A, IW-13, IW-14, IW-15, and IW-20 have zero runtime percentages in 2025 due to low flow conditions and are not considered for re-activation and will be used as monitor wells. IW-19 also had zero runtime percentages in 2025 due to a casing collapse. Replacement well in planning stage.

Shutdown of wells was required due the following:

- As needed well and transmission line maintenance activities,
- Perform non-pumping monitoring activities,
- Exceedance of storage capacity of the Mill Reservoir.

Well field data plots including a well construction diagram; static and pumping water levels; yield rates; calculated specific capacity; sulfate concentrations; static saturated thickness of basin fill alluvium; and annotated descriptions of maintenance activities from 2017 to 2026 are included in Attachment B.

**3.0 SUMMARY OF WELL MAINTENANCE ACTIVITIES**

Summary of well and pump maintenance activities performed in 2025 are tabulated on Table 3 below. All maintenance activities were performed following collection and evaluation of maintenance monitoring parameters as described in the *Sulfate Mitigation Action Well Field (Well Field) Operation and Maintenance Plan* (BasinWells, 2013).

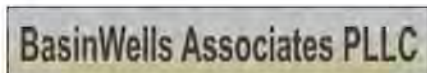


TABLE 3. 2024 SIERRITA MITIGATION ACTION WELL FIELD SUMMARY OF WELL AND PUMP MAINTENANCE ACTIVITIES		
Well	Approx. Months Off Line for Maintenance and/or Evaluation	Maintenance Activities
IW-2A	Mar-May; Oct	Mar-May: Rehabbed. Oct: New flow meter installed
IW-3A	Jan-Mar; Jul- Aug	Jan-Mar: Brush and bail, jetting with Water Safe AR. July-Aug: Rehabbed, motor replaced and commissioned in August.
IW-4	Jun-Sep	June-Sep: Down BO motor, working on replacement motor and rehab. Back online mid-September.
IW-8	Jan-Mar; Sep-Dec	Jan-Mar: New pump and well rehab. Sep-Dec: down (bad motor/liner need noted). Oct-Nov: liner on-site 11/18, welded 11/20. Liner installed in December followed by rehab activities.
IW-11	January	New pump and rehab completed.
IW-12	Aug-Dec	New motor, liner installed and rehabbed .
IW-19	2025 (inactive; replacement planning)	Casing collapse / unsuccessful airlifting.
IW-21	Mar-Apr	Broken valve replaced.
IW-26	May-June; Oct-Nov	May-June: Well rehabbed. Oct-Nov: Down, BO motor. Pump rebuilt and replaced
IW-27	Nov-Dec	Well rehabbed.
IW-29	Aug-Oct	Aug-Oct: New check valve installed. Rehabbed, rebuilt pump bowl and new shaft installed.
MC-2	May-June	New motor installed.
PS-1	October	October: Down; motor/pump. Pump bowl and shaft rebuilt. Well rehabbed.
PS-2	Apr-May	Well rehabbed.
FFS-2	October	Motor replaced.
FFS-4	June-July	Well rehabbed and new pump installed.
FFS-6	July-Aug	Well rehabbed.

Note: Water Safe AR™ is a patented synthetic acid.

#### 4.0 FUTURE MAINTENANCE ACTIVITIES

Future maintenance activities will continue to adhere to activities and frequencies as described in *Sulfate Mitigation Action Well Field Operation and Maintenance Plan* (BasinWells, 2013). All maintenance activities to be performed following collection and evaluation of maintenance monitoring parameters.

Additionally, a replacement and a new well have been drilled and tested in 2023 for the Mitigation Well Field. Equipping of the wells is pending. The replacement well for FFS-6 is located about 600 feet east of

the original well and is designated as MC-5. The new well is located about 1,500 feet southeast of FFS-5 and will be designated as MC-6.

It is anticipated that the wells will be activated in 2026. Target yield rate of MC-5 is 900 gpm and target yield rate of MC-6 is 800 gpm.

Replacement well for IW-19 in the initial planning stage.

## 5.0 REFERENCES

BasinWells Associates, PLLC, *Freeport-McMoran Sierrita Inc., Sulfate Mitigation Action Well Field (Well Field) Operation and Maintenance Plan*, December 31, 2013.

Clear Creek Associates, PLC, *Mitigation Plan for Sulfate with Respect to Drinking Water Supplies in the Vicinity of the Freeport-McMoran Sierrita Inc. Tailing Impoundment, Mitigation Order on Consent, Docket No. P-50-06*, December 18, 2013.

**BasinWells Associates PLLC**

ATTACHMENT A

---

**SIERRITA SULFATE MITIGATION ACTION WELL FIELD PERFORMANCE SUMMARY**



**ATTACHMENT A.  
SUMMARY OF 2025 INTERCEPTOR WELL PERFORMANCE  
FREEPORT MCMORAN SIERRITA, INC.**

Well	Month	Gallons Pumped	Estimated Hours	Yield (Acrefeet)	Approx. Yield Rate (gpm)
IW-1	Jan	10,377,969	607	31.8	285
	Feb	8,988,399	526	27.6	285
	Mar	10,729,557	627	32.9	285
	Apr	9,171,069	536	28.1	285
	May	8,556,103	500	26.3	285
	Jun	8,934,818	523	27.4	285
	Jul	9,527,024	557	29.2	285
	Aug	9,261,756	542	28.4	285
	Sep	8,491,045	497	26.1	285
	Oct	9,271,730	542	28.5	285
	Nov	8,606,683	503	26.4	285
	Dec	8,393,648	491	25.8	285

<b>IW-1 Total Gallons Pumped:</b>	<b>110,309,801</b>
<b>IW-1 Total Acre-Feet Pumped:</b>	<b>339</b>
<b>IW-1 Average Yield Rate (gpm):</b>	<b>285</b>
<b>IW-1 % Run Time:</b>	<b>73.6%</b>

Well	Month	Gallons Pumped	Estimated Hours	Yield (Acrefeet)	Approx. Yield Rate (gpm)
IW-2A	Jan	3,740,067	462	11.5	135
	Feb	1,932,903	239	5.9	135
	Mar	1,583,354	195	4.9	135
	Apr	1,946,002	240	6.0	135
	May	2,205,697	272	6.8	135
	Jun	2,123,137	262	6.5	135
	Jul	3,211,827	397	9.9	135
	Aug	1,129,504	139	3.5	135
	Sep	873,059	108	2.7	135
	Oct	4,202,617	519	12.9	135
	Nov	4,541,415	561	13.9	135
	Dec	3,161,180	390	9.7	135

<b>IW-2A Total Gallons Pumped:</b>	<b>30,650,762</b>
<b>IW-2A Total Acre-Feet Pumped:</b>	<b>94</b>
<b>IW-2A Average Yield Rate (gpm):</b>	<b>135</b>
<b>IW-2A % Run Time:</b>	<b>43.2%</b>

Well	Month	Gallons Pumped	Estimated Hours	Yield (Acrefeet)	Approx. Yield Rate (gpm)
IW-3A	Jan	0	0	0.0	
	Feb	0	0	0.0	
	Mar	9,817,407	336	30.1	487
	Apr	18,036,954	617	55.3	487
	May	17,951,720	614	55.1	487
	Jun	16,099,289	551	49.4	487
	Jul	546	0	0.0	487
	Aug	6,810,176	233	20.9	487
	Sep	20,975,451	718	64.4	487
	Oct	20,774,565	711	63.8	487
	Nov	19,296,187	660	59.2	487
	Dec	18,927,605	648	58.1	487

<b>IW-3A Total Gallons Pumped:</b>	<b>148,689,900</b>
<b>IW-3A Total Acre-Feet Pumped:</b>	<b>456</b>
<b>IW-3A Average Yield Rate (gpm):</b>	<b>487</b>
<b>IW-3A % Run Time:</b>	<b>58.1%</b>

Well	Month	Gallons Pumped	Estimated Hours	Yield (Acrefeet)	Approx. Yield Rate (gpm)
IW-8	Jan	8,612,978	581	26.4	247
	Feb	0	0	0.0	
	Mar	7,440,345	502	22.8	247
	Apr	8,840,140	597	27.1	247
	May	9,322,256	629	28.6	247
	Jun	9,062,582	612	27.8	247
	Jul	10,996,206	742	33.7	247
	Aug	9,582,458	647	29.4	247
	Sep	6,506,922	439	20.0	247
	Oct	0	0	0.0	
	Nov	0	0	0.0	
	Dec	0	0	0.0	

<b>IW-8 Total Gallons Pumped:</b>	<b>70,363,887</b>
<b>IW-8 Total Acre-Feet Pumped:</b>	<b>216</b>
<b>IW-8 Average Yield Rate (gpm):</b>	<b>247</b>
<b>IW-8 % Run Time:</b>	<b>54.2%</b>

Well	Month	Gallons Pumped	Estimated Hours	Yield (Acrefeet)	Approx. Yield Rate (gpm)
IW-9	Jan	7,988,764	672	24.5	198
	Feb	7,375,050	621	22.6	198
	Mar	8,846,950	745	27.1	198
	Apr	7,056,553	594	21.7	198
	May	7,576,346	638	23.2	198
	Jun	8,077,887	680	24.8	198
	Jul	8,459,821	712	26.0	198
	Aug	8,440,248	710	25.9	198
	Sep	7,745,630	652	23.8	198
	Oct	8,573,794	722	26.3	198
	Nov	8,204,358	691	25.2	198
	Dec	8,136,481	685	25.0	198

<b>IW-9 Total Gallons Pumped:</b>	<b>96,481,882</b>
<b>IW-9 Total Acre-Feet Pumped:</b>	<b>296</b>
<b>IW-9 Average Yield Rate (gpm):</b>	<b>198</b>
<b>IW-9 % Run Time:</b>	<b>92.7%</b>

Well	Month	Gallons Pumped	Estimated Hours	Yield (Acrefeet)	Approx. Yield Rate (gpm)
IW-4	Jan	4,182,335	677	12.8	103
	Feb	3,429,064	555	10.5	103
	Mar	3,306,635	535	10.1	103
	Apr	3,466,906	561	10.6	103
	May	3,828,047	619	11.7	103
	Jun	3,813,676	617	11.7	103
	Jul	3,201,356	518	9.8	103
	Aug	0	0	0.0	
	Sep	2,338,576	378	7.2	103
	Oct	4,555,380	737	14.0	103
	Nov	4,444,485	719	13.6	103
	Dec	4,458,605	721	13.7	103

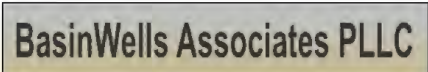
<b>IW-4 Total Gallons Pumped:</b>	<b>41,025,065</b>
<b>IW-4 Total Acre-Feet Pumped:</b>	<b>126</b>
<b>IW-4 Average Yield Rate (gpm):</b>	<b>103</b>
<b>IW-4 % Run Time:</b>	<b>75.8%</b>

Well	Month	Gallons Pumped	Estimated Hours	Yield (Acrefeet)	Approx. Yield Rate (gpm)
IW-24	Jan	1,491,550	742	4.6	34
	Feb	1,282,144	638	3.9	34
	Mar	1,230,128	612	3.8	34
	Apr	1,206,299	600	3.7	34
	May	1,429,971	711	4.4	34
	Jun	1,175,382	585	3.6	34
	Jul	1,416,565	705	4.3	34
	Aug	1,377,476	685	4.2	34
	Sep	1,339,034	666	4.1	34
	Oct	1,316,601	655	4.0	34
	Nov	1,145,090	570	3.5	34
	Dec	1,301,282	647	4.0	34

<b>IW-24 Total Gallons Pumped:</b>	<b>15,711,522</b>
<b>IW-24 Total Acre-Feet Pumped:</b>	<b>48</b>
<b>IW-24 Average Yield Rate (gpm):</b>	<b>34</b>
<b>IW-24 % Run Time:</b>	<b>89.2%</b>

Well	Month	Gallons Pumped	Estimated Hours	Yield (Acrefeet)	Approx. Yield Rate (gpm)
IW-5A	Jan	0	0	0.0	0
	Feb	0	0	0.0	0
	Mar	0	0	0.0	0
	Apr	0	0	0.0	0
	May	0	0	0.0	0
	Jun	0	0	0.0	0
	Jul	0	0	0.0	0
	Aug	0	0	0.0	0
	Sep	0	0	0.0	0
	Oct	0	0	0.0	0
	Nov	0	0	0.0	0
	Dec	0	0	0.0	0

<b>IW-5A Total Gallons Pumped:</b>	<b>0</b>
<b>IW-5A Total Acre-Feet Pumped:</b>	<b>0</b>
<b>IW-5A Average Yield Rate (gpm):</b>	<b>0</b>
<b>IW-5A % Run Time:</b>	<b>0.0%</b>



**ATTACHMENT A.  
SUMMARY OF 2025 INTERCEPTOR WELL PERFORMANCE  
FREEPORT MCMORAN SIERRITA, INC.**

Well	Month	Gallons Pumped	Estimated Hours	Yield (Acrefeet)	Approx. Yield Rate (gpm)
IW-23	Jan	4,178,828	718	12.8	97
	Feb	3,604,842	619	11.1	97
	Mar	4,289,874	737	13.2	97
	Apr	3,674,107	631	11.3	97
	May	4,027,768	692	12.4	97
	Jun	4,091,789	703	12.6	97
	Jul	4,330,293	744	13.3	97
	Aug	4,213,359	724	12.9	97
	Sep	3,911,669	672	12.0	97
	Oct	4,163,245	715	12.8	97
	Nov	3,934,279	676	12.1	97
	Dec	3,969,023	682	12.2	97

<b>IW-23 Total Gallons Pumped:</b>	<b>48,389,076</b>
<b>IW-23 Total Acre-Feet Pumped:</b>	<b>148</b>
<b>IW-23 Average Yield Rate (gpm):</b>	<b>97</b>
<b>IW-23 % Run Time:</b>	<b>94.9%</b>

Well	Month	Gallons Pumped	Estimated Hours	Yield (Acrefeet)	Approx. Yield Rate (gpm)
IW-10	Jan	19,574,227	642	60.1	508
	Feb	16,521,125	542	50.7	508
	Mar	10,590,766	347	32.5	508
	Apr	9,331,638	306	28.6	508
	May	17,503,691	574	53.7	508
	Jun	18,526,384	608	56.9	508
	Jul	20,627,316	677	63.3	508
	Aug	16,062,693	527	49.3	508
	Sep	17,377,535	570	53.3	508
	Oct	14,161,442	465	43.5	508
	Nov	11,565,975	379	35.5	508
	Dec	17,618,602	578	54.1	508

<b>IW-10 Total Gallons Pumped:</b>	<b>189,461,394</b>
<b>IW-10 Total Acre-Feet Pumped:</b>	<b>581</b>
<b>IW-10 Average Yield Rate (gpm):</b>	<b>508</b>
<b>IW-10 % Run Time:</b>	<b>71.0%</b>

Well	Month	Gallons Pumped	Estimated Hours	Yield (Acrefeet)	Approx. Yield Rate (gpm)
IW-22	Jan	7,058,099	661	21.7	178
	Feb	6,321,718	592	19.4	178
	Mar	7,221,924	676	22.2	178
	Apr	6,253,139	585	19.2	178
	May	7,542,884	706	23.1	178
	Jun	7,580,459	710	23.3	178
	Jul	7,982,633	747	24.5	178
	Aug	7,951,207	744	24.4	178
	Sep	7,031,468	658	21.6	178
	Oct	6,526,421	611	20.0	178
	Nov	5,928,704	555	18.2	178
	Dec	5,847,571	548	17.9	178

<b>IW-22 Total Gallons Pumped:</b>	<b>83,246,227</b>
<b>IW-22 Total Acre-Feet Pumped:</b>	<b>255</b>
<b>IW-22 Average Yield Rate (gpm):</b>	<b>178</b>
<b>IW-22 % Run Time:</b>	<b>89.0%</b>

Well	Month	Gallons Pumped	Estimated Hours	Yield (Acrefeet)	Approx. Yield Rate (gpm)
IW-11	Jan	670,232	47	2.1	239
	Feb	6,822,379	476	20.9	239
	Mar	9,542,379	665	29.3	239
	Apr	10,298,158	718	31.6	239
	May	4,283,597	299	13.1	239
	Jun	3,372,621	235	10.3	239
	Jul	9,703,685	677	29.8	239
	Aug	8,124,975	567	24.9	239
	Sep	7,391,992	515	22.7	239
	Oct	8,389,233	585	25.7	239
	Nov	7,862,510	548	24.1	239
	Dec	7,897,961	551	24.2	239

<b>IW-11 Total Gallons Pumped:</b>	<b>84,359,722</b>
<b>IW-11 Total Acre-Feet Pumped:</b>	<b>259</b>
<b>IW-11 Average Yield Rate (gpm):</b>	<b>239</b>
<b>IW-11 % Run Time:</b>	<b>67.2%</b>

Well	Month	Gallons Pumped	Estimated Hours	Yield (Acrefeet)	Approx. Yield Rate (gpm)
IW-6A	Jan	0	0	0.0	0
	Feb	0	0	0.0	0
	Mar	0	0	0.0	0
	Apr	0	0	0.0	0
	May	0	0	0.0	0
	Jun	0	0	0.0	0
	Jul	0	0	0.0	0
	Aug	0	0	0.0	0
	Sep	0	0	0.0	0
	Oct	0	0	0.0	0
	Nov	0	0	0.0	0
	Dec	0	0	0.0	0

<b>IW-6A Total Gallons Pumped:</b>	<b>0</b>
<b>IW-6A Total Acre-Feet Pumped:</b>	<b>0</b>
<b>IW-6A Average Yield Rate (gpm):</b>	<b>0</b>
<b>IW-6A % Run Time:</b>	<b>0.0%</b>

Well	Month	Gallons Pumped*	Estimated Hours	Yield (Acrefeet)	Approx. Yield Rate (gpm)
IW-12	Jan	3,271,499	665	10.0	82
	Feb	2,801,127	569	8.6	82
	Mar	3,352,135	681	10.3	82
	Apr	2,918,339	593	9.0	82
	May	2,877,936	585	8.8	82
	Jun	1,196,179	243	3.7	82
	Jul	0	0	0.0	0
	Aug	0	0	0.0	0
	Sep	0	0	0.0	0
	Oct	0	0	0.0	0
	Nov	0	0	0.0	0
	Dec	3,177,733	646	9.8	82

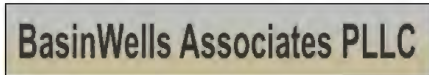
<b>IW-12 Total Gallons Pumped:</b>	<b>19,594,948</b>
<b>IW-12 Total Acre-Feet Pumped:</b>	<b>60</b>
<b>IW-12 Average Yield Rate (gpm):</b>	<b>82</b>
<b>IW-12 % Run Time:</b>	<b>45.5%</b>

Well	Month	Gallons Pumped	Estimated Hours	Yield (Acrefeet)	Approx. Yield Rate (gpm)
IW-13	Jan	0	0	0.0	0
	Feb	0	0	0.0	0
	Mar	0	0	0.0	0
	Apr	0	0	0.0	0
	May	0	0	0.0	0
	Jun	0	0	0.0	0
	Jul	0	0	0.0	0
	Aug	0	0	0.0	0
	Sep	0	0	0.0	0
	Oct	0	0	0.0	0
	Nov	0	0	0.0	0
	Dec	0	0	0.0	0

<b>IW-13 Total Gallons Pumped:</b>	<b>0</b>
<b>IW-13 Total Acre-Feet Pumped:</b>	<b>0</b>
<b>IW-13 Average Yield Rate (gpm):</b>	<b>0</b>
<b>IW-13 % Run Time:</b>	<b>0.0%</b>

Well	Month	Gallons Pumped	Estimated Hours	Yield (Acrefeet)	Approx. Yield Rate (gpm)
IW-14	Jan	1,000	0	0.0	60
	Feb	1,000	0	0.0	60
	Mar	0	0	0.0	0
	Apr	0	0	0.0	0
	May	0	0	0.0	0
	Jun	0	0	0.0	0
	Jul	0	0	0.0	0
	Aug	0	0	0.0	0
	Sep	0	0	0.0	0
	Oct	0	0	0.0	0
	Nov	0	0	0.0	0
	Dec	0	0	0.0	0

<b>IW-14 Total Gallons Pumped:</b>	<b>2,000</b>
<b>IW-14 Total Acre-Feet Pumped:</b>	<b>0</b>
<b>IW-14 Average Yield Rate (gpm):</b>	<b>60</b>
<b>IW-14 % Run Time:</b>	<b>0.0%</b>



**ATTACHMENT A.  
SUMMARY OF 2025 INTERCEPTOR WELL PERFORMANCE  
FREEPORT MCMORAN SIERRITA, INC.**

Well	Month	Gallons Pumped	Estimated Hours	Yield (Acrefeet)	Approx. Yield Rate (gpm)
IW-15	Jan	0	0	0.0	0
	Feb	0	0	0.0	0
	Mar	0	0	0.0	0
	Apr	0	0	0.0	0
	May	0	0	0.0	0
	Jun	0	0	0.0	0
	Jul	0	0	0.0	0
	Aug	0	0	0.0	0
	Sep	0	0	0.0	0
	Oct	0	0	0.0	0
	Nov	0	0	0.0	0
	Dec	0	0	0.0	0

<b>IW-15 Total Gallons Pumped:</b>	0
<b>IW-15 Total Acre-Feet Pumped:</b>	0
<b>IW-15 Average Yield Rate (gpm):</b>	0
<b>IW-15 % Run Time:</b>	0.0%

Well	Month	Gallons Pumped	Estimated Hours	Yield (Acrefeet)	Approx. Yield Rate (gpm)
IW-19	Jan	0	0	0.0	0
	Feb	0	0	0.0	0
	Mar	0	0	0.0	0
	Apr	0	0	0.0	0
	May	0	0	0.0	0
	Jun	0	0	0.0	0
	Jul	0	0	0.0	0
	Aug	0	0	0.0	0
	Sep	0	0	0.0	0
	Oct	0	0	0.0	0
	Nov	0	0	0.0	0
	Dec	0	0	0.0	0

<b>IW-19 Total Gallons Pumped:</b>	1,446,927
<b>IW-19 Total Acre-Feet Pumped:</b>	4
<b>IW-19 Average Yield Rate (gpm):</b>	112
<b>IW-19 % Run Time:</b>	2.5%

Well	Month	Gallons Pumped	Estimated Hours	Yield (Acrefeet)	Approx. Yield Rate (gpm)
IW-20	Jan	0	0	0.0	0
	Feb	0	0	0.0	0
	Mar	0	0	0.0	0
	Apr	0	0	0.0	0
	May	0	0	0.0	0
	Jun	0	0	0.0	0
	Jul	0	0	0.0	0
	Aug	0	0	0.0	0
	Sep	0	0	0.0	0
	Oct	0	0	0.0	0
	Nov	0	0	0.0	0
	Dec	0	0	0.0	0

<b>IW-20 Total Gallons Pumped:</b>	0
<b>IW-20 Total Acre-Feet Pumped:</b>	0
<b>IW-20 Average Yield Rate (gpm):</b>	0
<b>IW-20 % Run Time:</b>	0.0%

Well	Month	Gallons Pumped	Estimated Hours	Yield (Acrefeet)	Approx. Yield Rate (gpm)
IW-21	Jan	2,096,490	635	6.4	55
	Feb	1,865,264	565	5.7	55
	Mar	1,804,008	547	5.5	55
	Apr	0	0	0.0	0
	May	1,984,421	601	6.1	55
	Jun	2,008,691	609	6.2	55
	Jul	2,236,297	678	6.9	55
	Aug	2,250,313	682	6.9	55
	Sep	2,092,177	634	6.4	55
	Oct	2,205,961	668	6.8	55
	Nov	2,112,641	640	6.5	55
	Dec	1,850,346	561	5.7	55

<b>IW-21 Total Gallons Pumped:</b>	22,506,609
<b>IW-21 Total Acre-Feet Pumped:</b>	69
<b>IW-21 Average Yield Rate (gpm):</b>	55
<b>IW-21 % Run Time:</b>	77.9%

Well	Month	Gallons Pumped	Estimated Hours	Yield (Acrefeet)	Approx. Yield Rate (gpm)
IW-25	Jan	30,192,260	709	92.7	710
	Feb	26,707,269	627	82.0	710
	Mar	31,756,442	745	97.5	710
	Apr	26,216,316	615	80.4	710
	May	26,306,478	618	80.7	710
	Jun	27,248,313	640	83.6	710
	Jul	30,214,195	709	92.7	710
	Aug	29,247,921	687	89.8	710
	Sep	25,576,328	600	78.5	710
	Oct	28,870,790	678	88.6	710
	Nov	27,184,233	638	83.4	710
	Dec	26,875,187	631	82.5	710

<b>IW-25 Total Gallons Pumped:</b>	336,395,732
<b>IW-25 Total Acre-Feet Pumped:</b>	1032
<b>IW-25 Average Yield Rate (gpm):</b>	710
<b>IW-25 % Run Time:</b>	90.1%

Well	Month	Gallons Pumped	Estimated Hours	Yield (Acrefeet)	Approx. Yield Rate (gpm)
IW-26	Jan	10,022,009	702	30.8	238
	Feb	8,739,671	612	26.8	238
	Mar	10,152,747	711	31.2	238
	Apr	3,210,197	225	9.9	238
	May	0	0	0.0	0
	Jun	5,092,141	357	15.6	238
	Jul	10,420,933	730	32.0	238
	Aug	10,175,271	713	31.2	238
	Sep	9,238,024	647	28.3	238
	Oct	2,666,338	187	8.2	238
	Nov	3,324,696	233	10.2	238
	Dec	9,590,798	672	29.4	238

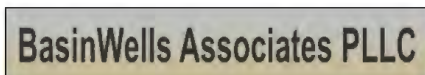
<b>IW-26 Total Gallons Pumped:</b>	82,632,825
<b>IW-26 Total Acre-Feet Pumped:</b>	254
<b>IW-26 Average Yield Rate (gpm):</b>	238
<b>IW-26 % Run Time:</b>	66.1%

Well	Month	Gallons Pumped	Estimated Hours	Yield (Acrefeet)	Approx. Yield Rate (gpm)
IW-27	Jan	4,560,421	400	14.0	190
	Feb	6,491,741	569	19.9	190
	Mar	8,460,675	742	26.0	190
	Apr	7,406,166	650	22.7	190
	May	7,616,270	668	23.4	190
	Jun	7,728,974	678	23.7	190
	Jul	8,275,986	726	25.4	190
	Aug	8,006,445	702	24.6	190
	Sep	6,215,134	545	19.1	190
	Oct	4,136,332	363	12.7	190
	Nov	0	0	0.0	0
	Dec	0	0	0.0	0

<b>IW-27 Total Gallons Pumped:</b>	68,898,144
<b>IW-27 Total Acre-Feet Pumped:</b>	211
<b>IW-27 Average Yield Rate (gpm):</b>	190
<b>IW-27 % Run Time:</b>	69.0%

Well	Month	Gallons Pumped	Estimated Hours	Yield (Acrefeet)	Approx. Yield Rate (gpm)
IW-28	Jan	12,077,451	706	37.1	285
	Feb	10,680,532	625	32.8	285
	Mar	12,730,093	744	39.1	285
	Apr	10,906,964	638	33.5	285
	May	11,118,217	650	34.1	285
	Jun	11,953,429	699	36.7	285
	Jul	12,450,100	728	38.2	285
	Aug	12,228,823	715	37.5	285
	Sep	11,286,002	660	34.6	285
	Oct	12,711,816	743	39.0	285
	Nov	10,164,728	594	31.2	285
	Dec	3,563,881	208	10.9	285

<b>IW-28 Total Gallons Pumped:</b>	131,872,036
<b>IW-28 Total Acre-Feet Pumped:</b>	405
<b>IW-28 Average Yield Rate (gpm):</b>	285
<b>IW-28 % Run Time:</b>	88.0%



**ATTACHMENT A.  
SUMMARY OF 2025 INTERCEPTOR WELL PERFORMANCE  
FREEPORT MCMORAN SIERRITA, INC.**

Well	Month	Gallons Pumped	Estimated Hours	Yield (Acrefeet)	Approx. Yield Rate (gpm)
IW-29	Jan	16,225,573	584	49.8	463
	Feb	13,988,899	504	42.9	463
	Mar	16,716,835	602	51.3	463
	Apr	14,487,299	522	44.5	463
	May	16,091,851	579	49.4	463
	Jun	16,449,141	592	50.5	463
	Jul	155,994	6	0.5	463
	Aug	0	0	0.0	0
	Sep	0	0	0.0	0
	Oct	378,247	14	1.2	463
	Nov	19,687,598	709	60.4	463
	Dec	20,560,156	740	63.1	463

<b>IW-29 Total Gallons Pumped:</b>	<b>134,741,593</b>
<b>IW-29 Total Acre-Feet Pumped:</b>	<b>413</b>
<b>IW-29 Average Yield Rate (gpm):</b>	<b>463</b>
<b>IW-29 % Run Time:</b>	<b>55.4%</b>

Well	Month	Gallons Pumped	Estimated Hours	Yield (Acrefeet)	Approx. Yield Rate (gpm)
PS-1	Jan	39,827,353	738	122.2	900
	Feb	36,283,796	672	111.3	900
	Mar	40,013,253	741	122.8	900
	Apr	34,795,585	644	106.8	900
	May	39,542,340	732	121.3	900
	Jun	36,445,713	675	111.8	900
	Jul	39,491,691	731	121.2	900
	Aug	39,371,635	729	120.8	900
	Sep	37,779,448	700	115.9	900
	Oct	13,781,930	255	42.3	900
	Nov	31,944,094	592	98.0	900
	Dec	37,383,984	692	114.7	900

<b>PS-1 Total Gallons Pumped:</b>	<b>426,660,822</b>
<b>PS-1 Total Acre-Feet Pumped:</b>	<b>1309</b>
<b>PS-1 Average Yield Rate (gpm):</b>	<b>900</b>
<b>PS-1 % Run Time:</b>	<b>90.2%</b>

Well	Month	Gallons Pumped	Estimated Hours	Yield (Acrefeet)	Approx. Yield Rate (gpm)
PS-2	Jan	35,463,347	649	108.8	911
	Feb	32,377,872	592	99.4	911
	Mar	35,683,961	653	109.5	911
	Apr	17,652,848	323	54.2	911
	May	24,416,556	447	74.9	911
	Jun	29,175,743	534	89.5	911
	Jul	39,246,288	718	120.4	911
	Aug	34,627,090	633	106.3	911
	Sep	32,331,386	591	99.2	911
	Oct	40,309,723	737	123.7	911
	Nov	37,209,648	681	114.2	911
	Dec	40,308,282	737	123.7	911

<b>PS-2 Total Gallons Pumped:</b>	<b>398,802,744</b>
<b>PS-2 Total Acre-Feet Pumped:</b>	<b>1224</b>
<b>PS-2 Average Yield Rate (gpm):</b>	<b>911</b>
<b>PS-2 % Run Time:</b>	<b>83.3%</b>

Well	Month	Gallons Pumped	Estimated Hours	Yield (Acrefeet)	Approx. Yield Rate (gpm)
PS-3	Jan	40,584,999	741	124.5	913
	Feb	36,772,010	671	112.8	913
	Mar	40,621,907	742	124.7	913
	Apr	35,826,118	654	109.9	913
	May	40,278,641	735	123.6	913
	Jun	37,446,271	684	114.9	913
	Jul	40,742,387	744	125.0	913
	Aug	40,545,594	740	124.4	913
	Sep	35,578,729	649	109.2	913
	Oct	40,895,267	747	125.5	913
	Nov	37,628,320	687	115.5	913
	Dec	18,311,019	334	56.2	913

<b>PS-3 Total Gallons Pumped:</b>	<b>445,231,262</b>
<b>PS-3 Total Acre-Feet Pumped:</b>	<b>1366</b>
<b>PS-3 Average Yield Rate (gpm):</b>	<b>913</b>
<b>PS-3 % Run Time:</b>	<b>92.8%</b>

Well	Month	Gallons Pumped	Estimated Hours	Yield (Acrefeet)	Approx. Yield Rate (gpm)
PS-4	Jan	47,578,742	738	146.0	1075
	Feb	43,219,775	670	132.6	1075
	Mar	47,754,824	740	146.5	1075
	Apr	41,126,756	638	126.2	1075
	May	46,207,046	716	141.8	1075
	Jun	43,235,725	670	132.7	1075
	Jul	47,289,838	733	145.1	1075
	Aug	47,206,072	732	144.9	1075
	Sep	45,120,488	700	138.5	1075
	Oct	47,501,699	736	145.8	1075
	Nov	45,574,709	707	139.9	1075
	Dec	46,936,396	728	144.0	1075

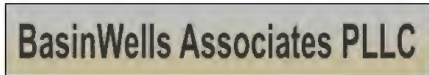
<b>PS-4 Total Gallons Pumped:</b>	<b>548,752,070</b>
<b>PS-4 Total Acre-Feet Pumped:</b>	<b>1684</b>
<b>PS-4 Average Yield Rate (gpm):</b>	<b>1075</b>
<b>PS-4 % Run Time:</b>	<b>97.1%</b>

Well	Month	Gallons Pumped	Estimated Hours	Yield (Acrefeet)	Approx. Yield Rate (gpm)
MC-1	Jan	35,186,579	727	108.0	807
	Feb	32,236,517	666	98.9	807
	Mar	35,596,984	735	109.2	807
	Apr	30,814,030	636	94.6	807
	May	28,404,974	587	87.2	807
	Jun	28,796,631	595	88.4	807
	Jul	31,196,664	644	95.7	807
	Aug	29,216,942	603	89.7	807
	Sep	25,570,889	528	78.5	807
	Oct	34,070,598	704	104.6	807
	Nov	30,787,838	636	94.5	807
	Dec	29,106,950	601	89.3	807

<b>MC-1 Total Gallons Pumped:</b>	<b>370,985,596</b>
<b>MC-1 Total Acre-Feet Pumped:</b>	<b>1138</b>
<b>MC-1 Average Yield Rate (gpm):</b>	<b>807</b>
<b>MC-1 % Run Time:</b>	<b>87.5%</b>

Well	Month	Gallons Pumped	Estimated Hours	Yield (Acrefeet)	Approx. Yield Rate (gpm)
MC-2	Jan	32,386,147	698	99.4	773
	Feb	30,958,322	667	95.0	773
	Mar	34,190,696	737	104.9	773
	Apr	29,954,770	646	91.9	773
	May	24,924,175	537	76.5	773
	Jun	5,466,224	118	16.8	773
	Jul	27,575,206	595	84.6	773
	Aug	26,538,943	572	81.4	773
	Sep	23,495,664	507	72.1	773
	Oct	32,990,441	711	101.2	773
	Nov	26,147,219	564	80.2	773
	Dec	27,910,450	602	85.6	773

<b>MC-2 Total Gallons Pumped:</b>	<b>322,538,257</b>
<b>MC-2 Total Acre-Feet Pumped:</b>	<b>990</b>
<b>MC-2 Average Yield Rate (gpm):</b>	<b>773</b>
<b>MC-2 % Run Time:</b>	<b>79.4%</b>



**ATTACHMENT A.  
SUMMARY OF 2025 INTERCEPTOR WELL PERFORMANCE  
FREEPORT MCMORAN SIERRITA, INC.**

Well	Month	Gallons Pumped	Estimated Hours	Yield (Acrefeet)	Approx. Yield Rate (gpm)
MC-3	Jan	19,422,850	721	59.6	449
	Feb	17,791,268	660	54.6	449
	Mar	19,705,916	731	60.5	449
	Apr	17,562,051	652	53.0	449
	May	16,269,420	604	49.9	449
	Jun	16,532,877	614	50.7	449
	Jul	17,378,440	653	53.9	449
	Aug	15,635,084	580	48.0	449
	Sep	13,829,274	513	42.4	449
	Oct	18,373,521	680	57.0	449
	Nov	16,287,696	605	50.0	449
	Dec	15,621,385	580	47.9	449

<b>MC-3 Total Gallons Pumped:</b>	<b>204,810,882</b>
<b>MC-3 Total Acre-Feet Pumped:</b>	<b>628</b>
<b>MC-3 Average Yield Rate (gpm):</b>	<b>449</b>
<b>MC-3 % Run Time:</b>	<b>86.8%</b>

Well	Month	Gallons Pumped	Estimated Hours	Yield (Acrefeet)	Approx. Yield Rate (gpm)
MC-4	Jan	16,832,677	731	51.7	384
	Feb	15,535,404	674	47.7	384
	Mar	17,124,247	743	52.5	384
	Apr	14,602,427	638	45.1	384
	May	15,032,839	652	46.1	384
	Jun	15,206,167	660	46.7	384
	Jul	16,223,310	704	49.8	384
	Aug	15,790,911	685	48.5	384
	Sep	14,541,909	631	44.6	384
	Oct	16,728,926	726	51.3	384
	Nov	15,309,758	664	47.0	384
	Dec	15,131,042	657	46.4	384

<b>MC-4 Total Gallons Pumped:</b>	<b>188,349,617</b>
<b>MC-4 Total Acre-Feet Pumped:</b>	<b>577</b>
<b>MC-4 Average Yield Rate (gpm):</b>	<b>384</b>
<b>MC-4 % Run Time:</b>	<b>93.2%</b>

Well	Month	Gallons Pumped	Estimated Hours	Yield (Acrefeet)	Approx. Yield Rate (gpm)
FFS-1	Jan	28,590,694	741	87.7	643
	Feb	25,938,874	672	79.6	643
	Mar	25,411,529	659	76.0	643
	Apr	24,541,563	636	75.3	643
	May	27,796,654	720	85.3	643
	Jun	26,148,478	678	80.2	643
	Jul	28,584,200	741	87.7	643
	Aug	28,548,841	740	87.6	643
	Sep	26,154,314	678	80.3	643
	Oct	28,418,592	737	87.2	643
	Nov	26,994,473	700	82.8	643
	Dec	28,221,433	732	86.6	643

<b>FFS-1 Total Gallons Pumped:</b>	<b>325,347,695</b>
<b>FFS-1 Total Acre-Feet Pumped:</b>	<b>998</b>
<b>FFS-1 Average Yield Rate (gpm):</b>	<b>643</b>
<b>FFS-1 % Run Time:</b>	<b>96.3%</b>

Well	Month	Gallons Pumped	Estimated Hours	Yield (Acrefeet)	Approx. Yield Rate (gpm)
FFS-2	Jan	45,837,877	676	140.7	1130
	Feb	45,470,284	671	139.5	1130
	Mar	40,405,986	596	124.0	1130
	Apr	14,913,371	220	45.8	1130
	May	27,467,165	405	84.3	1130
	Jun	29,886,219	441	91.7	1130
	Jul	36,855,561	544	113.1	1130
	Aug	35,072,015	517	107.6	1130
	Sep	31,912,295	471	97.9	1130
	Oct	33,489,938	494	102.8	1130
	Nov	37,982,214	560	116.6	1130
	Dec	40,596,549	599	124.6	1130

<b>FFS-2 Total Gallons Pumped:</b>	<b>419,889,474</b>
<b>FFS-2 Total Acre-Feet Pumped:</b>	<b>1288</b>
<b>FFS-2 Average Yield Rate (gpm):</b>	<b>1130</b>
<b>FFS-2 % Run Time:</b>	<b>70.7%</b>

Well	Month	Gallons Pumped	Estimated Hours	Yield (Acrefeet)	Approx. Yield Rate (gpm)
FFS-3	Jan	3,552,810	740	10.0	80
	Feb	3,217,776	670	9.9	80
	Mar	3,443,811	717	10.6	80
	Apr	2,963,552	617	9.1	80
	May	3,395,814	707	10.4	80
	Jun	3,153,477	657	9.7	80
	Jul	3,295,936	687	10.1	80
	Aug	3,112,512	648	9.6	80
	Sep	2,025,502	630	9.3	80
	Oct	2,845,856	593	8.7	80
	Nov	2,839,532	592	8.7	80
	Dec	3,083,340	642	9.5	80

<b>FFS-3 Total Gallons Pumped:</b>	<b>37,929,927</b>
<b>FFS-3 Total Acre-Feet Pumped:</b>	<b>116</b>
<b>FFS-3 Average Yield Rate (gpm):</b>	<b>80</b>
<b>FFS-3 % Run Time:</b>	<b>90.2%</b>

Well	Month	Gallons Pumped	Estimated Hours	Yield (Acrefeet)	Approx. Yield Rate (gpm)
FFS-4	Jan	2,063,740	744	6.2	46
	Feb	1,859,913	670	5.7	46
	Mar	2,039,585	735	6.3	46
	Apr	1,740,407	627	5.3	46
	May	1,473,138	531	4.5	46
	Jun	0	0	0.0	0
	Jul	536,771	193	1.6	46
	Aug	1,899,490	685	5.8	46
	Sep	1,787,688	644	5.5	46
	Oct	1,823,236	657	5.6	46
	Nov	1,763,027	635	5.4	46
	Dec	1,831,353	660	5.6	46

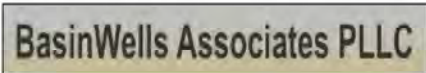
<b>FFS-4 Total Gallons Pumped:</b>	<b>18,818,363</b>
<b>FFS-4 Total Acre-Feet Pumped:</b>	<b>58</b>
<b>FFS-4 Average Yield Rate (gpm):</b>	<b>46</b>
<b>FFS-4 % Run Time:</b>	<b>77.4%</b>

Well	Month	Gallons Pumped	Estimated Hours	Yield (Acrefeet)	Approx. Yield Rate (gpm)
FFS-5	Jan	25,308,000	741	77.7	569
	Feb	22,914,000	671	70.5	569
	Mar	24,795,000	726	76.1	569
	Apr	21,577,777	632	66.2	569
	May	19,178,849	562	58.9	569
	Jun	21,043,627	616	64.6	569
	Jul	21,987,157	644	67.5	569
	Aug	20,395,726	597	62.6	569
	Sep	18,054,804	529	55.4	569
	Oct	23,494,827	688	72.1	569
	Nov	20,504,648	601	62.9	569
	Dec	18,005,676	527	55.8	569

<b>FFS-5 Total Gallons Pumped:</b>	<b>257,260,091</b>
<b>FFS-5 Total Acre-Feet Pumped:</b>	<b>788</b>
<b>FFS-5 Average Yield Rate (gpm):</b>	<b>569</b>
<b>FFS-5 % Run Time:</b>	<b>86.0%</b>

Well	Month	Gallons Pumped	Estimated Hours	Yield (Acrefeet)	Approx. Yield Rate (gpm)
FFS-6	Jan	5,394,155	719	16.6	125
	Feb	4,879,365	651	15.0	125
	Mar	5,337,191	712	16.4	125
	Apr	4,573,773	610	14.0	125
	May	2,909,231	388	8.9	125
	Jun	0	0	0.0	0
	Jul	2,411,225	321	7.4	125
	Aug	3,788,352	505	11.6	125
	Sep	4,165,523	555	12.8	125
	Oct	5,460,071	728	16.8	125
	Nov	4,823,236	643	14.8	125
	Dec	4,538,246	602	13.9	125

<b>FFS-6 Total Gallons Pumped:</b>	<b>48,280,869</b>
<b>FFS-6 Total Acre-Feet Pumped:</b>	<b>148</b>
<b>FFS-6 Average Yield Rate (gpm):</b>	<b>125</b>
<b>FFS-6 % Run Time:</b>	<b>73.4%</b>

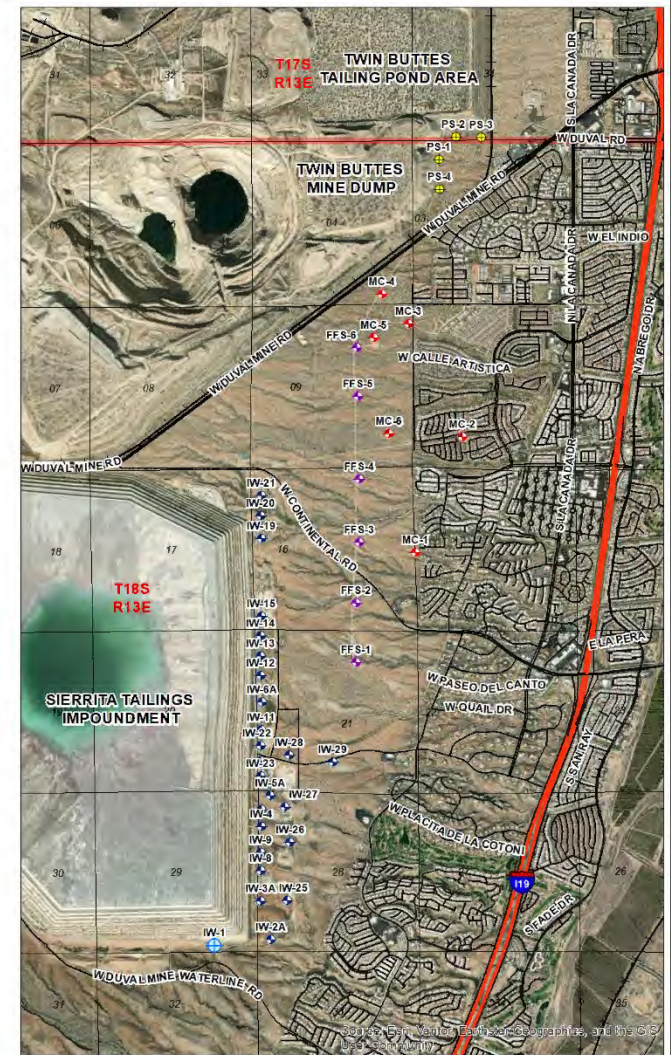
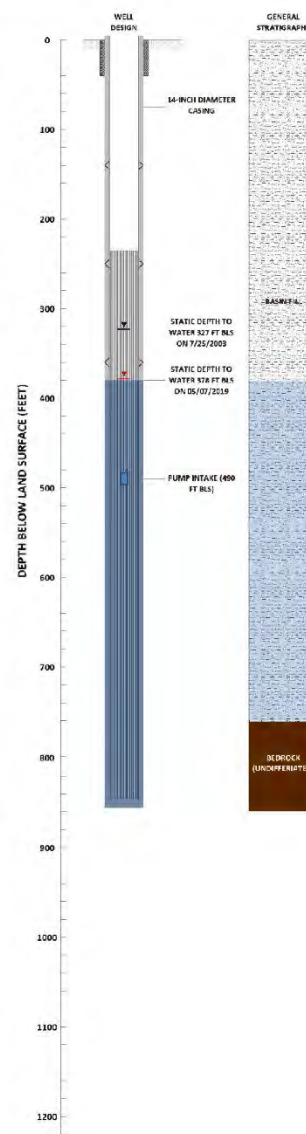
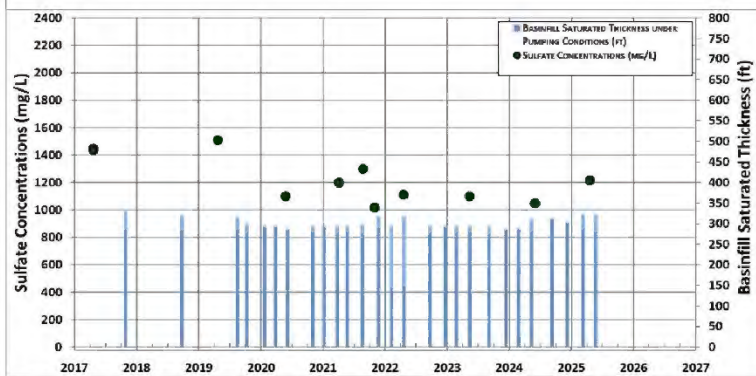
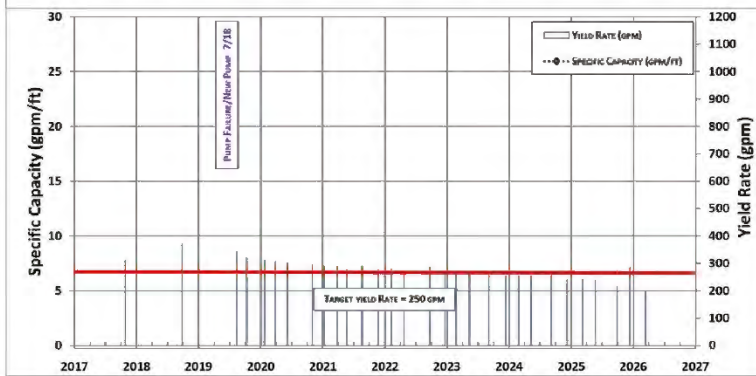
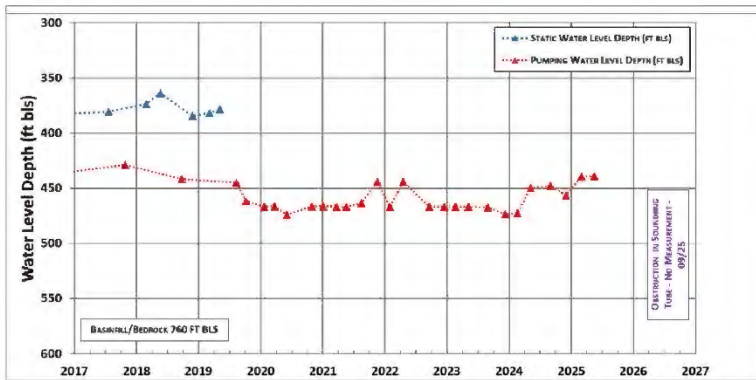


ATTACHMENT B

---

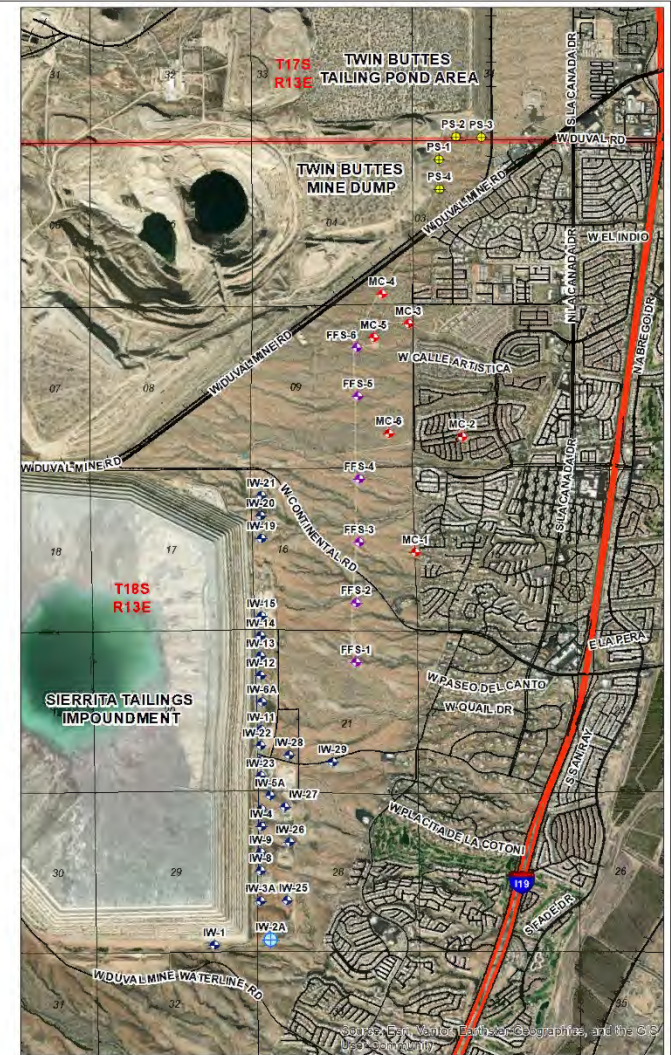
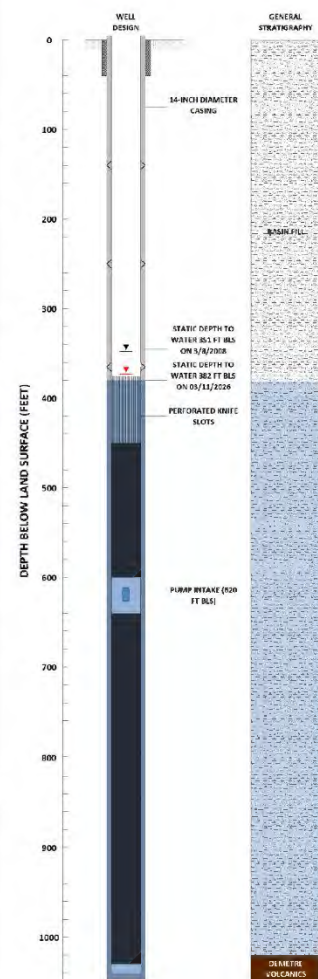
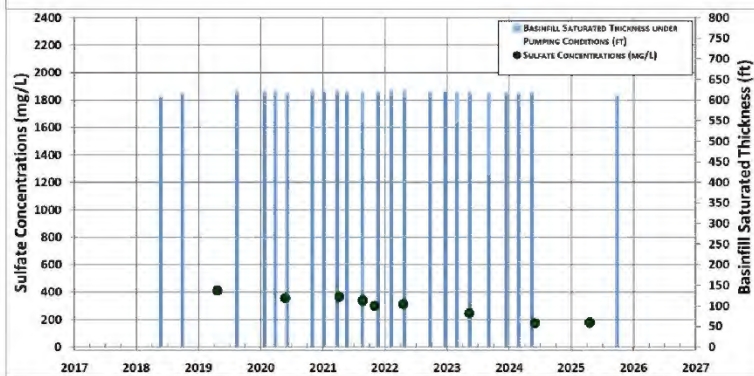
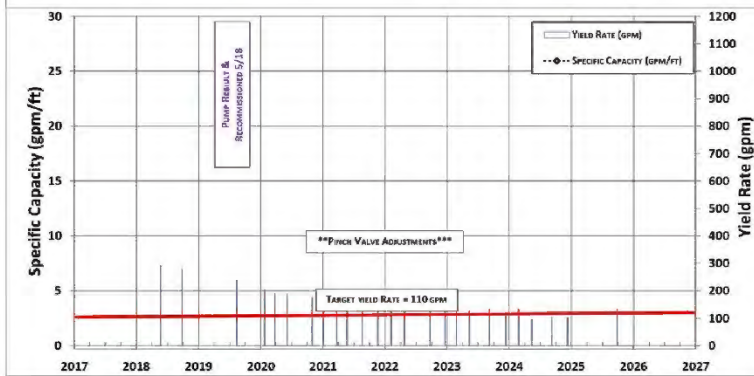
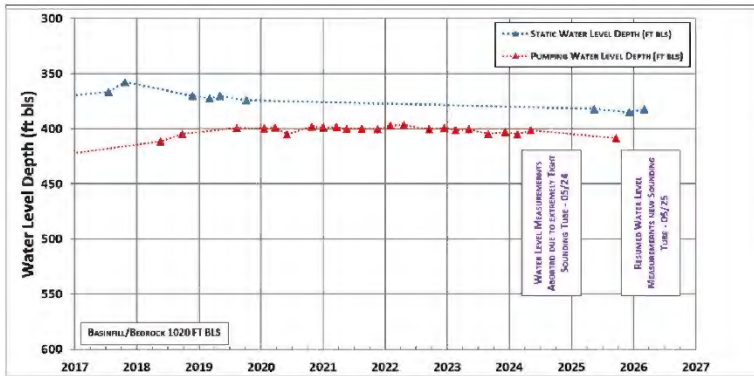
**SIERRITA SULFATE MITIGATION ACTION WELL FIELD WELL FIELD DATA PLOTS**

**BasinWells Associates PLLC**



<p><b>BasinWells</b> ASSOCIATES PLLC SPECIALISTS IN GROUNDWATER DEVELOPMENT</p>	<p><b>FREEPORT-McMORAN</b> COPPER &amp; GOLD</p>	<p>IW-1: WATER LEVELS, YIELD, SPECIFIC CAPACITY, BASINFILL SAT. THK. AND SULFATE</p>
	<p><b>VERSION DATE:</b> MARCH, 2026</p>	<p>CADASTRAL: D-18-13 29DCD ADWR REG. NO.: 55-623129 DRILL YEAR: 1978</p>

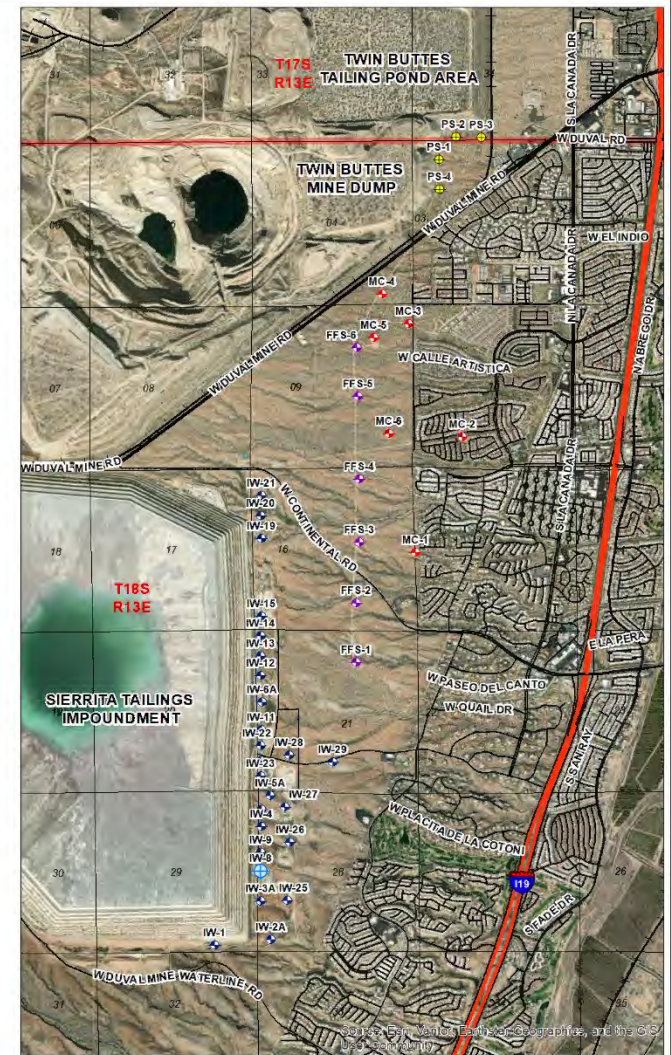
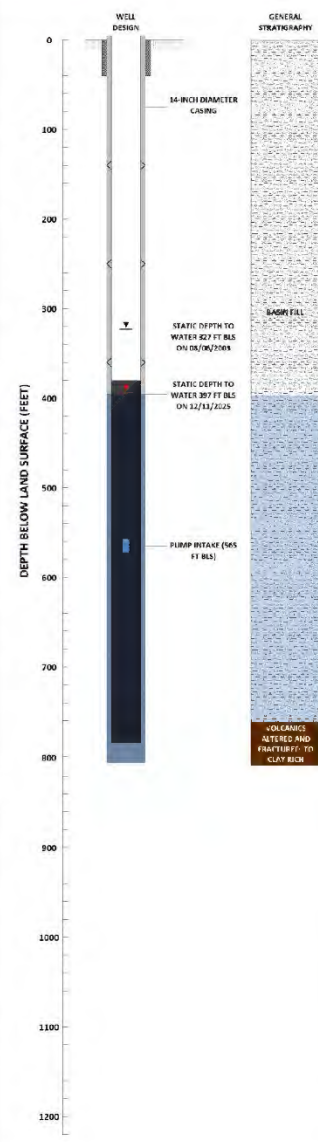
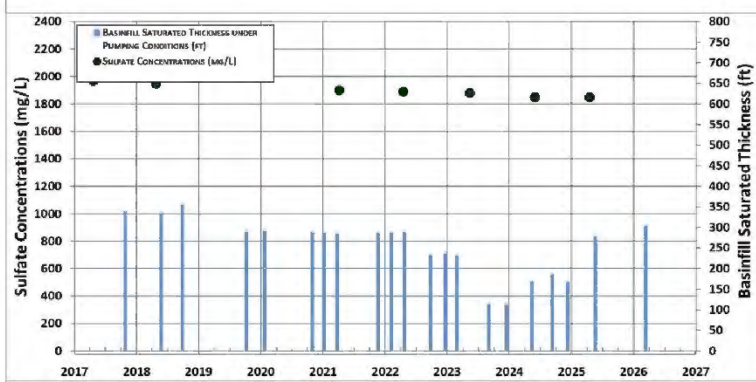
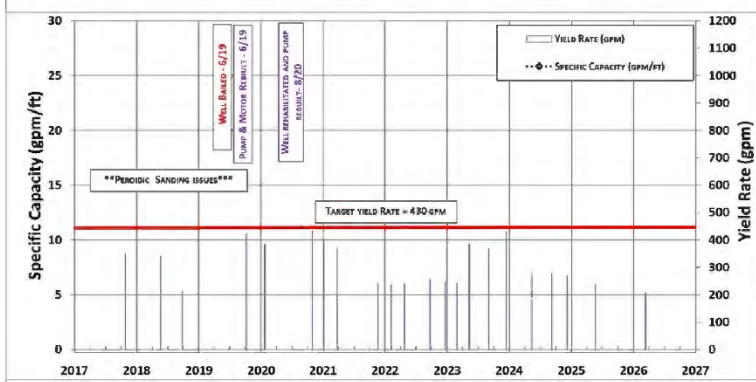
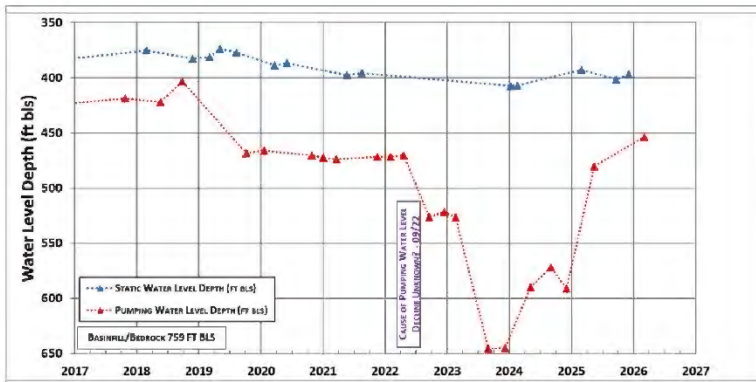
**BasinWells Associates PLLC**



<p>BasinWells ASSOCIATES PLLC SPECIALISTS IN GROUNDWATER DEVELOPMENT</p>	<p>FREEPORT-MCMORAN COPPER &amp; GOLD</p>	<p>IW-2A: WATER LEVELS, YIELD, SPECIFIC CAPACITY, BASINFILL SAT. THK. AND SULFATE</p>
	<p>VERSION DATE: MARCH, 2026</p>	<p>CADASTRAL: D-18-13 28CCC ADWR REG. NO.: 55-216464 DRILL YEAR: 2008</p>

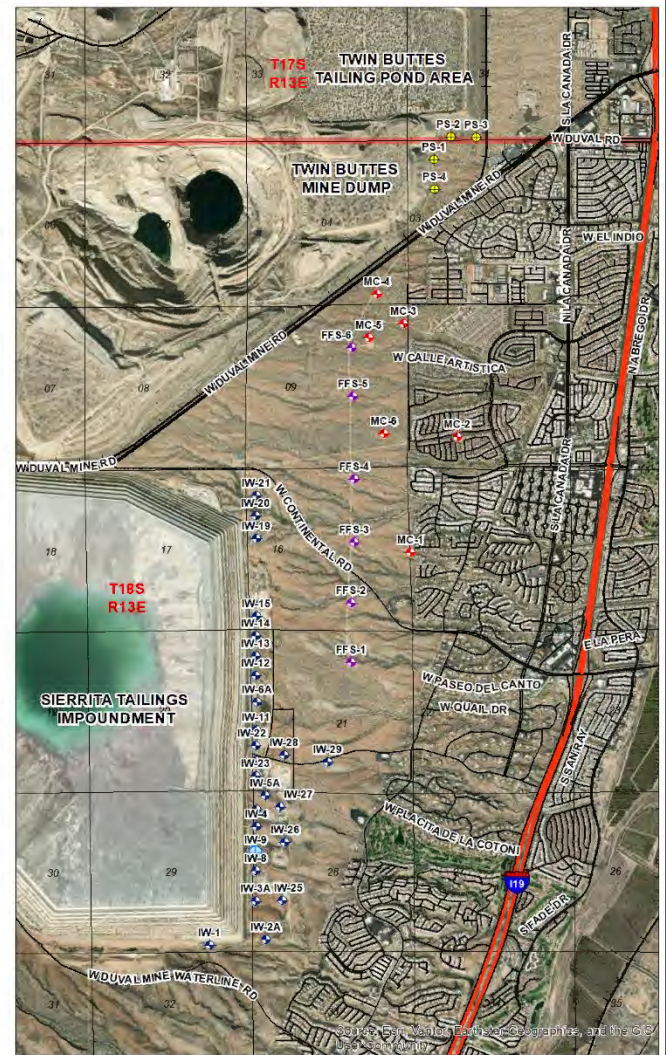
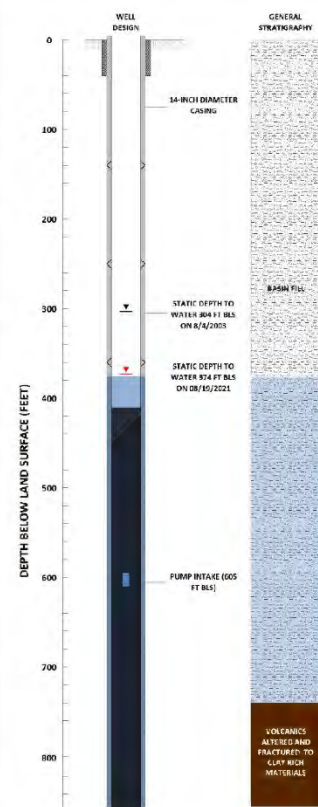
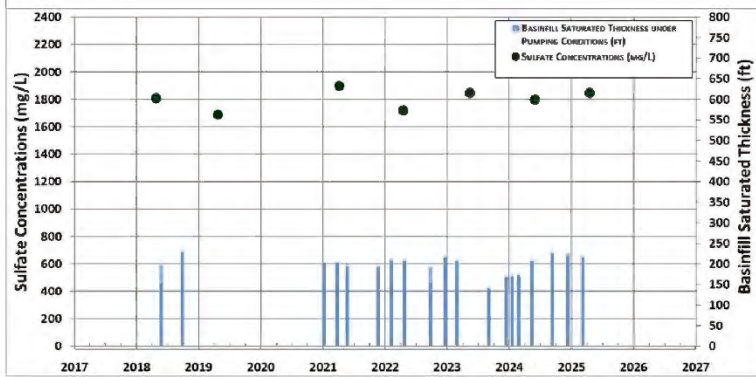
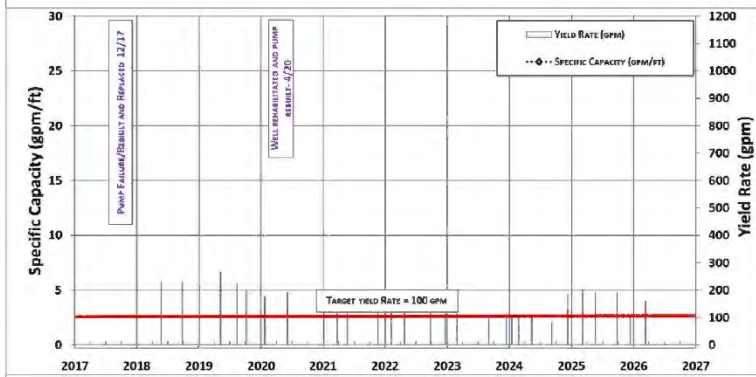
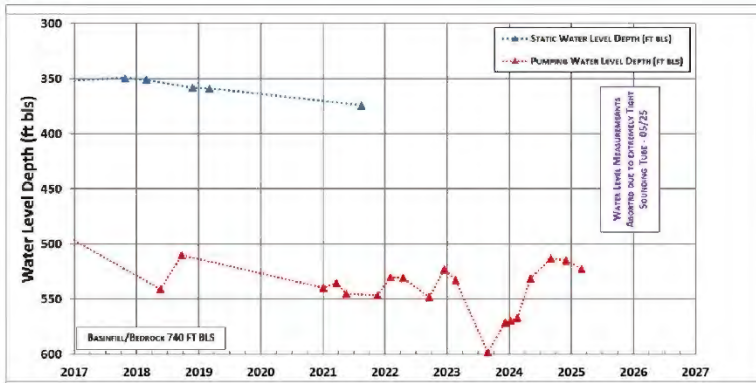
**BasinWells Associates PLLC**





<p>BasinWells ASSOCIATES PLLC SPECIALISTS IN GROUNDWATER DEVELOPMENT</p>	<p>FREEPORT-MCMORAN COPPER &amp; GOLD</p>	<p>IW-8: WATER LEVELS, YIELD, SPECIFIC CAPACITY, BASINFILL SAT. THK. AND SULFATE</p>
	<p>VERSION DATE: MARCH, 2026</p>	<p>CADASTRAL: D-18-13 28BCC ADWR REG. NO.: 55-508236 DRILL YEAR: 1984</p>

**BasinWells Associates PLLC**



<p>BasinWells ASSOCIATES PLLC SPECIALISTS IN GROUNDWATER DEVELOPMENT</p>	<p>FREEPORT-McMORAN COPPER &amp; GOLD</p>	<p>IW-9: WATER LEVELS, YIELD, SPECIFIC CAPACITY, BASINFILL SAT. THK. AND SULFATE</p>
	<p>VERSION DATE: MARCH, 2026</p>	<p>CADASTRAL: D-18-13 28BCC ADWR REG. NO.: 55-508238 DRILL YEAR: 1984</p>

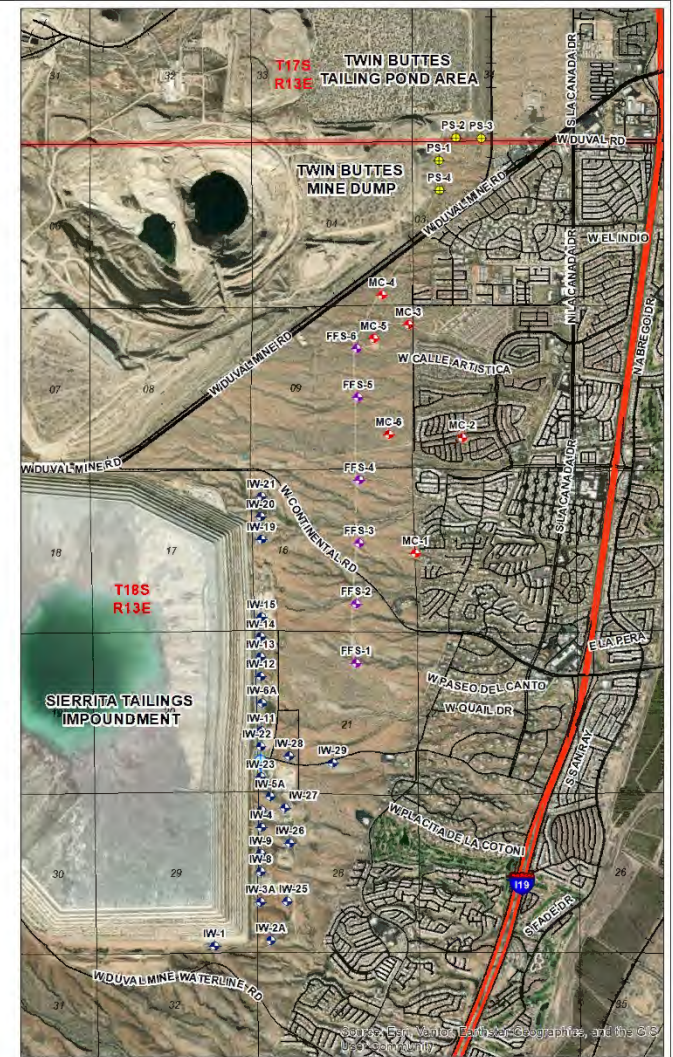
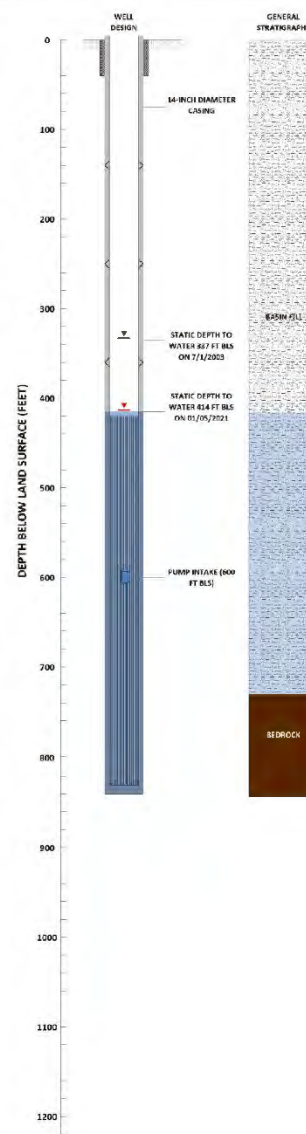
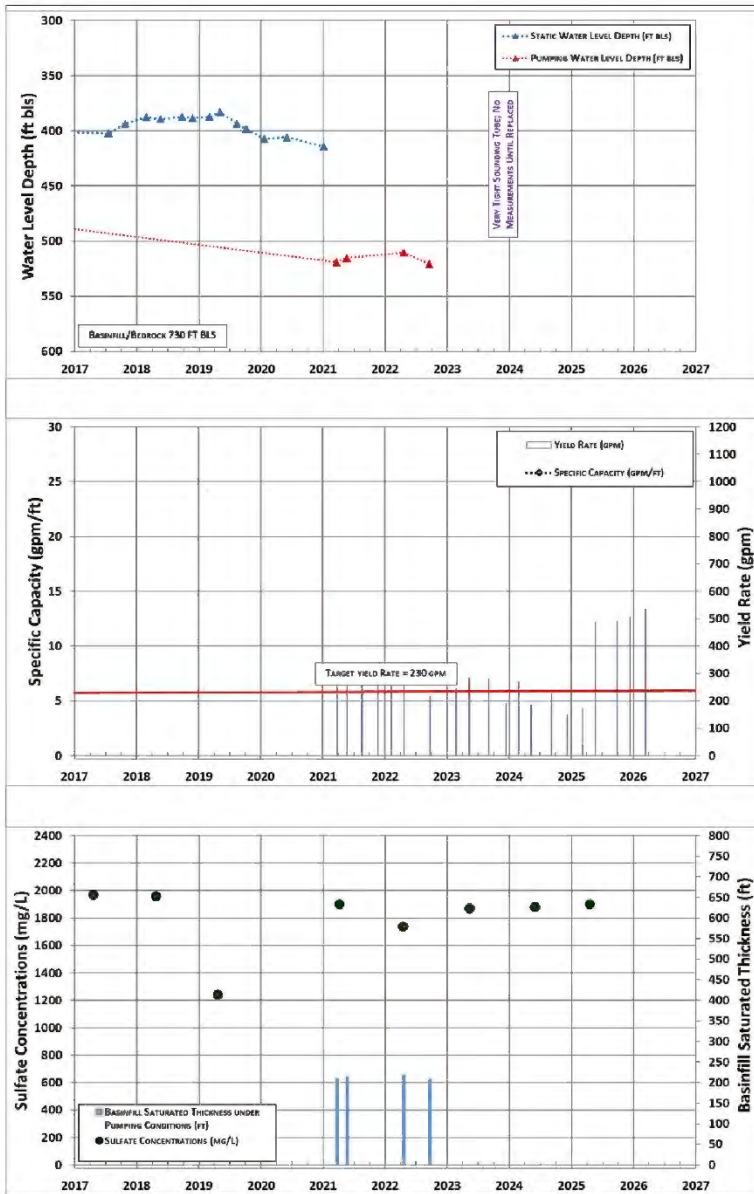
**BasinWells Associates PLLC**





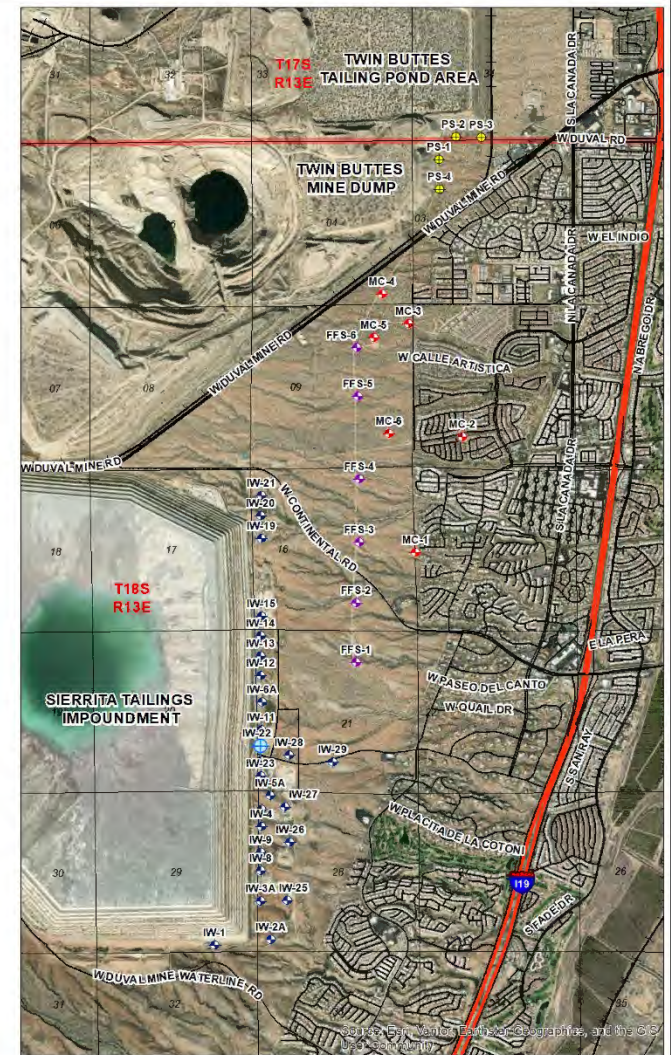
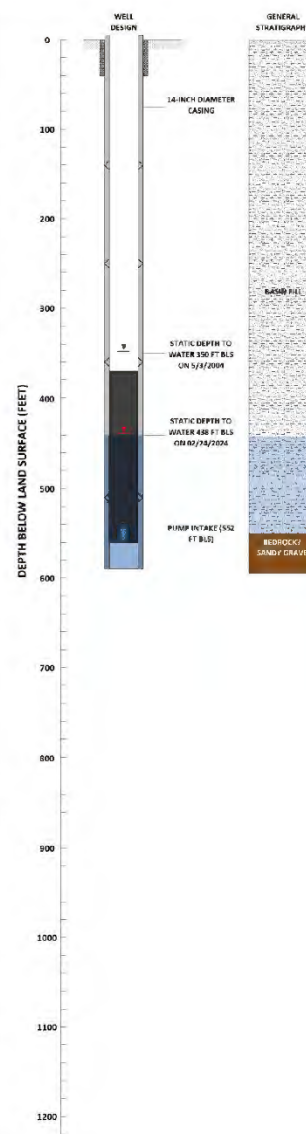
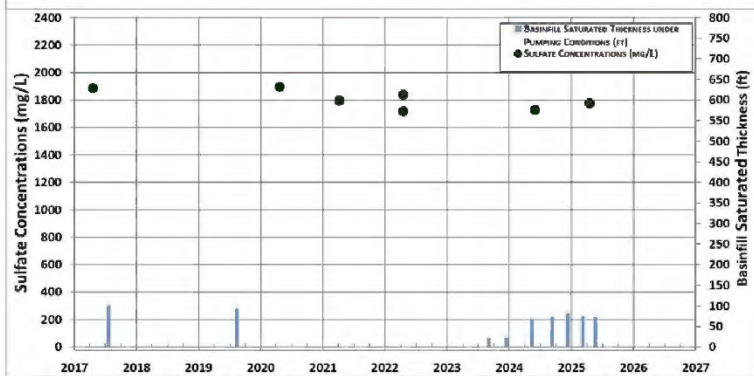
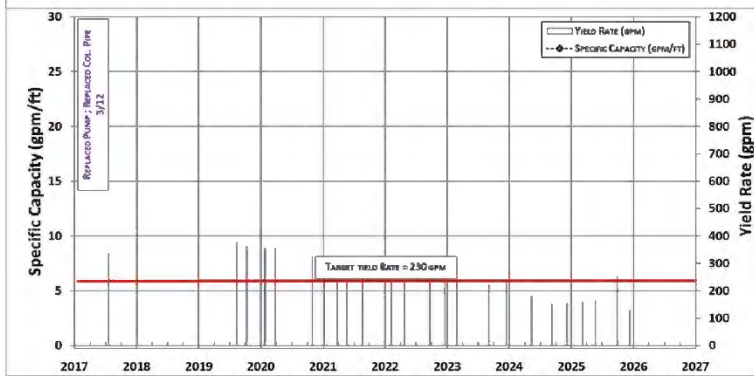
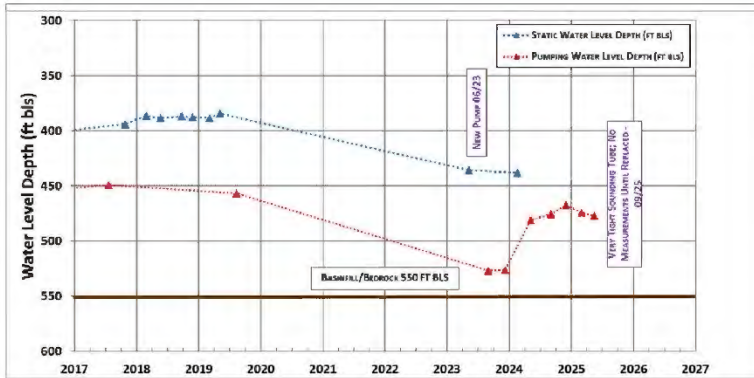






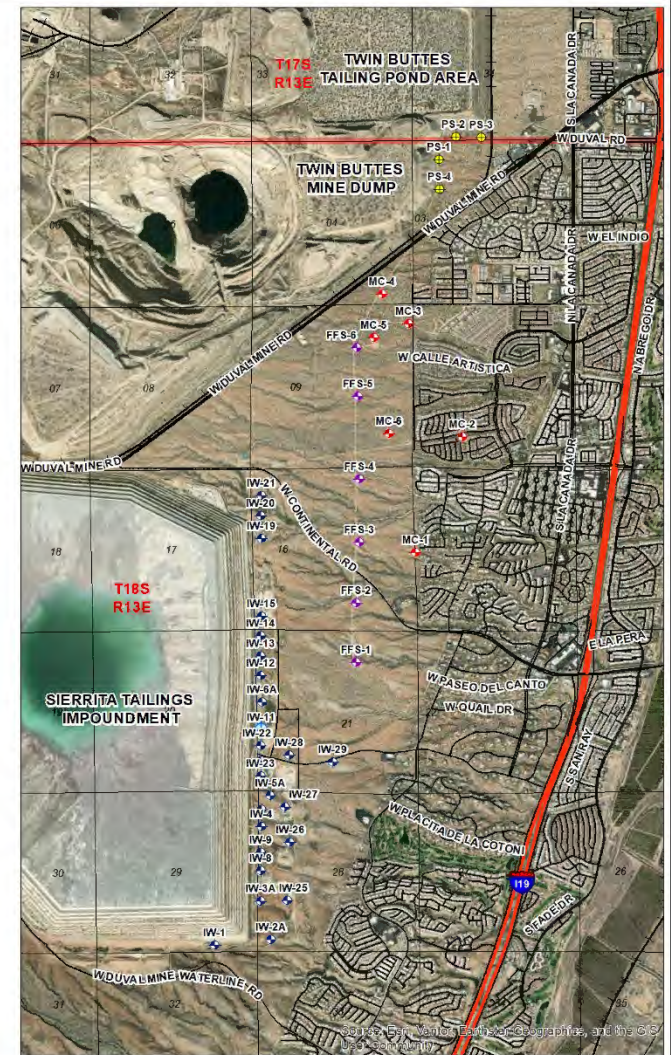
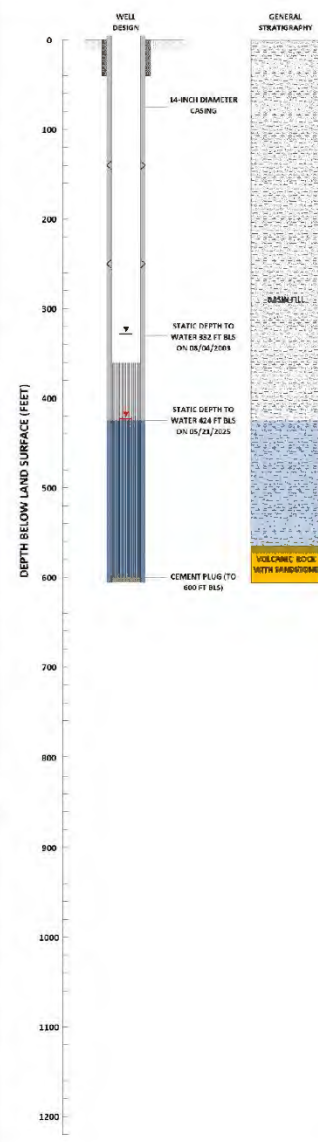
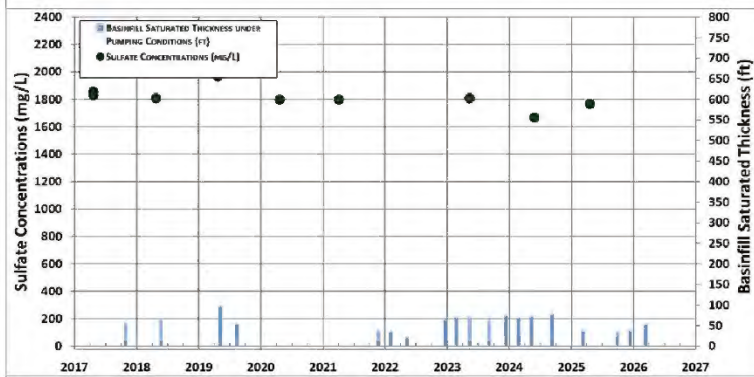
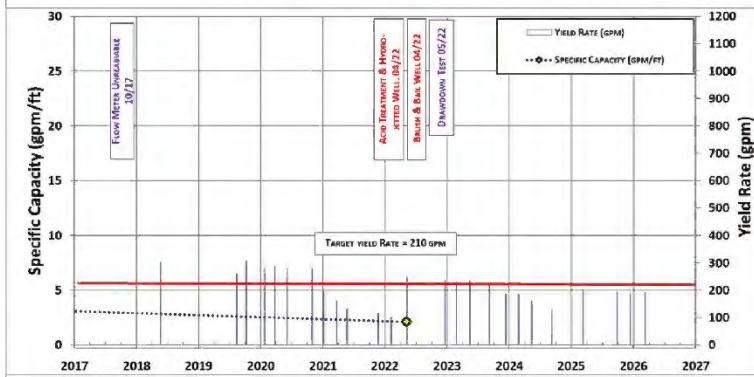
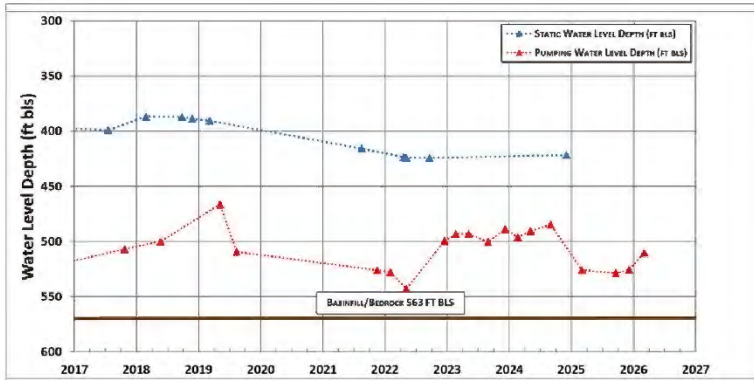
<p><b>BasinWells</b> ASSOCIATES PLLC SPECIALISTS IN GROUNDWATER DEVELOPMENT</p>	<p><b>FREEPORT-McMORAN</b> COPPER &amp; GOLD</p>	IW-10: WATER LEVELS, YIELD, SPECIFIC CAPACITY, BASINFILL SAT. THK. AND SULFATE
	<p><b>VERSION DATE:</b> MARCH, 2026</p>	<p>CADASTRAL: D-18-13 21CBC ADWR REG. NO.: 55-508237 DRILL YEAR: 1984</p>

**BasinWells Associates PLLC**



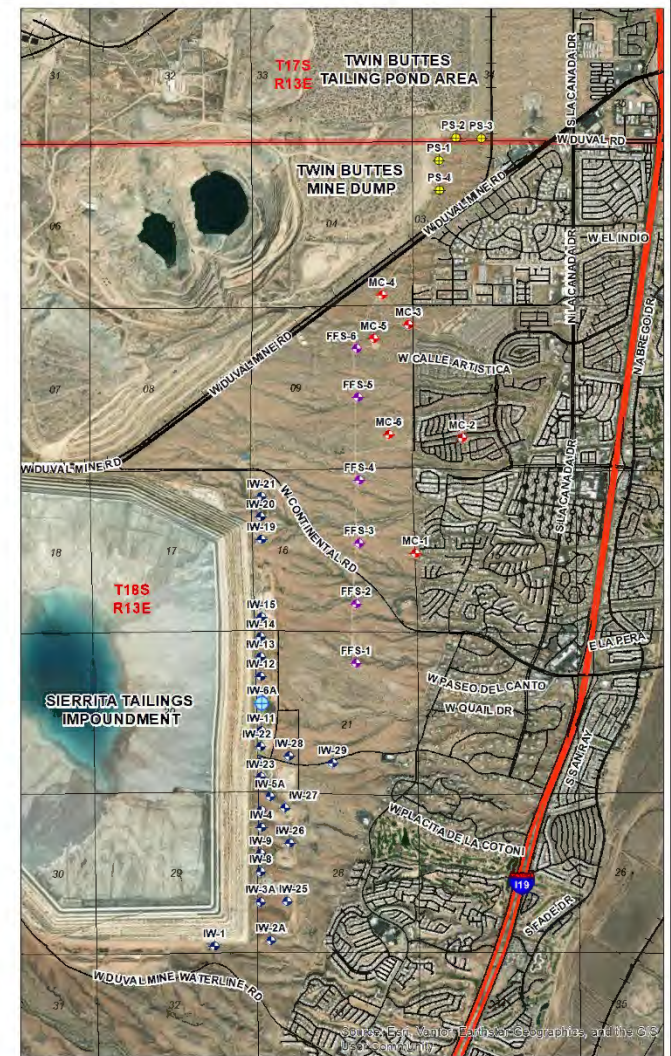
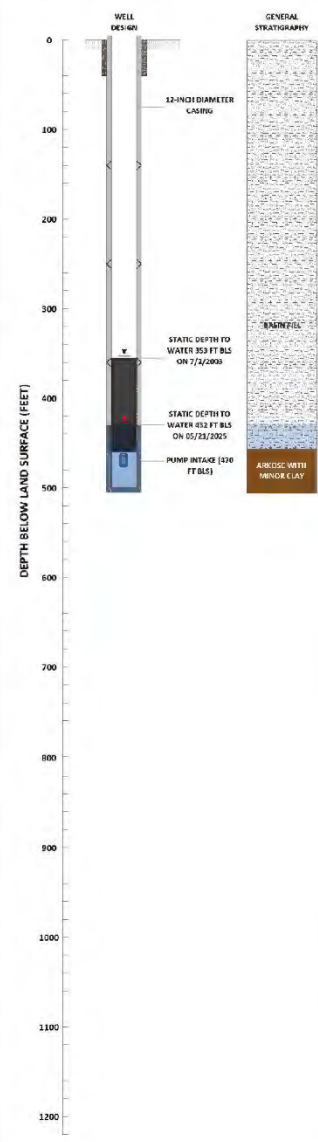
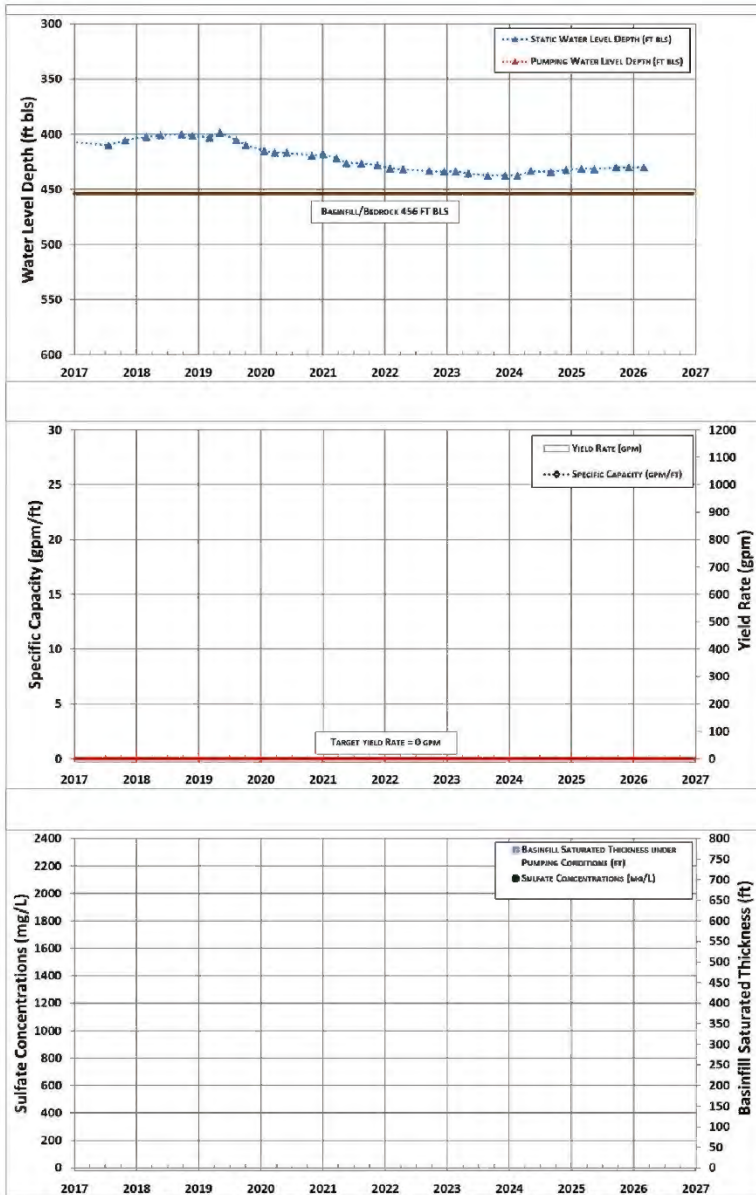
<p>BasinWells ASSOCIATES PLLC SPECIALISTS IN GROUNDWATER DEVELOPMENT</p>	<p>FREEPORT-MCMORAN COPPER &amp; GOLD</p>	<p>IW-22: WATER LEVELS, YIELD, SPECIFIC CAPACITY, BASINFILL SAT. THK. AND SULFATE</p>
	<p>VERSION DATE: MARCH, 2026</p>	<p>CADASTRAL: D-18-13 21CBC ADWR REG. NO.: 55-200554 DRILL YEAR: 2004</p>

**BasinWells Associates PLLC**



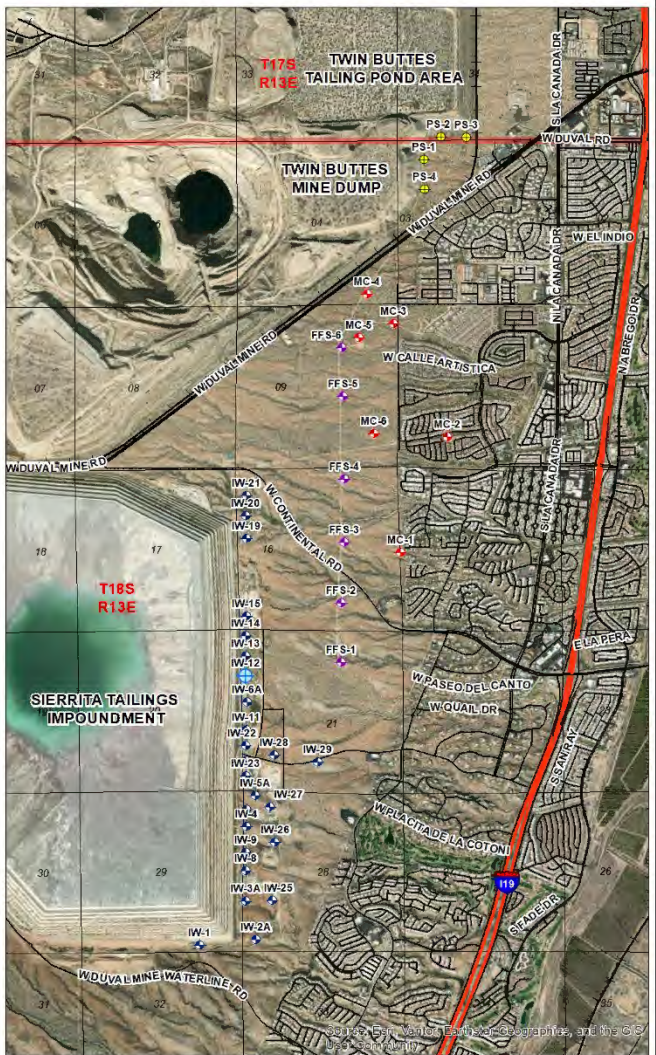
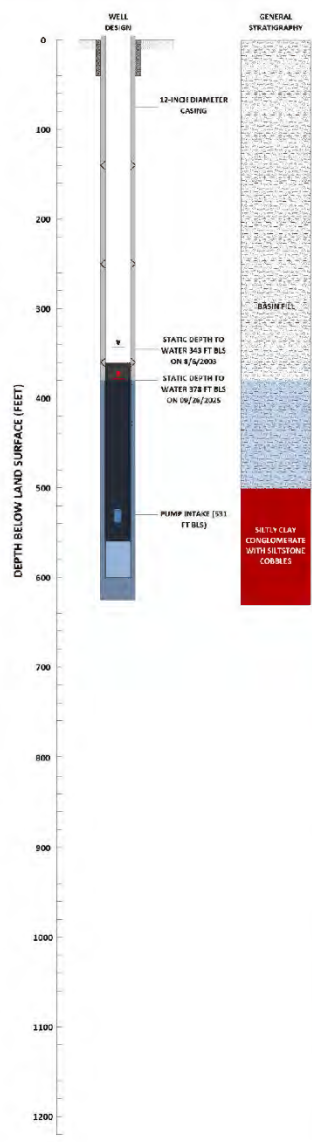
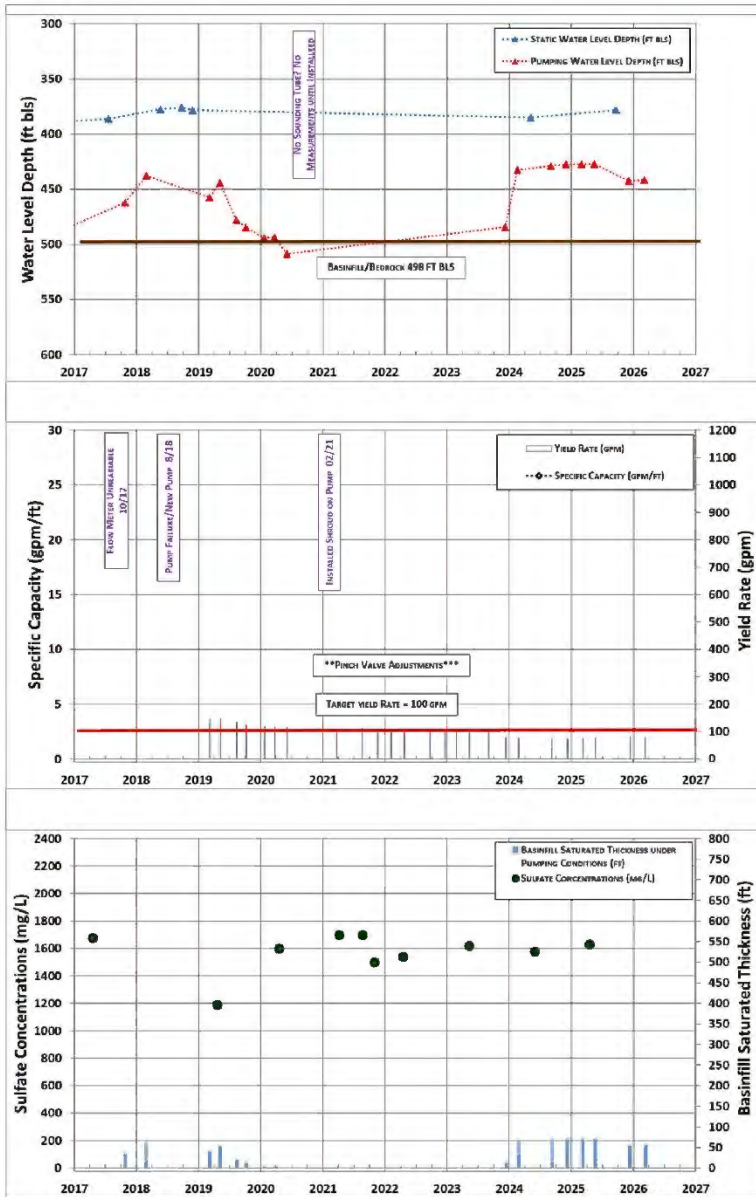
<p>BasinWells ASSOCIATES PLLC SPECIALISTS IN GROUNDWATER DEVELOPMENT</p>	<p>FREEPORT-MCMORAN COPPER &amp; GOLD</p>	<p>IW-11: WATER LEVELS, YIELD, SPECIFIC CAPACITY, BASINFILL SAT. THK. AND SULFATE</p>
	<p>VERSION DATE: MARCH, 2026</p>	<p>CADASTRAL: D-18-13 21CBC ADWR REG. NO.: 55-508235 DRILL YEAR: 1984</p>

**BasinWells Associates PLLC**



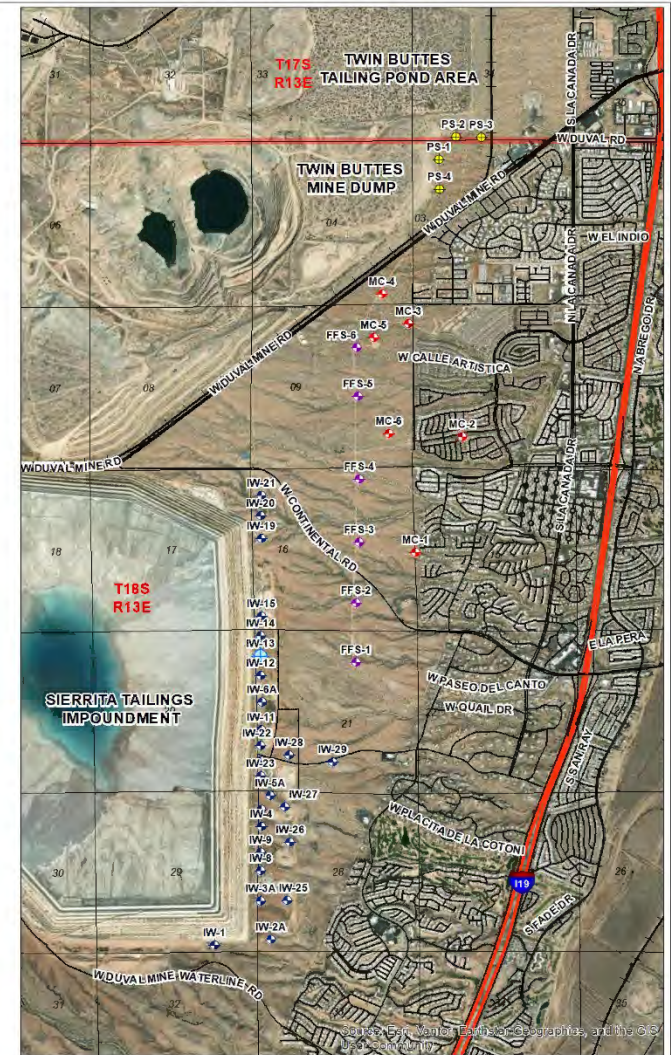
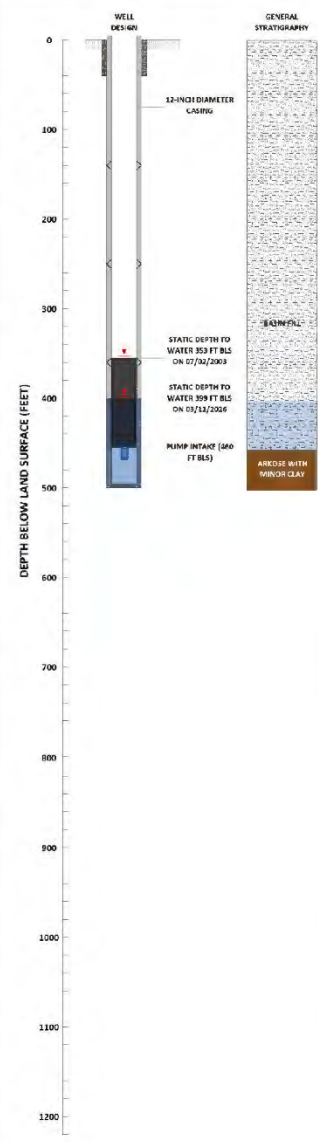
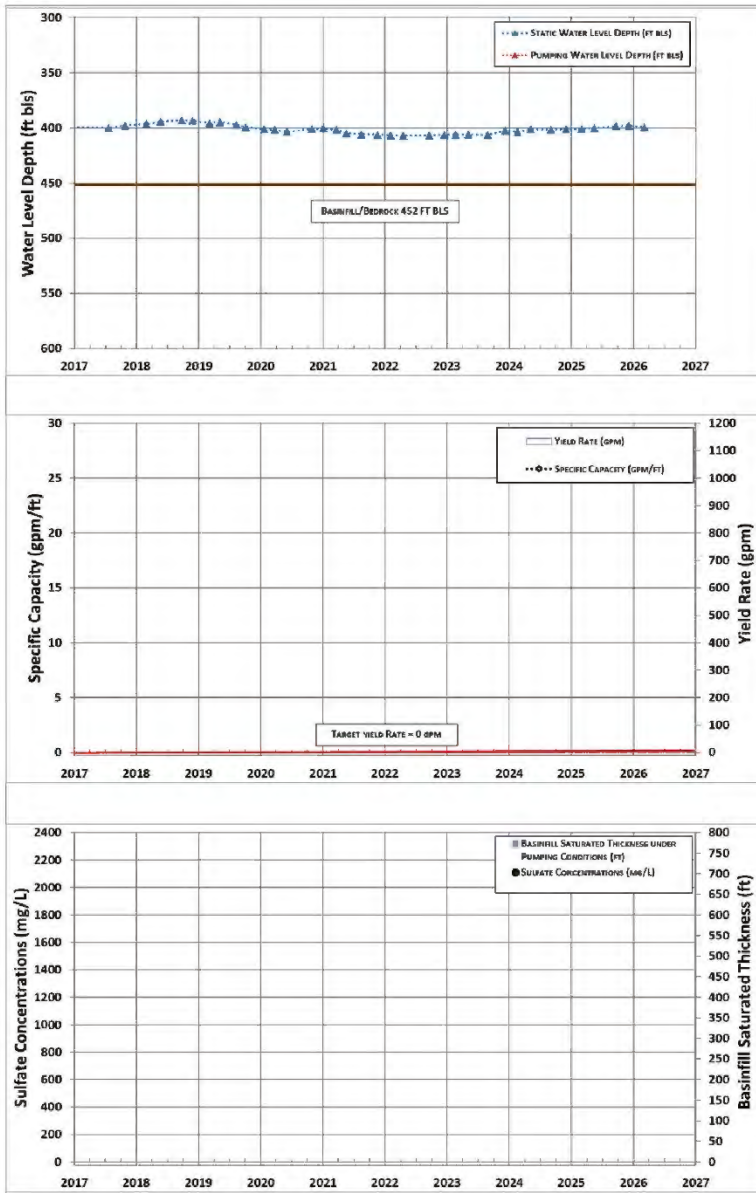
<p><b>BasinWells</b> ASSOCIATES PLLC SPECIALISTS IN GROUNDWATER DEVELOPMENT</p>	<p><b>FREEPORT-McMORAN</b> COPPER &amp; GOLD</p>	<p>IW-6A: WATER LEVELS, YIELD, SPECIFIC CAPACITY, BASINFILL SAT. THK. AND SULFATE</p>
	<p><b>VERSION DATE:</b> MARCH, 2026</p>	<p>CADASTRAL: D-18-13 21BCC ADWR REG. NO.: 55-545565 DRILL YEAR: 1994</p>

**BasinWells Associates PLLC**



<p><b>BasinWells</b> ASSOCIATES PLLC SPECIALISTS IN GROUNDWATER DEVELOPMENT</p>	<p><b>FREEPORT-McMORAN</b> COPPER &amp; GOLD</p>	IW-12: WATER LEVELS, YIELD, SPECIFIC CAPACITY, BASINFILL SAT. THK. AND SULFATE
	<p><b>VERSION DATE:</b> MARCH, 2026</p>	<p>CADASTRAL: D-18-13 218CB ADWR REG. NO.: 55-545555 DRILL YEAR: 1994</p>

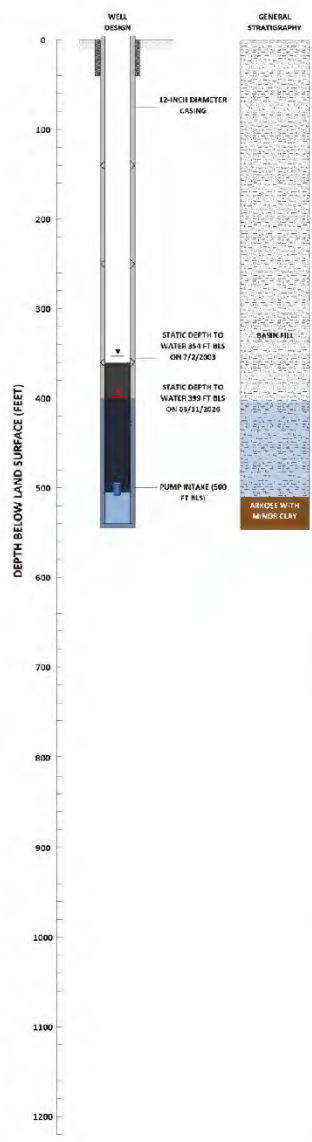
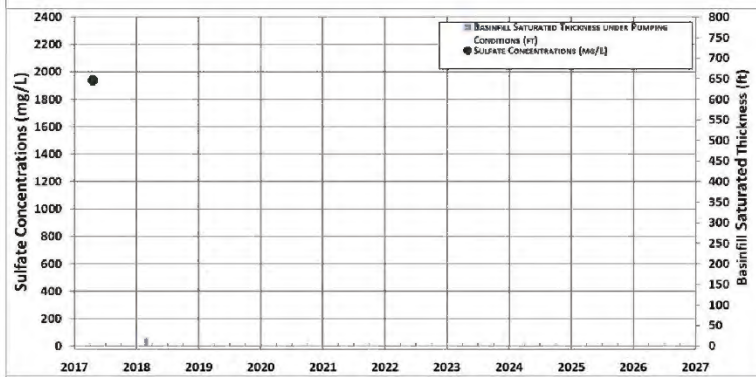
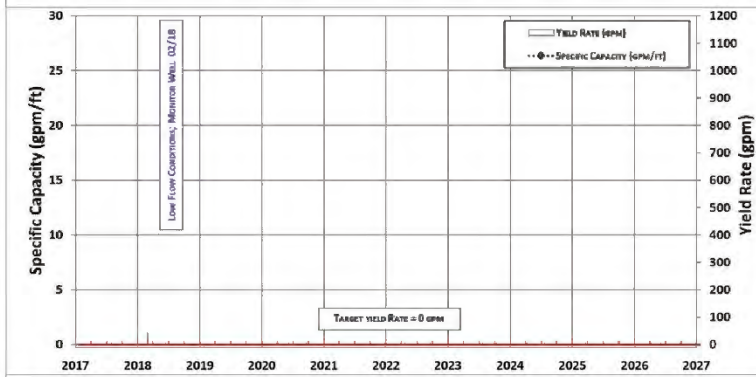
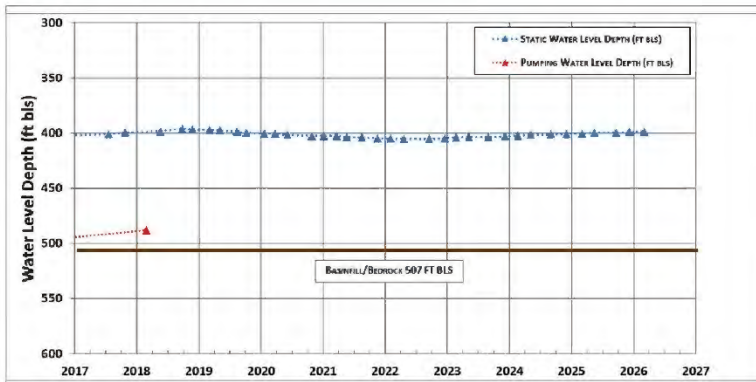
**BasinWells Associates PLLC**



<p><b>BasinWells</b> ASSOCIATES PLLC SPECIALISTS IN GROUNDWATER DEVELOPMENT</p>	<p><b>FREEPORT-MCMORAN</b> COPPER &amp; GOLD</p>	<p>IW-13: WATER LEVELS, YIELD, SPECIFIC CAPACITY, BASINFILL SAT. THK. AND SULFATE</p>
	<p><b>VERSION DATE:</b> MARCH, 2026</p>	<p>CADASTRAL: D-18-13 21B8C ADWR REG. NO.: 55-545556 DRILL YEAR: 1994</p>

**BasinWells Associates PLLC**



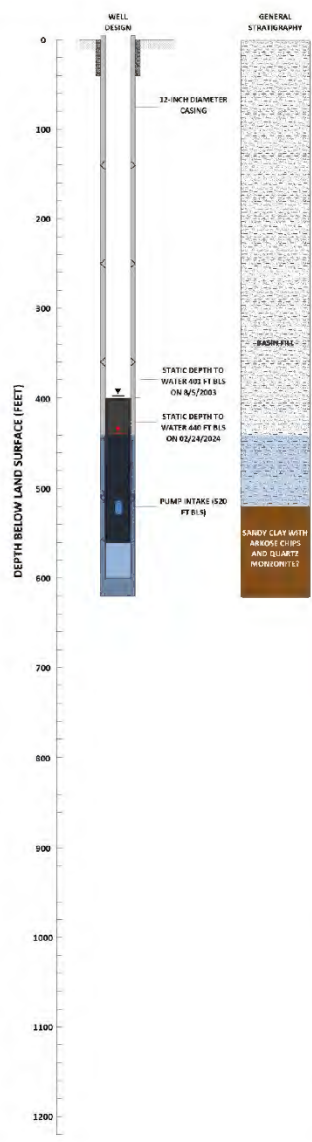
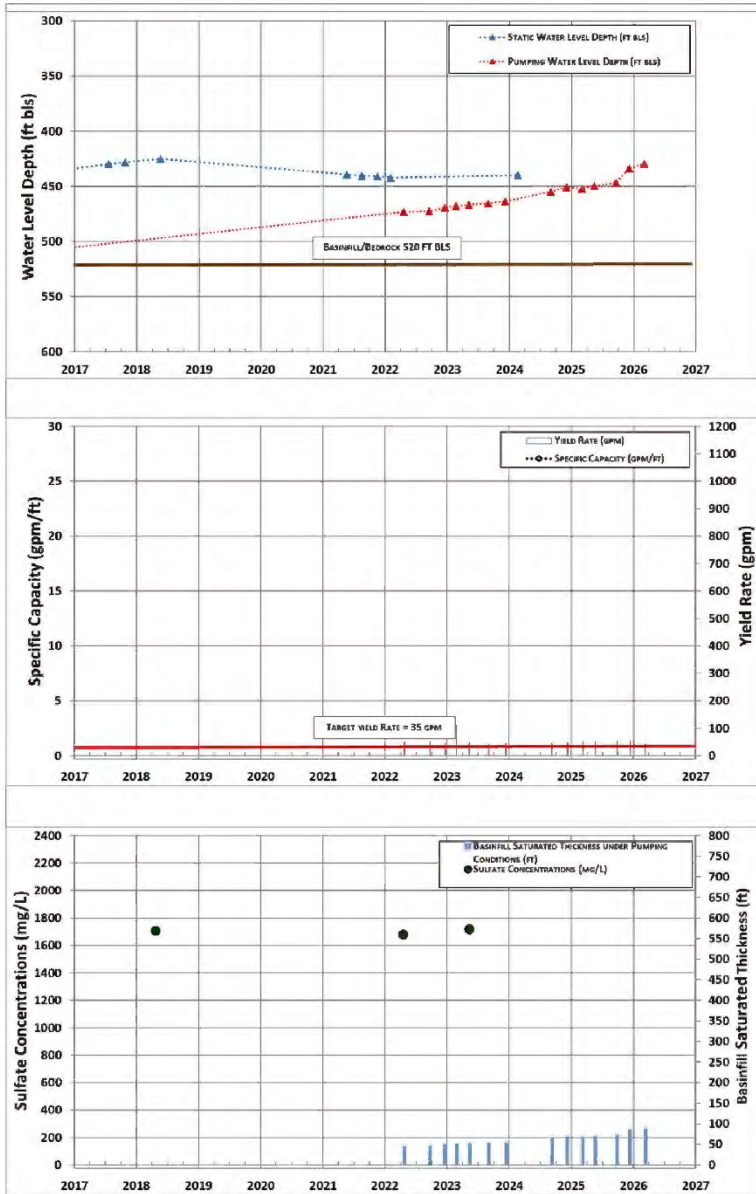


<p><b>BasinWells</b> ASSOCIATES PLLC SPECIALISTS IN GROUNDWATER DEVELOPMENT</p>	<p><b>FREEPORT-MCMORAN</b> COPPER &amp; GOLD</p>	<p>IW-15: WATER LEVELS, YIELD, SPECIFIC CAPACITY, BASINFILL SAT. THK. AND SULFATE</p>
	<p><b>VERSION DATE:</b> MARCH, 2026</p>	<p>CADASTRAL: D-18-13 16CCC ADWR REG. NO.: 55-545558 DRILL YEAR: 1995</p>

**BasinWells Associates PLLC**

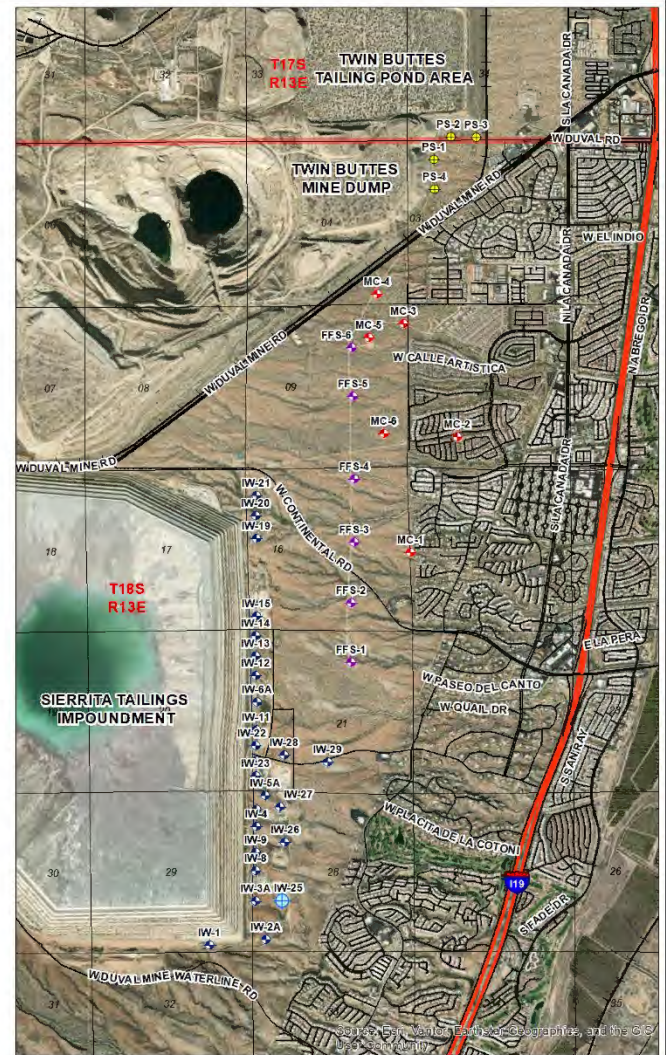
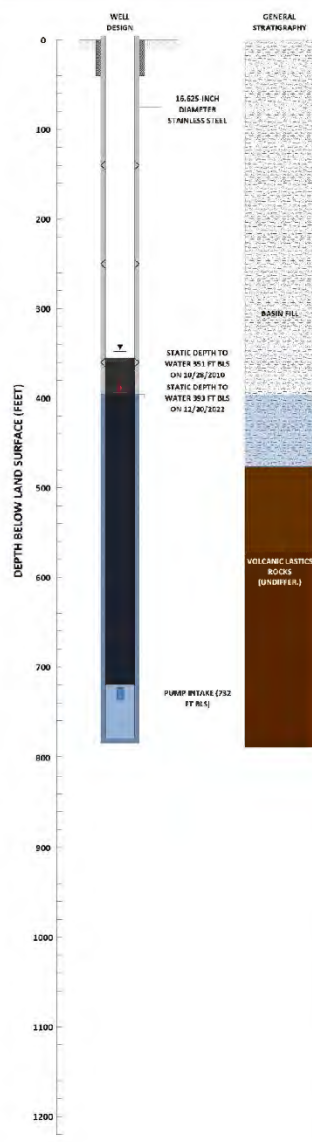
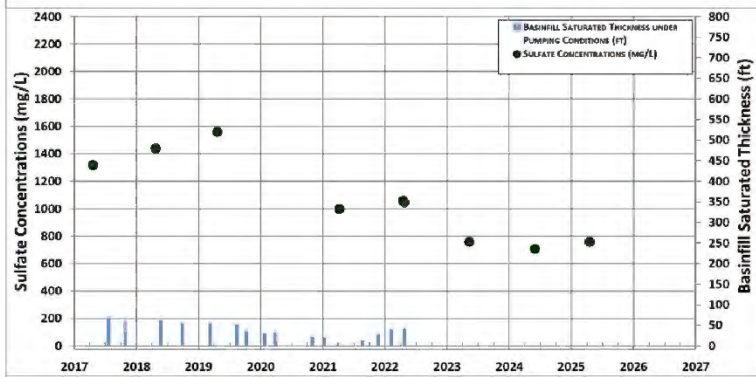
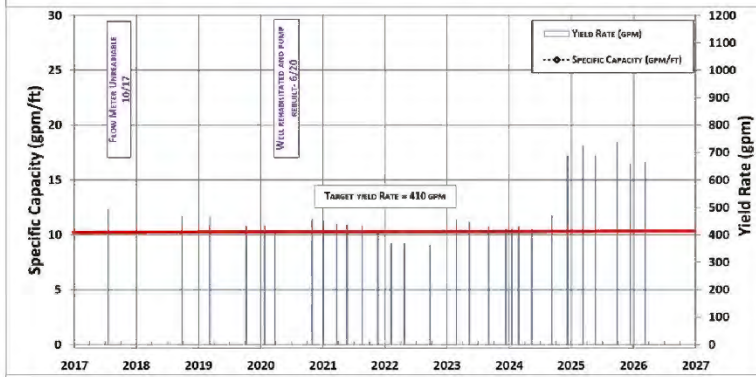
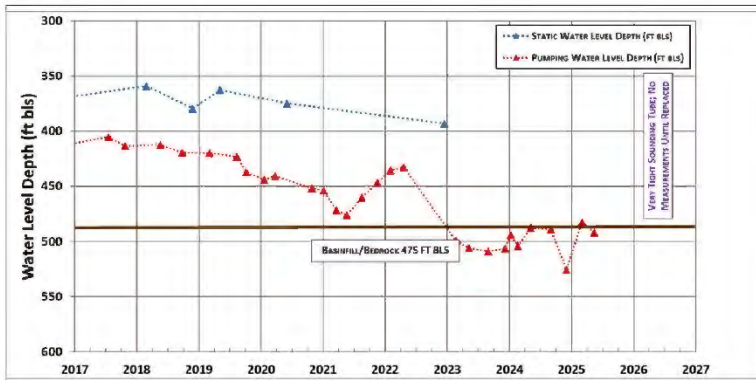






<p><b>BasinWells</b> ASSOCIATES PLLC SPECIALISTS IN GROUNDWATER DEVELOPMENT</p>	<p><b>FREEPORT-McMORAN</b> COPPER &amp; GOLD</p>	IW-21: WATER LEVELS, YIELD, SPECIFIC CAPACITY, BASINFILL SAT. THK. AND SULFATE
	<p><b>VERSION DATE:</b> MARCH, 2026</p>	CADASTRAL: D-18-13 168BC ADWR REG. NO.: 55-545564 DRILL YEAR: 1995

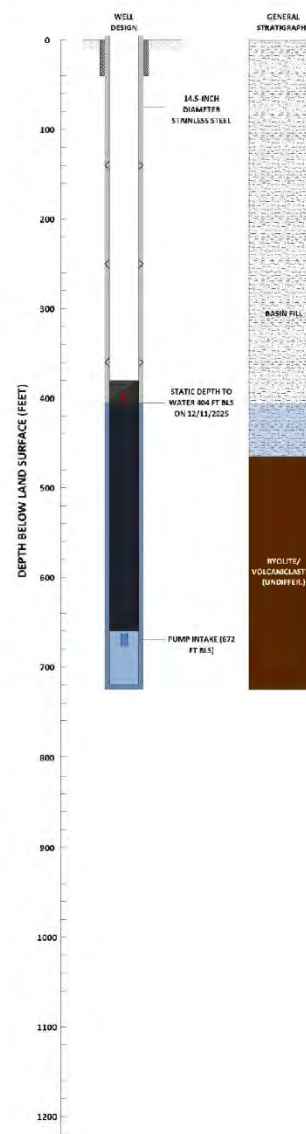
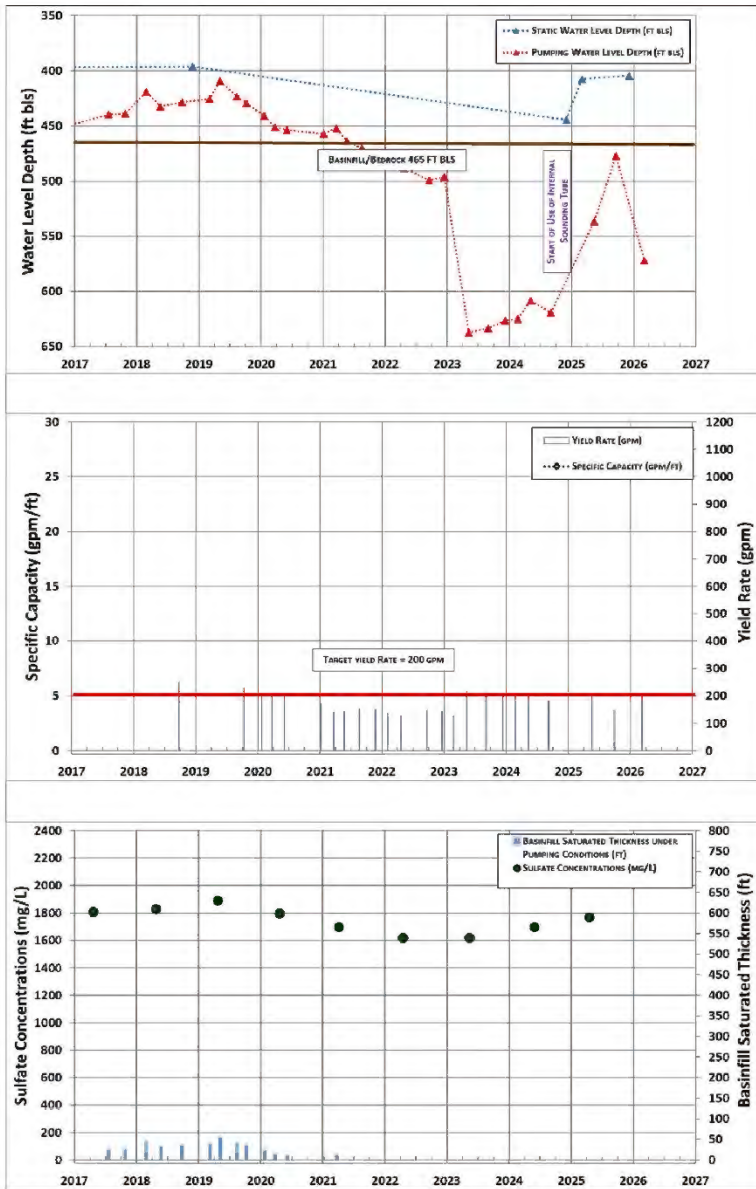
**BasinWells Associates PLLC**



<p>SPECIALISTS IN GROUNDWATER DEVELOPMENT</p>		IW-25: WATER LEVELS, YIELD, SPECIFIC CAPACITY, BASINFILL SAT. THK. AND SULFATE
	VERSION DATE: <b>MARCH, 2026</b>	CADASTRAL: D-18-13 28CBD ADWR REG. NO.: 55-219596 DRILL YEAR: 2010

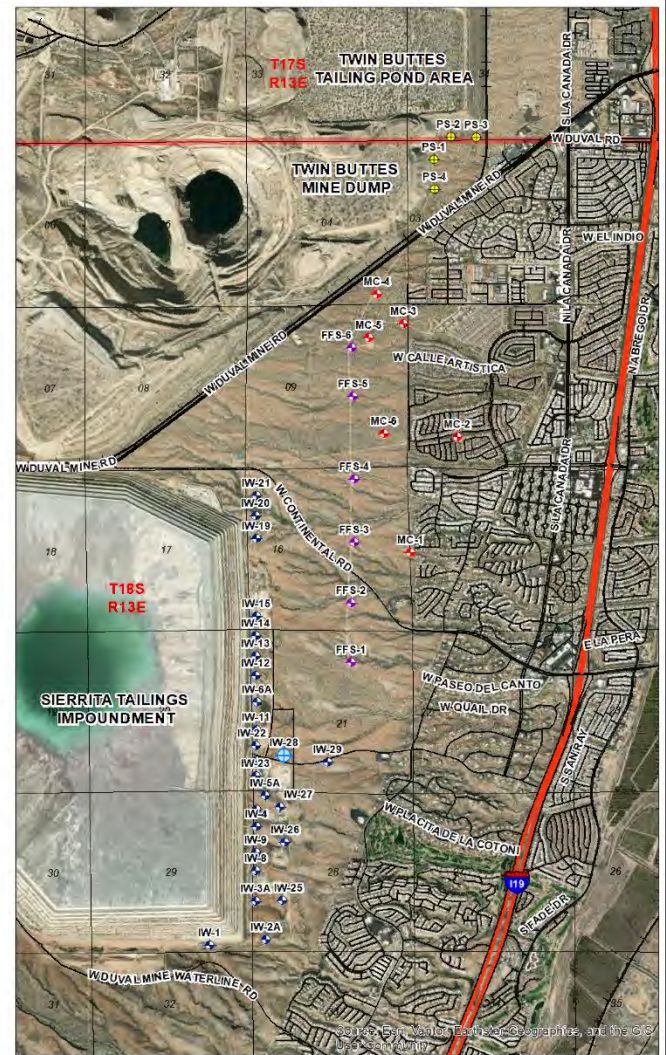
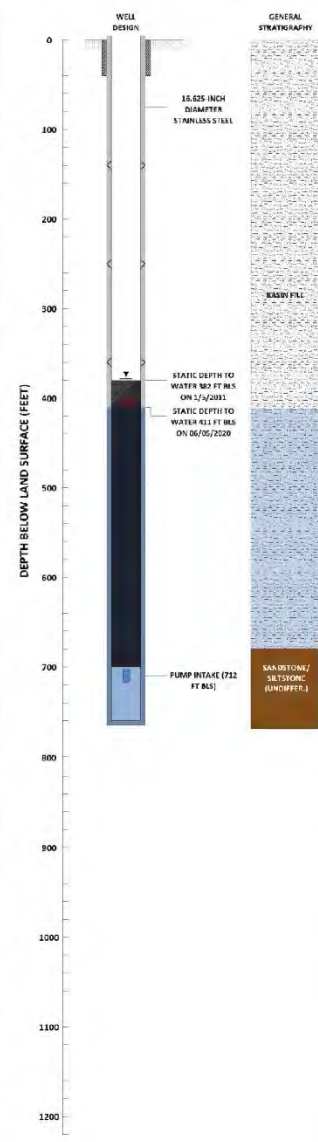
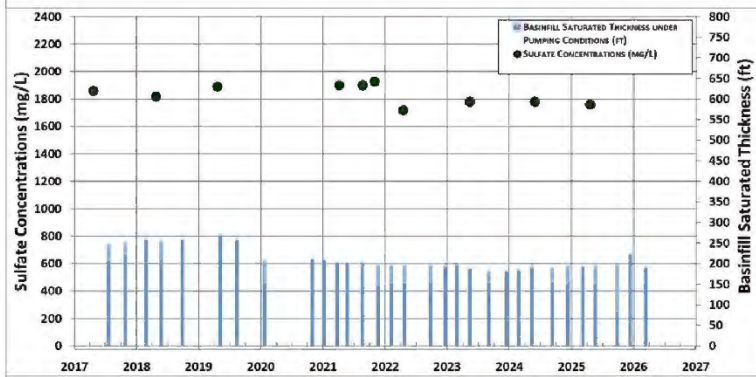
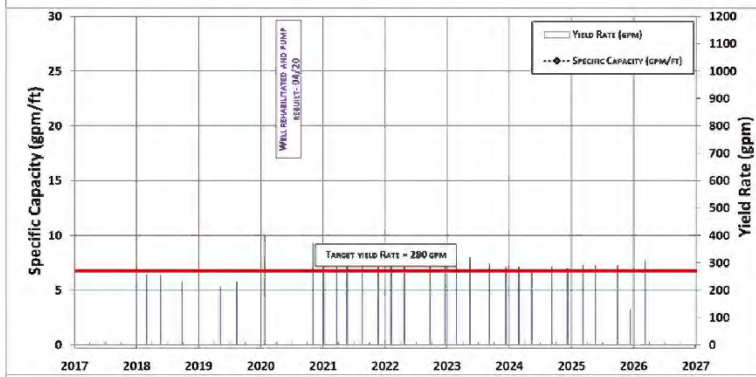
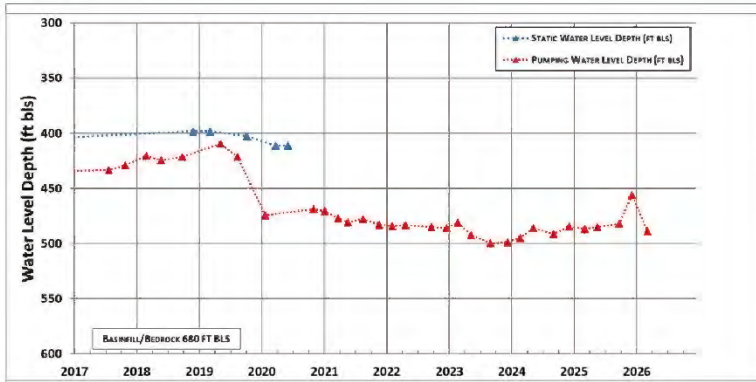
**BasinWells Associates PLLC**





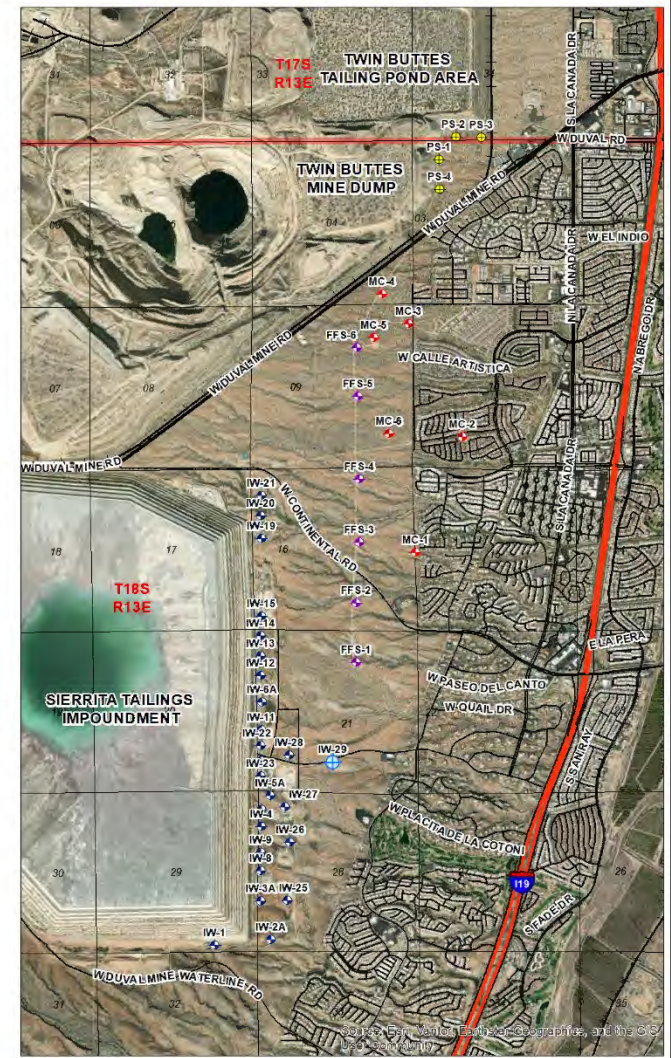
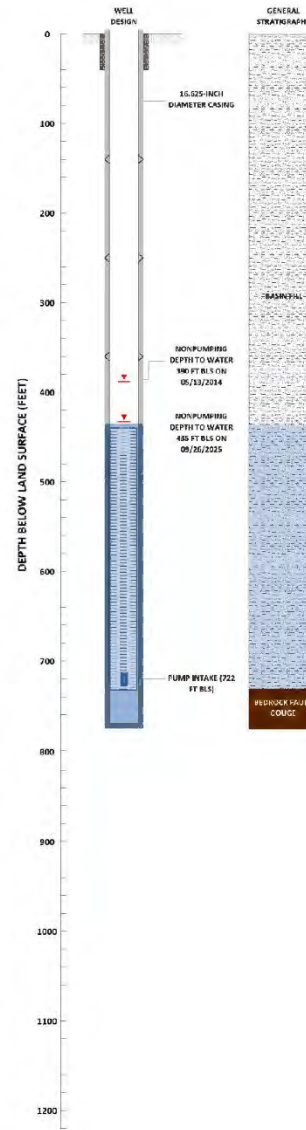
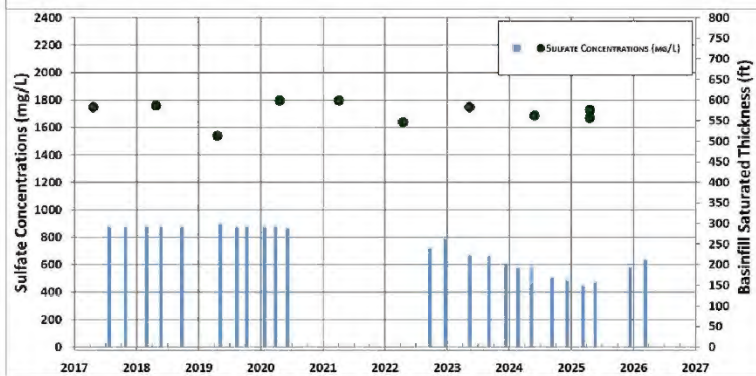
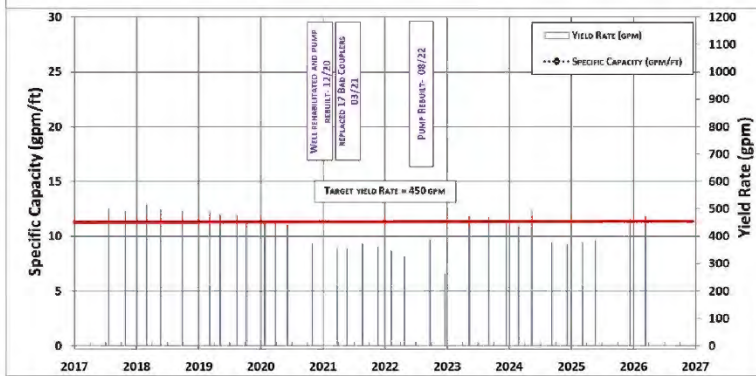
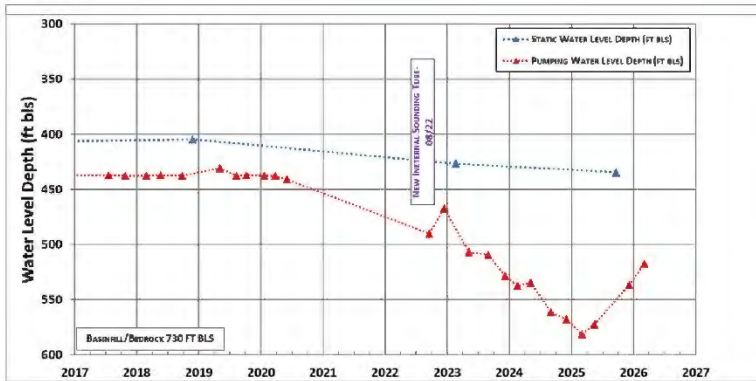
<p><b>BasinWells</b> ASSOCIATES PLLC SPECIALISTS IN GROUNDWATER DEVELOPMENT</p>	<p><b>FREEPORT-McMORAN</b> COPPER &amp; GOLD</p>	<p>IW-27: WATER LEVELS, YIELD, SPECIFIC CAPACITY, BASINFILL SAT. THK. AND SULFATE</p>
	<p><b>VERSION DATE:</b> MARCH, 2026</p>	<p>CADASTRAL: D-18-13 288BD ADWR REG. NO.: 55-219136 DRILL YEAR: 2010</p>

**BasinWells Associates PLLC**



<p><b>BasinWells</b> ASSOCIATES PLLC SPECIALISTS IN GROUNDWATER DEVELOPMENT</p>	<p><b>FREEPORT-McMORAN</b> COPPER &amp; GOLD</p>	<p>IW-28: WATER LEVELS, YIELD, SPECIFIC CAPACITY, BASINFILL SAT. THK. AND SULFATE</p>
	<p><b>VERSION DATE:</b> MARCH, 2026</p>	<p>CADASTRAL: D-18-13 21CCA ADWR REG. NO.: 55-219137 DRILL YEAR: 2010</p>

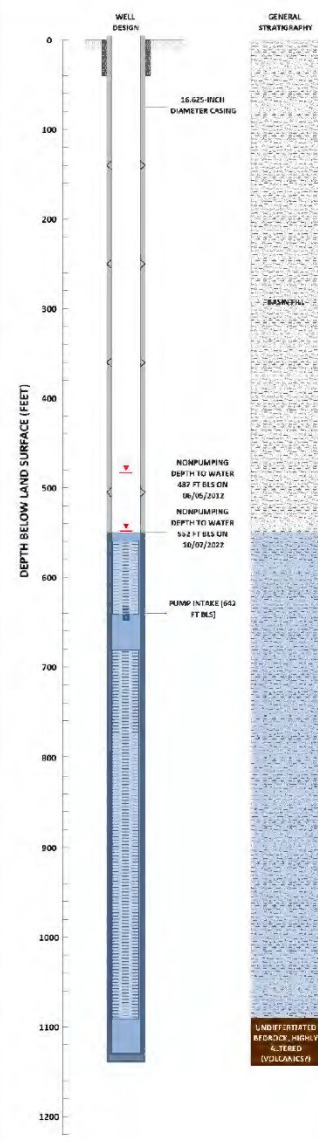
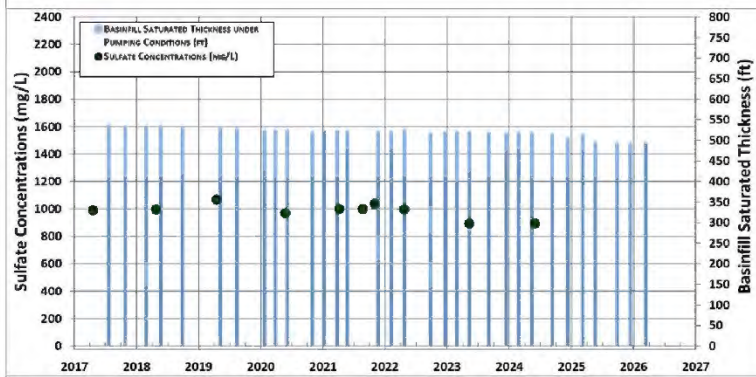
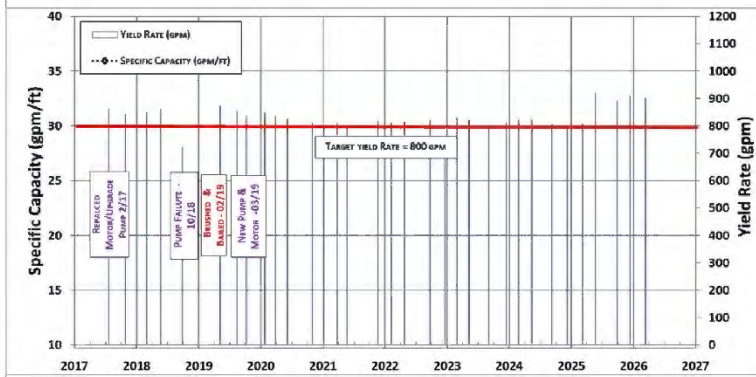
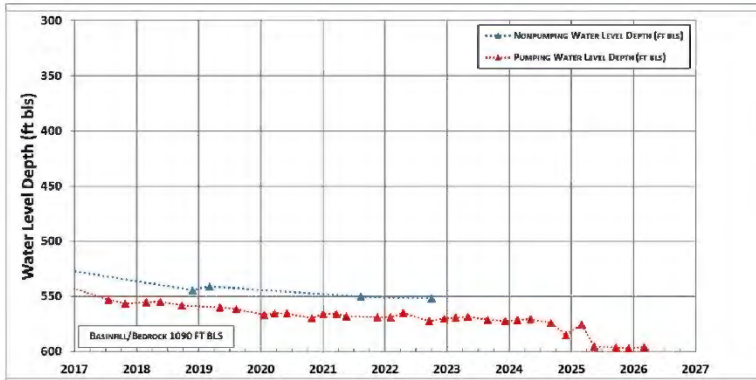
**BasinWells Associates PLLC**



<p><b>BasinWells</b> ASSOCIATES PLLC SPECIALISTS IN GROUNDWATER DEVELOPMENT</p>	<p><b>FREEPORT-McMORAN</b> COPPER &amp; GOLD</p>	<p>IW-29: WATER LEVELS, YIELD, SPECIFIC CAPACITY, BASINFILL SAT. THK. AND SULFATE</p>
	<p><b>VERSION DATE:</b> MARCH, 2026</p>	<p>CADASTRAL: D-18-13 21CDA ADWR REG. NO.: 55-222865 DRILL YEAR: 2014</p>

**BasinWells Associates PLLC**

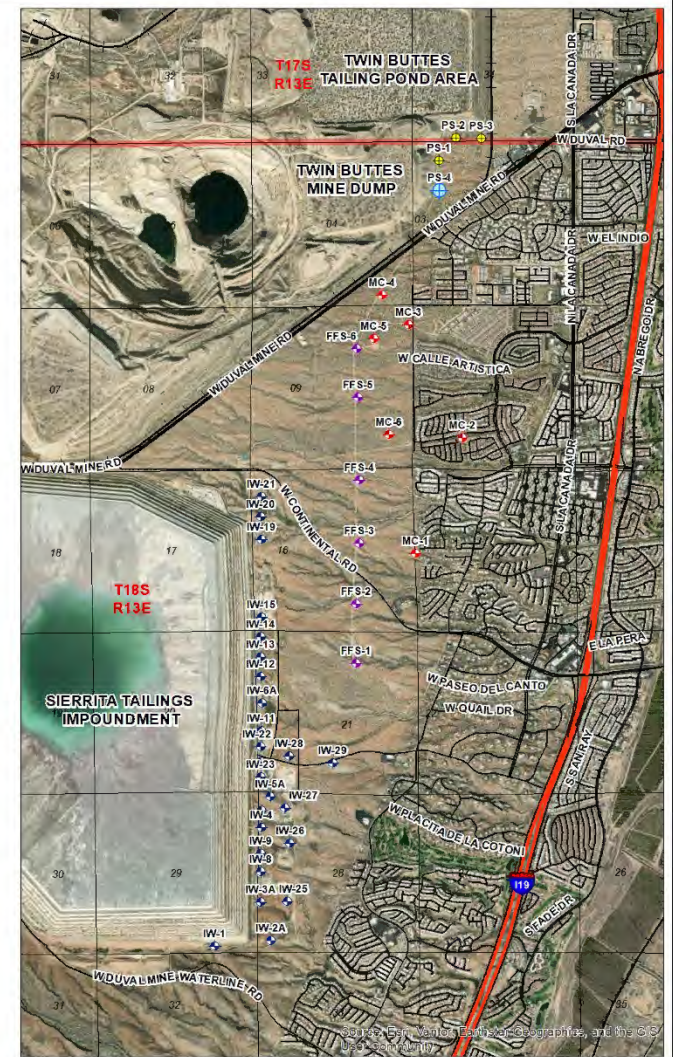
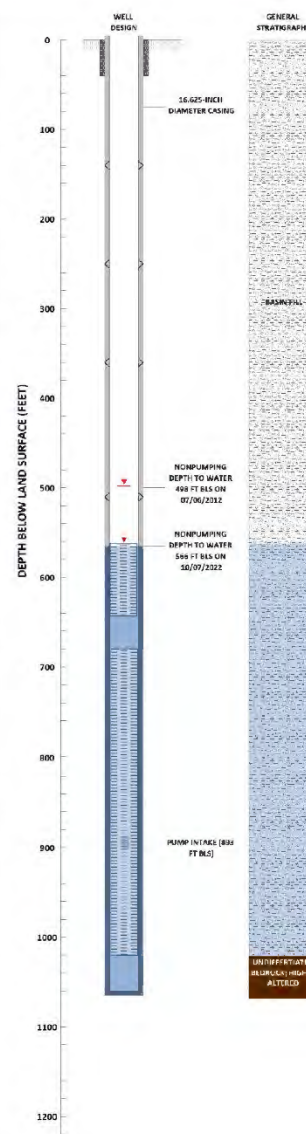
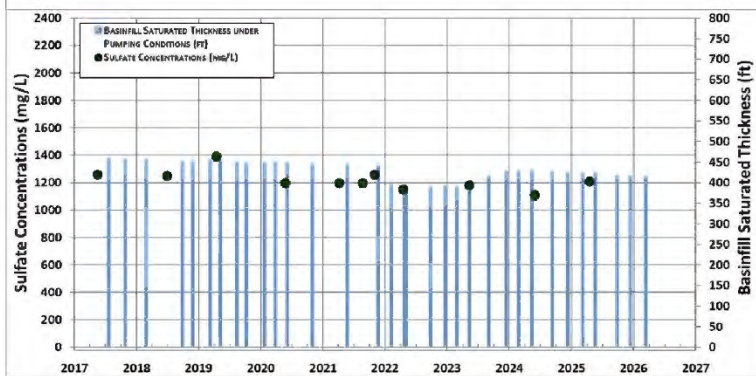
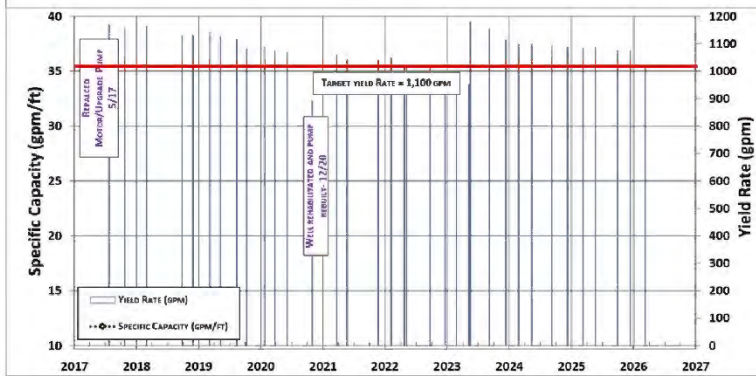
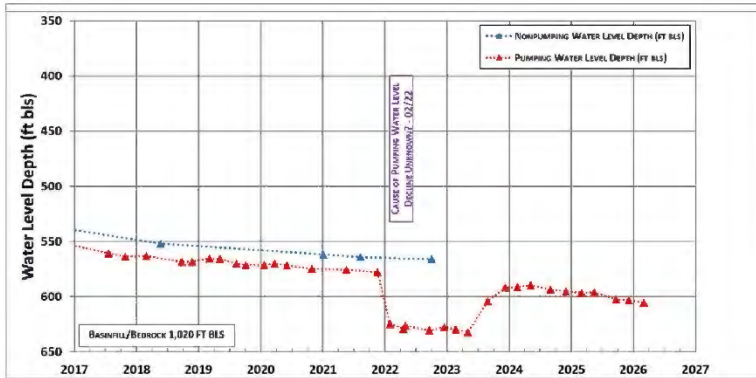




<p><b>BasinWells</b> ASSOCIATES PLLC SPECIALISTS IN GROUNDWATER DEVELOPMENT</p>	<p><b>FREEPORT-McMORAN</b> COPPER &amp; GOLD</p>	<p>PS-2: WATER LEVELS, YIELD, SPECIFIC CAPACITY, BASINFILL SAT. THK. AND SULFATE</p>
	<p>VERSION DATE: <b>MARCH, 2026</b></p>	<p>CADASTRAL: D-17-13 34CDC ADWR REG. NO.: 55-220862 DRILL YEAR: 2012</p>

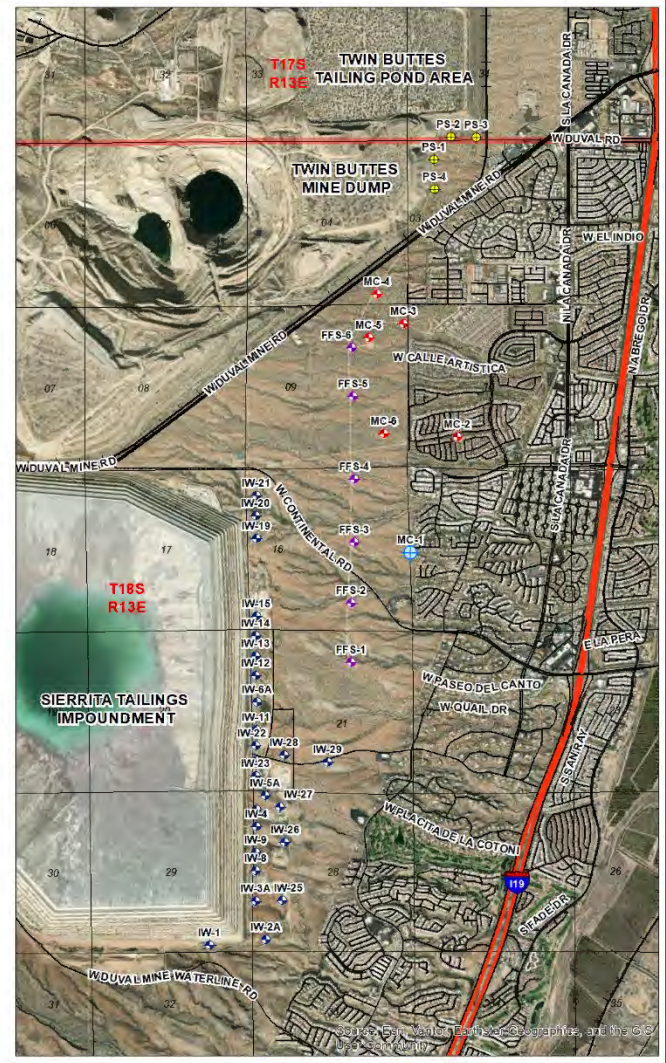
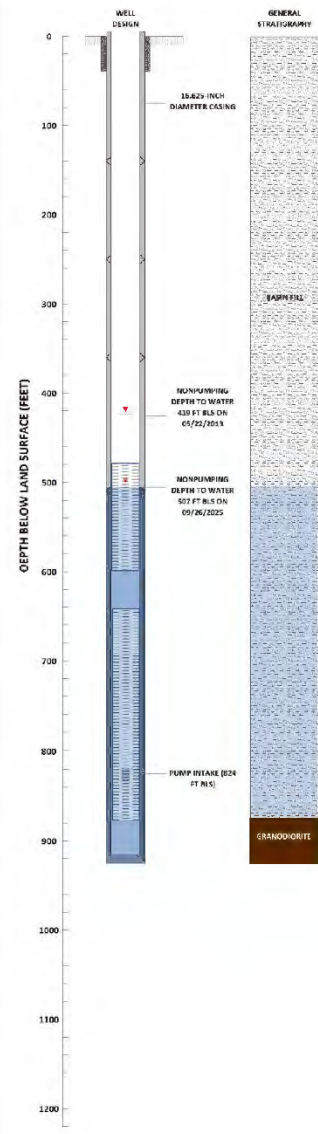
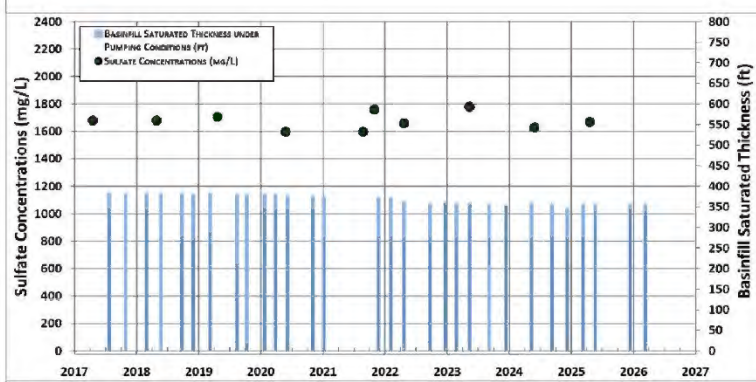
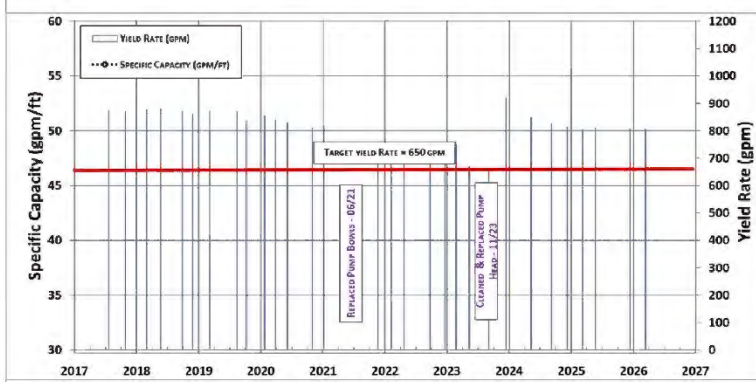
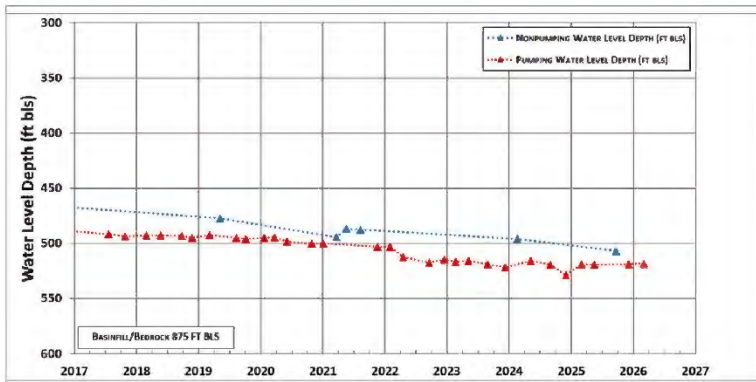
**BasinWells Associates PLLC**





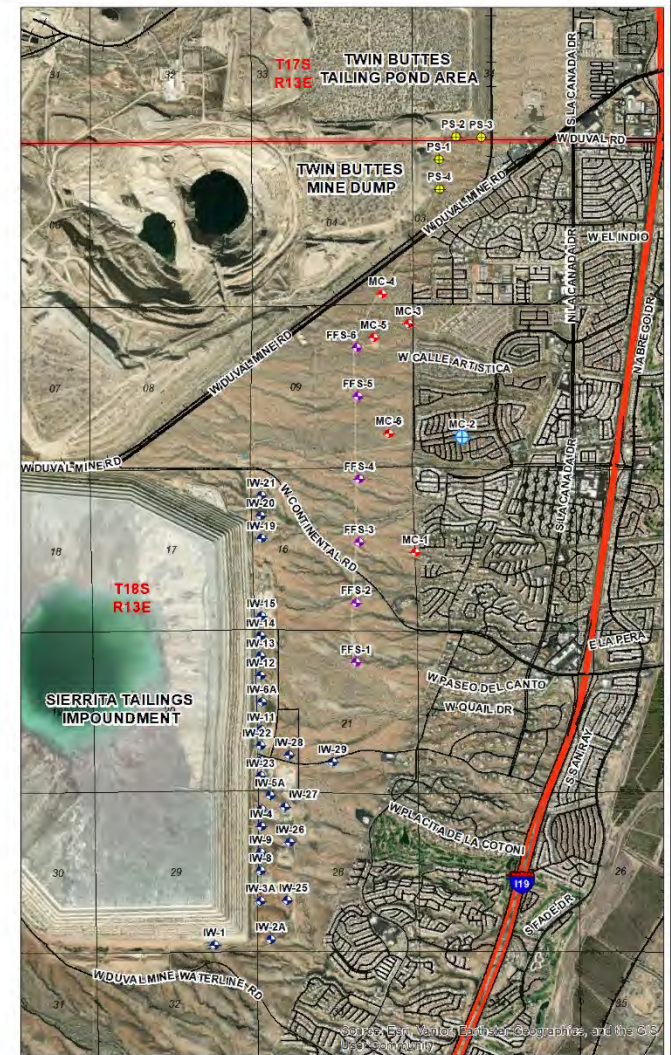
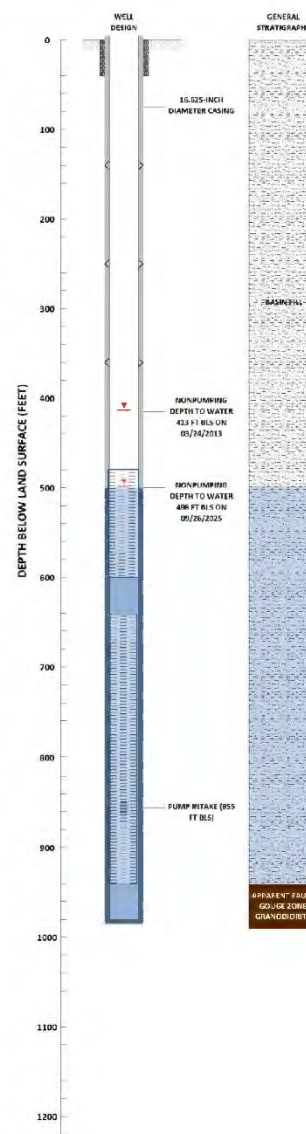
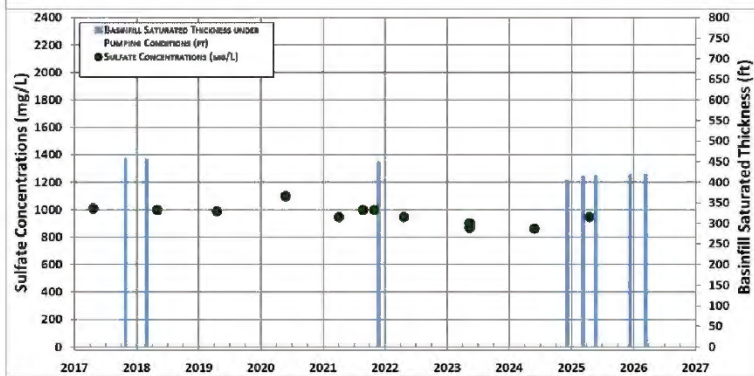
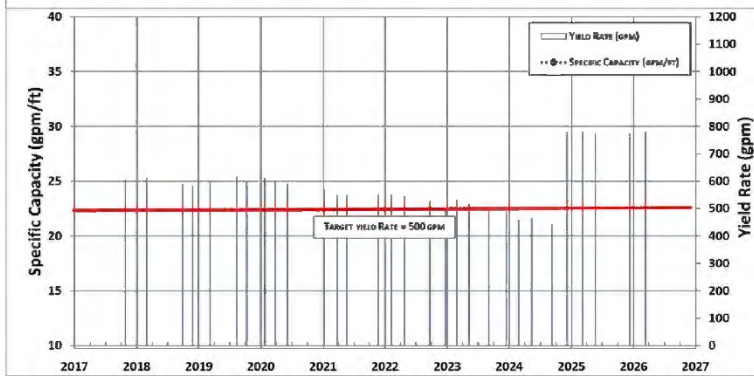
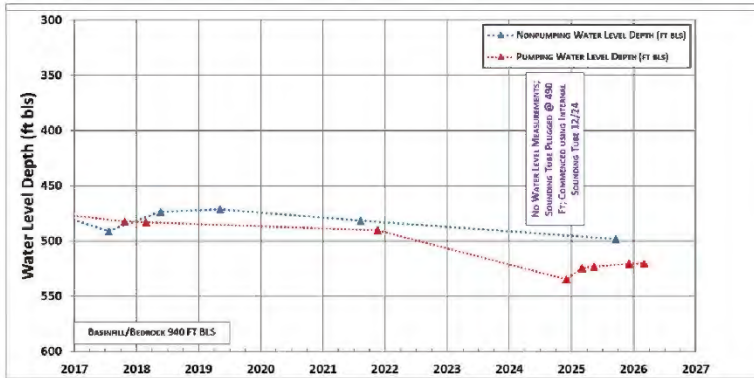
<p>BasinWells ASSOCIATES PLLC SPECIALISTS IN GROUNDWATER DEVELOPMENT</p>	<p>Freeport-McMoran COPPER &amp; GOLD</p>	<p>PS-4: WATER LEVELS, YIELD, SPECIFIC CAPACITY, BASINFILL SAT. THK. AND SULFATE</p>
	<p>VERSION DATE: MARCH, 2026</p>	<p>CADASTRAL: D-18-13 03BCA ADWR REG. NO.: 55-220864 DRILL YEAR: 2012</p>

**BasinWells Associates PLLC**



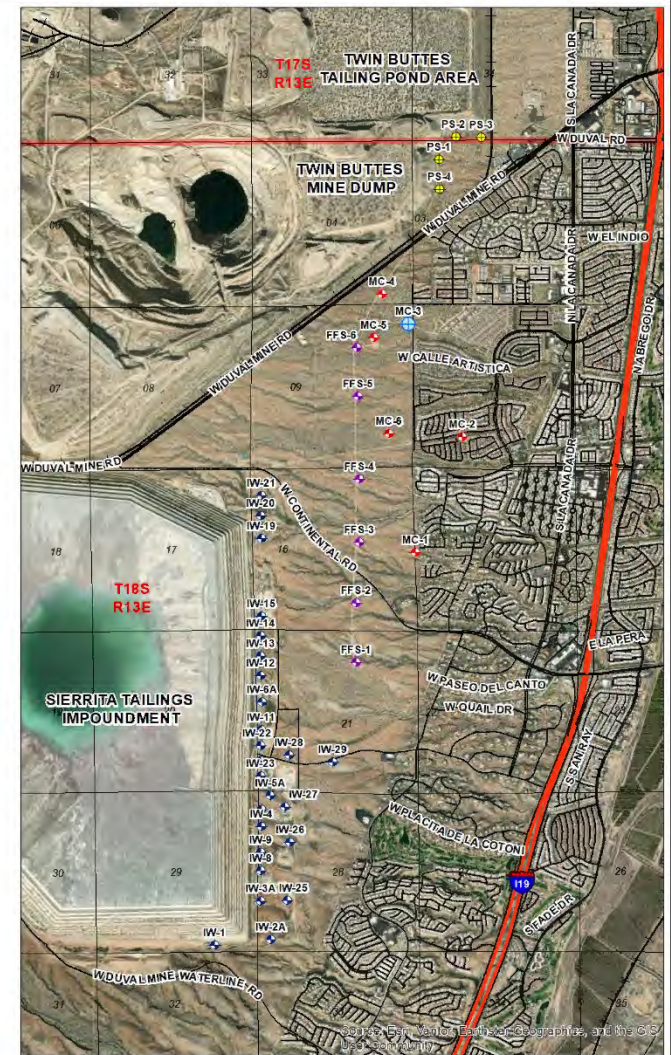
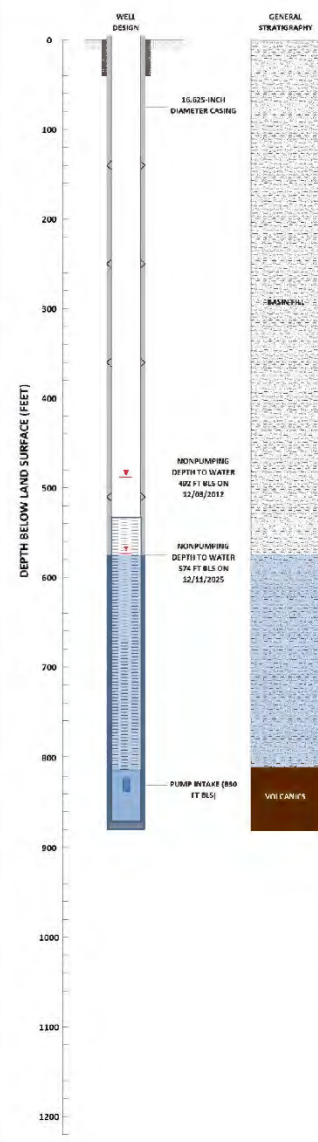
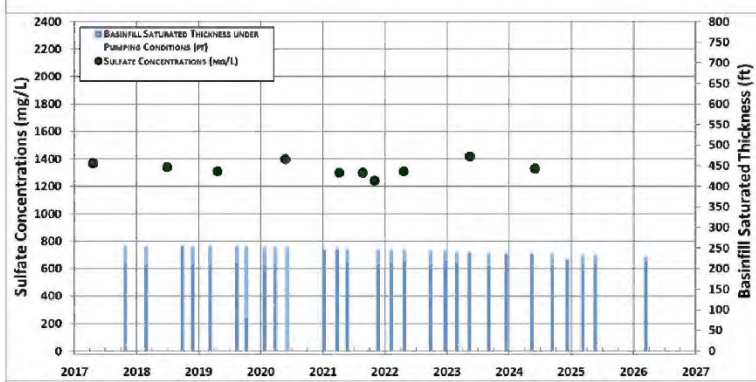
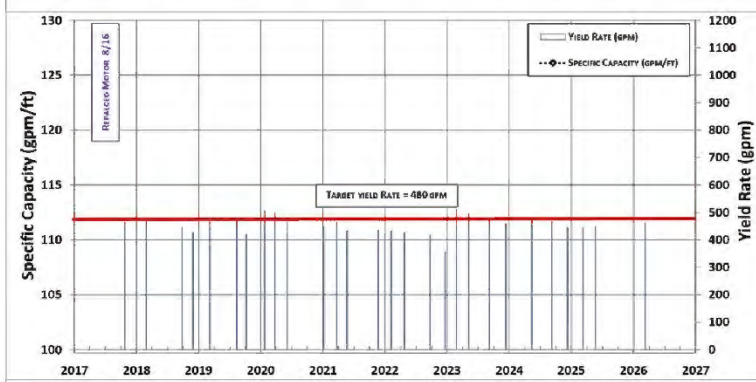
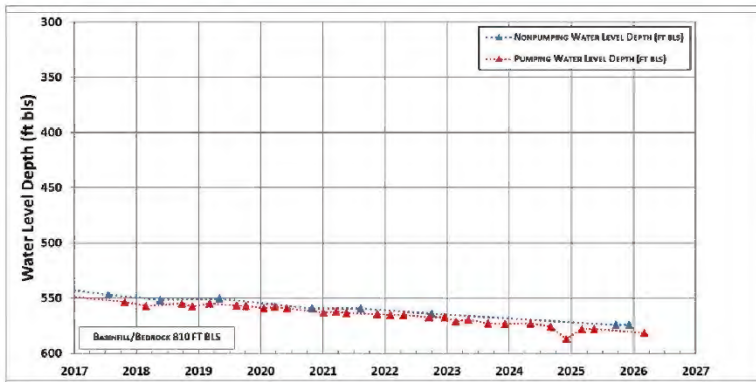
<p>BasinWells ASSOCIATES PLLC SPECIALISTS IN GROUNDWATER DEVELOPMENT</p>	<p>FREEPORT-McMORAN COPPER &amp; GOLD</p>	<p>MC-1: WATER LEVELS, YIELD, SPECIFIC CAPACITY, BASINFILL SAT. THK. AND SULFATE</p>
	<p>VERSION DATE: MARCH, 2026</p>	<p>CADASTRAL: D-18-13 16DAA ADWR REG. NO.: 55-221660 DRILL YEAR: 2013</p>

**BasinWells Associates PLLC**



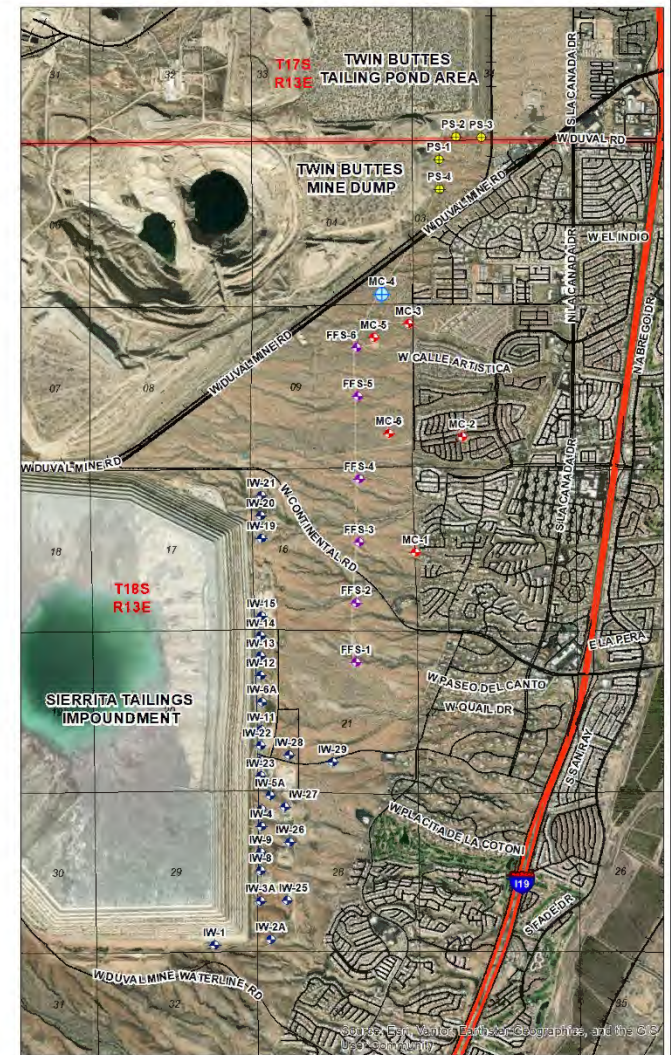
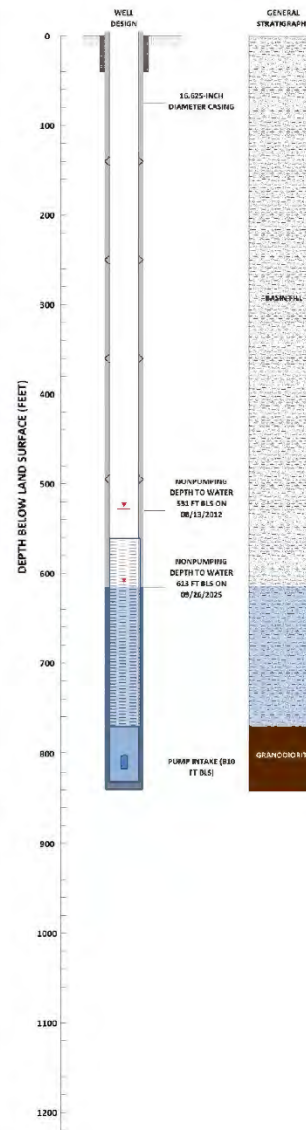
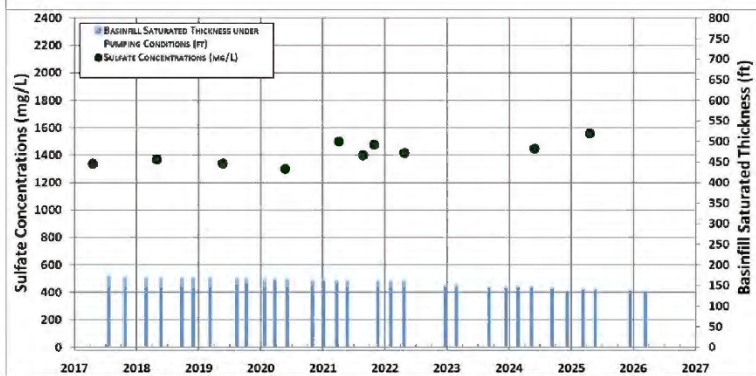
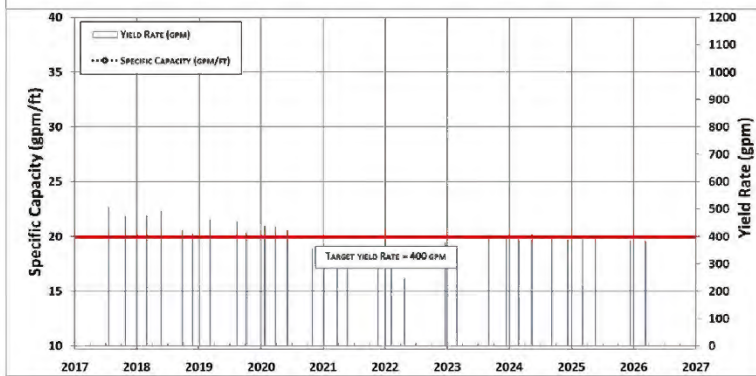
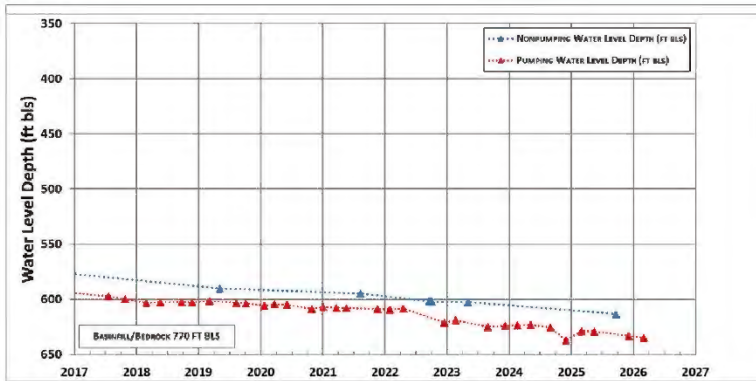
<p>BasinWells ASSOCIATES PLLC SPECIALISTS IN GROUNDWATER DEVELOPMENT</p>	<p>FREEPORT-McMORAN COPPER &amp; GOLD</p>	<p>MC-2: WATER LEVELS, YIELD, SPECIFIC CAPACITY, BASINFILL SAT. THK. AND SULFATE</p>
	<p>VERSION DATE: MARCH, 2026</p>	<p>CADASTRAL: D-18-13 10CCB ADWR REG. NO.: 55-221761 DRILL YEAR: 2013</p>

**BasinWells Associates PLLC**



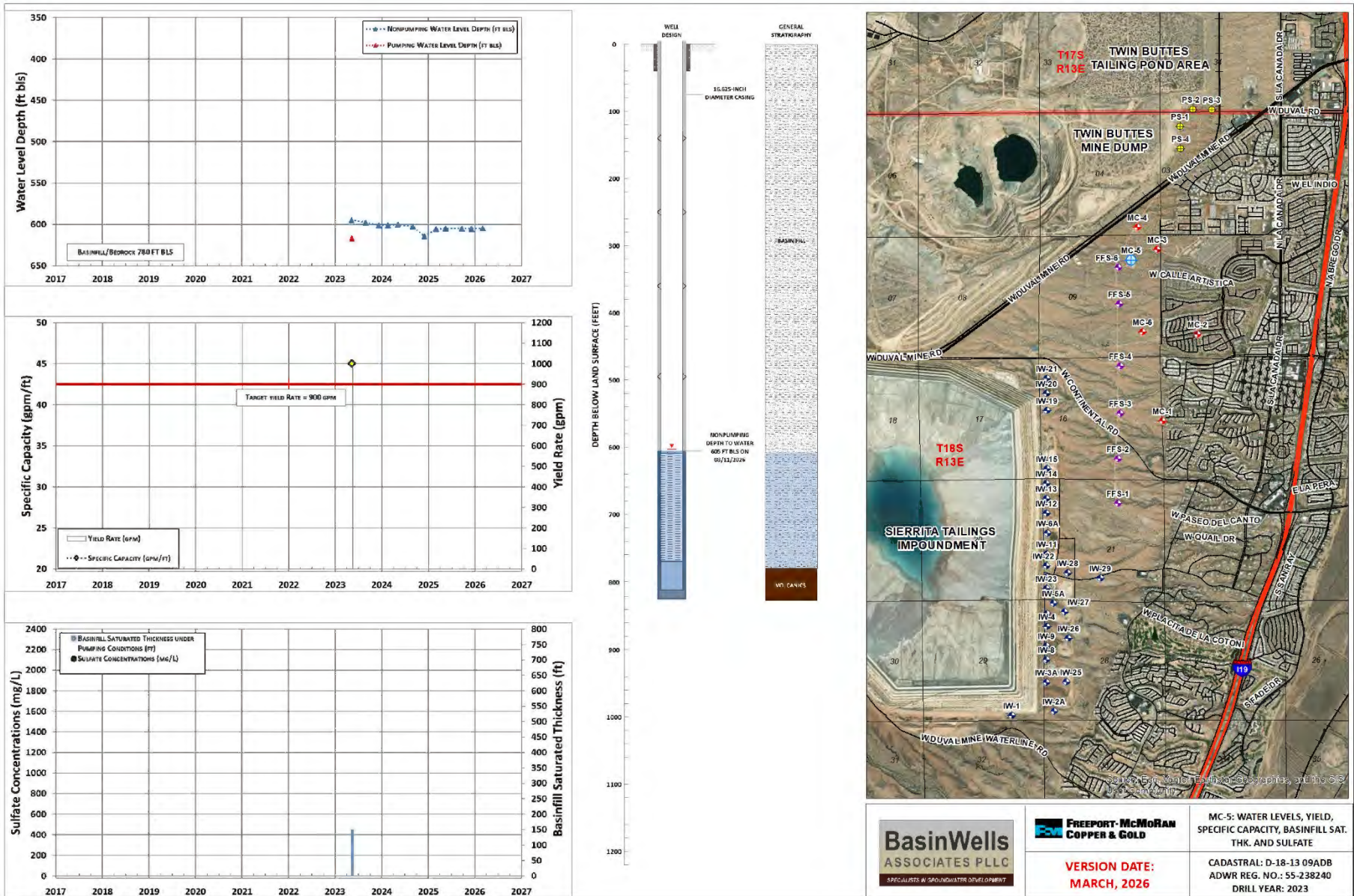
<p>BasinWells ASSOCIATES PLLC SPECIALISTS IN GROUNDWATER DEVELOPMENT</p>	<p>FREEPORT-MCMORAN COPPER &amp; GOLD</p>	<p>MC-3: WATER LEVELS, YIELD, SPECIFIC CAPACITY, BASINFILL SAT. THK. AND SULFATE</p>
	<p>VERSION DATE: MARCH, 2026</p>	<p>CADASTRAL: D-18-13 09AAA ADWR REG. NO.: 55-221661 DRILL YEAR: 2012</p>

**BasinWells Associates PLLC**

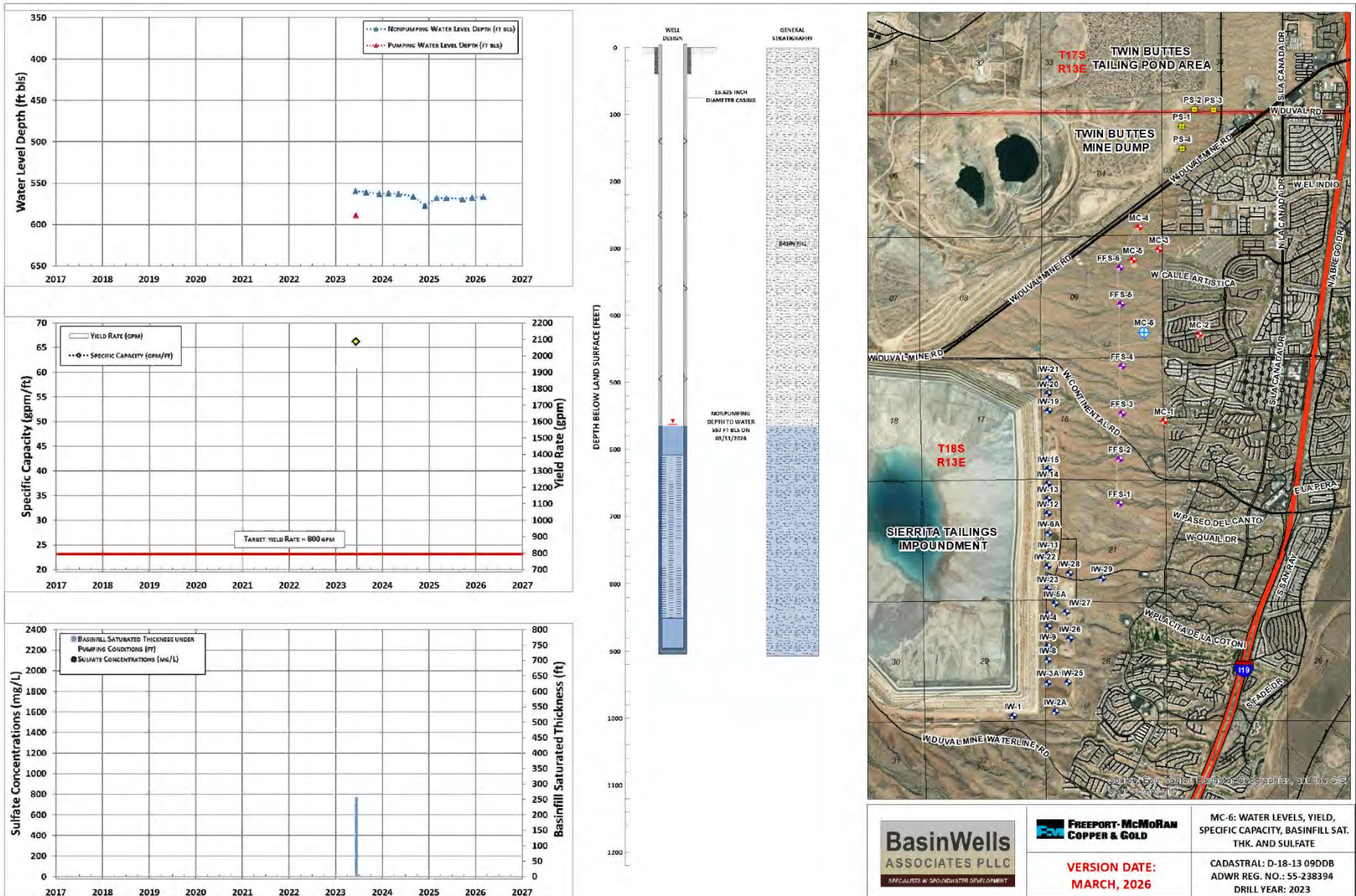


<p>BasinWells ASSOCIATES PLLC SPECIALISTS IN GROUNDWATER DEVELOPMENT</p>	<p>FREEPORT-McMORAN COPPER &amp; GOLD</p>	<p>MC-4: WATER LEVELS, YIELD, SPECIFIC CAPACITY, BASINFILL SAT. THK. AND SULFATE</p>
	<p>VERSION DATE: MARCH, 2026</p>	<p>CADASTRAL: D-18-13 04DDC ADWR REG. NO.: 55-220842 DRILL YEAR: 2012</p>

**BasinWells Associates PLLC**

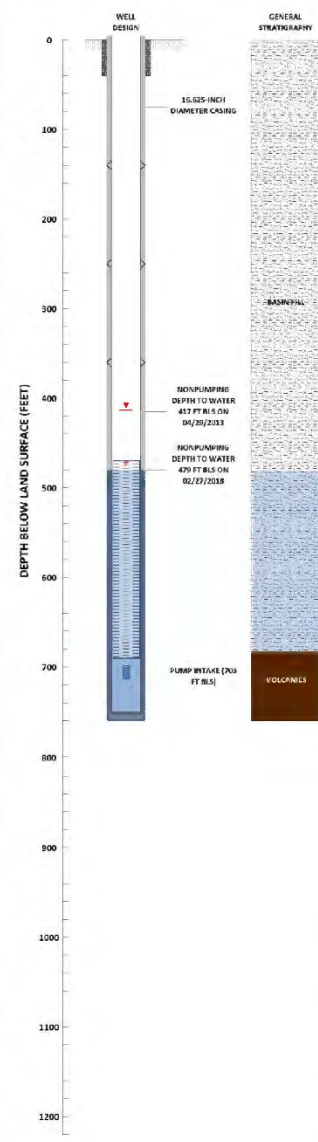
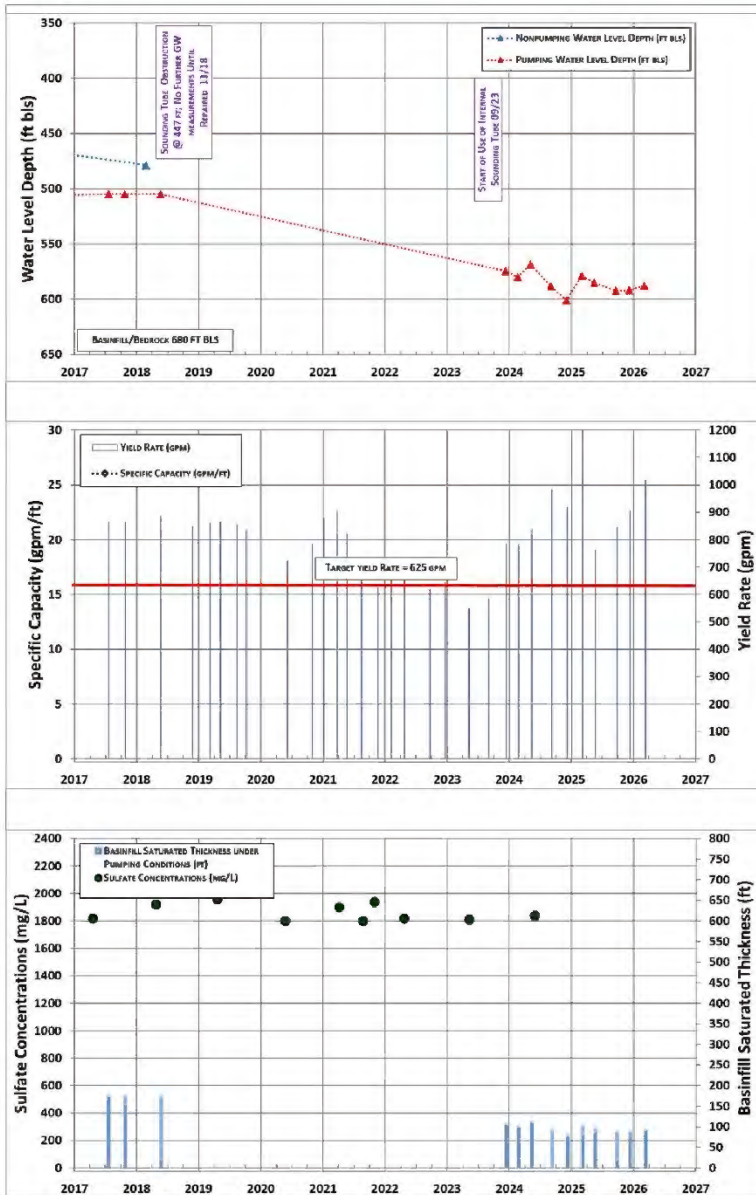


**BasinWells Associates PLLC**



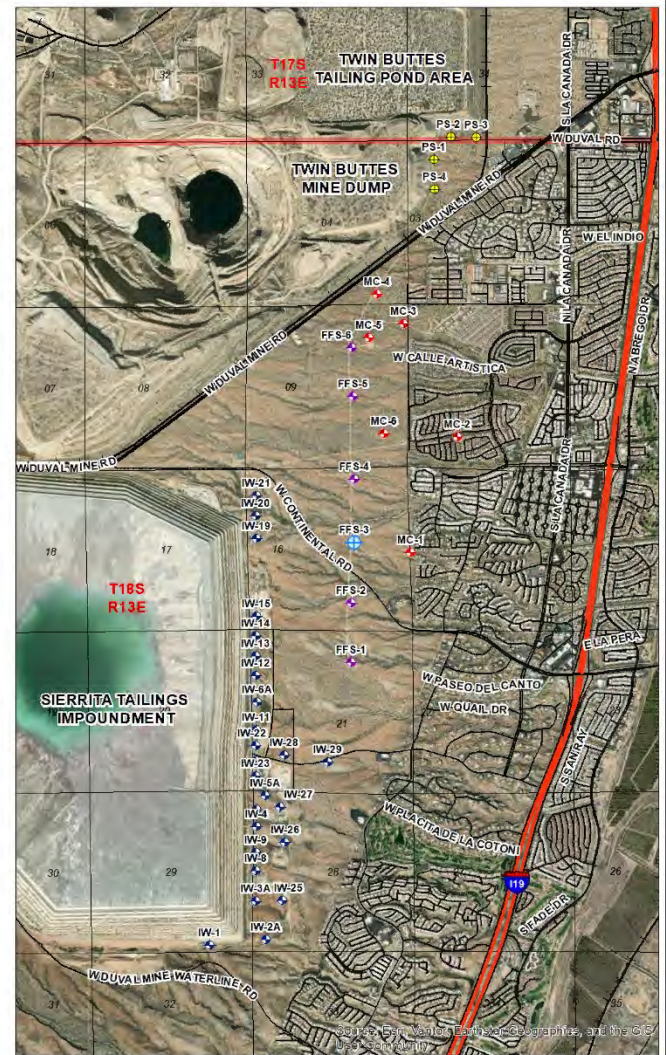
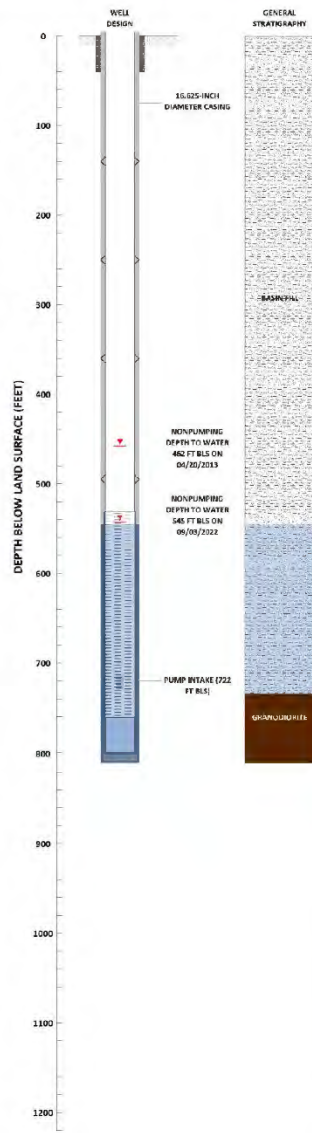
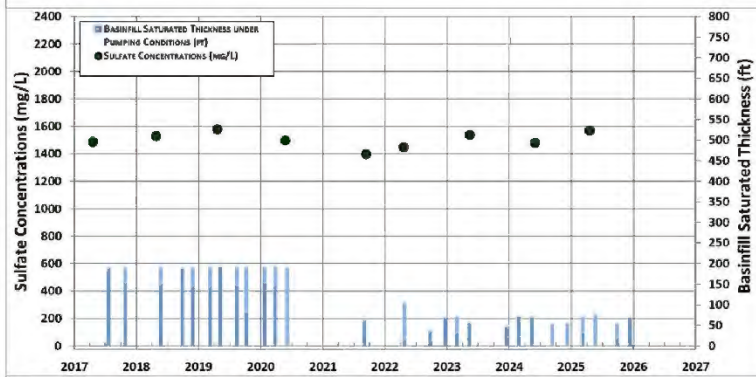
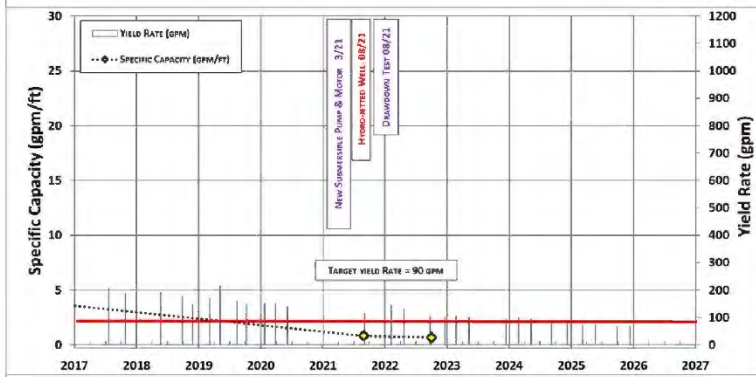
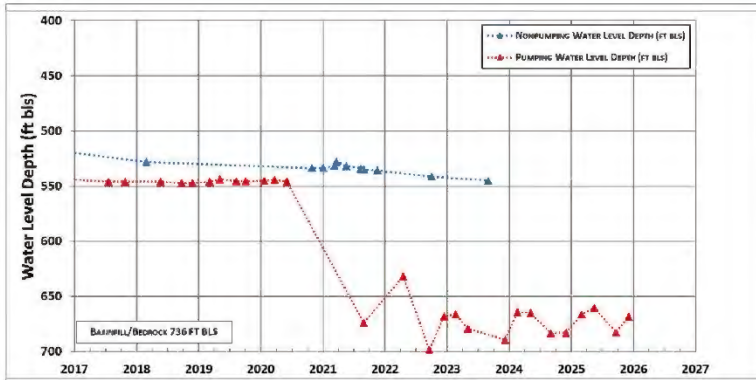
**BasinWells Associates PLLC**





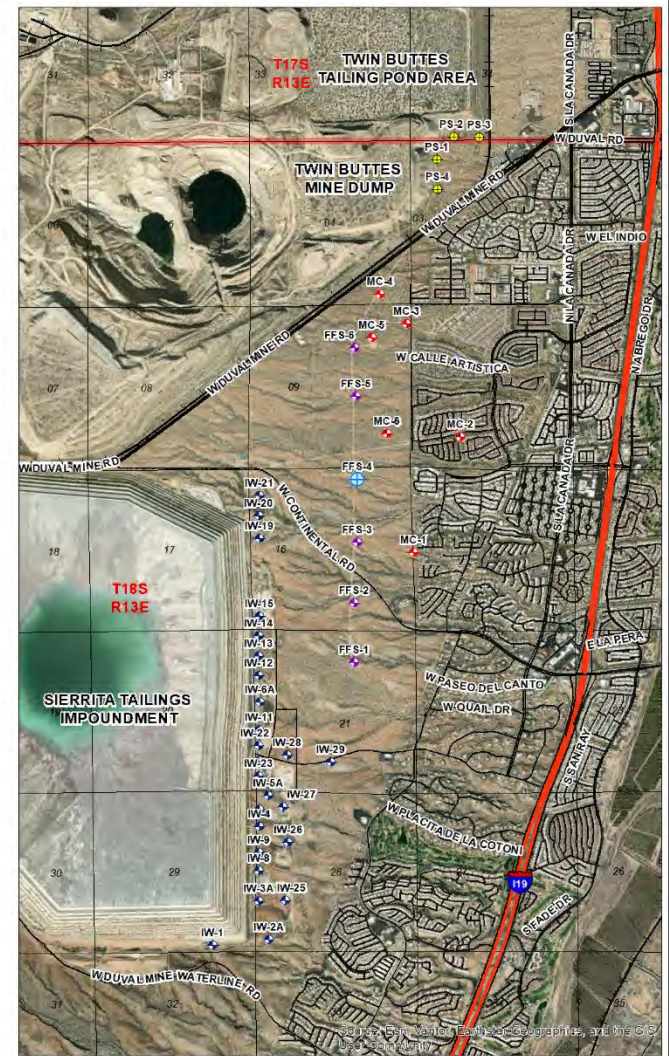
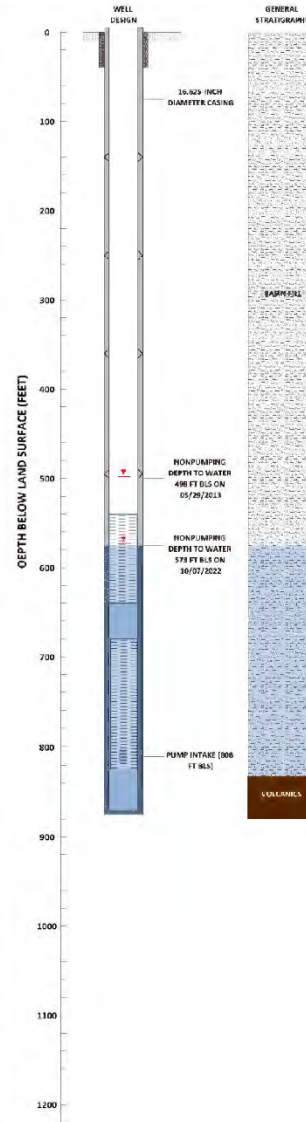
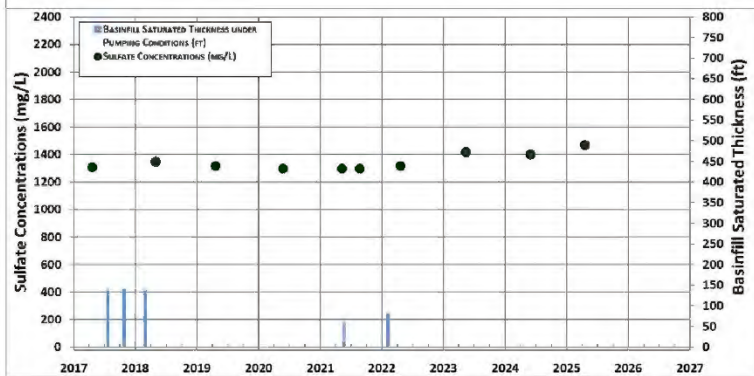
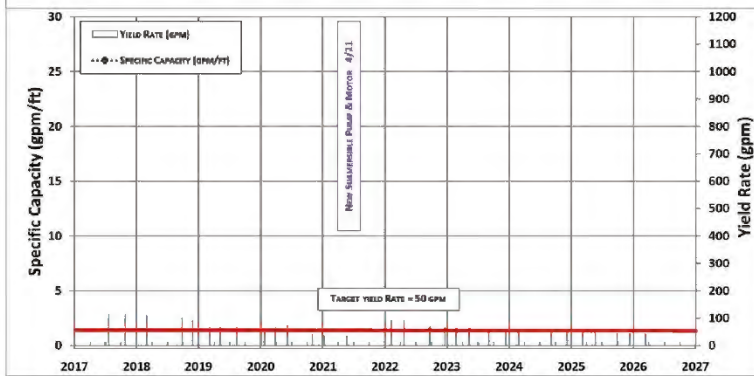
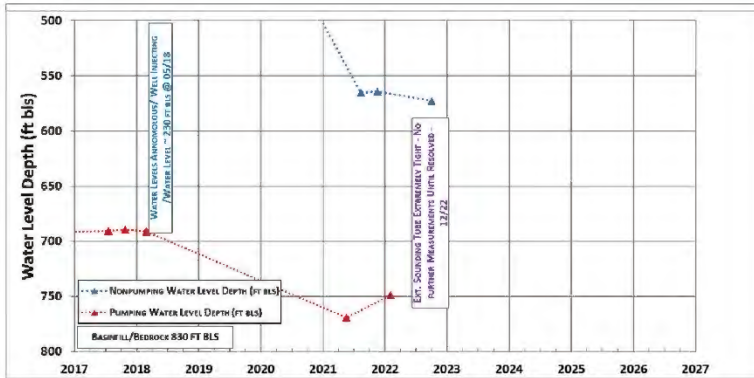
<p><b>BasinWells</b> ASSOCIATES PLLC SPECIALISTS IN GROUNDWATER DEVELOPMENT</p>	<p><b>FREEPORT-McMORAN</b> COPPER &amp; GOLD</p>	FFS-2: WATER LEVELS, YIELD, SPECIFIC CAPACITY, BASINFILL SAT. THK. AND SULFATE
	<p><b>VERSION DATE:</b> MARCH, 2026</p>	<p>CADASTRAL: D-18-13 16DCA ADWR REG. NO.: 55-221663 DRILL YEAR: 2013</p>

**BasinWells Associates PLLC**



<p>BasinWells ASSOCIATES PLLC SPECIALISTS IN GROUNDWATER DEVELOPMENT</p>	<p>FREEPORT-McMORAN COPPER &amp; GOLD</p>	<p>FFS-3: WATER LEVELS, YIELD, SPECIFIC CAPACITY, BASINFILL SAT. THK. AND SULFATE</p>
	<p>VERSION DATE: MARCH, 2026</p>	<p>CADASTRAL: D-18-13 16ACD ADWR REG. NO.: 55-221664 DRILL YEAR: 2013</p>

**BasinWells Associates PLLC**

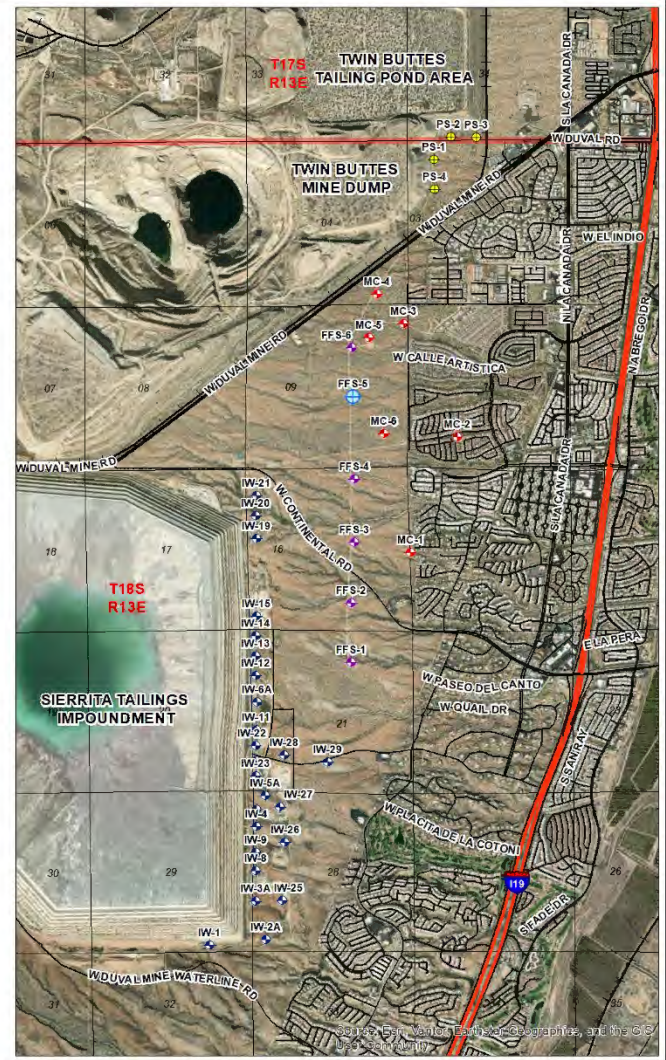
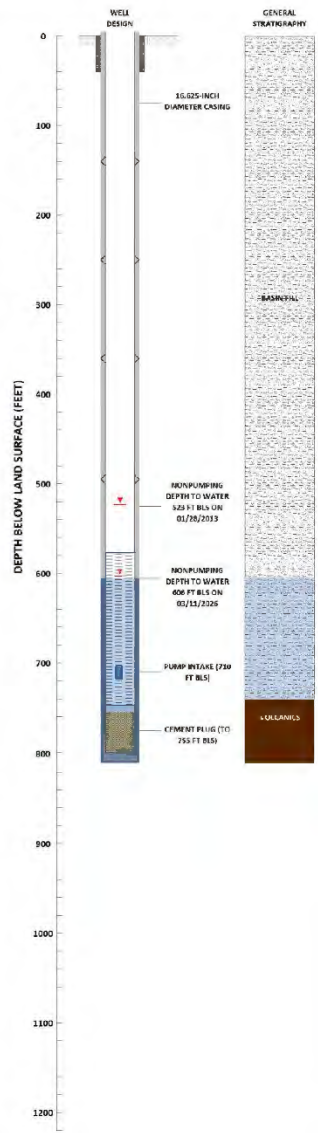
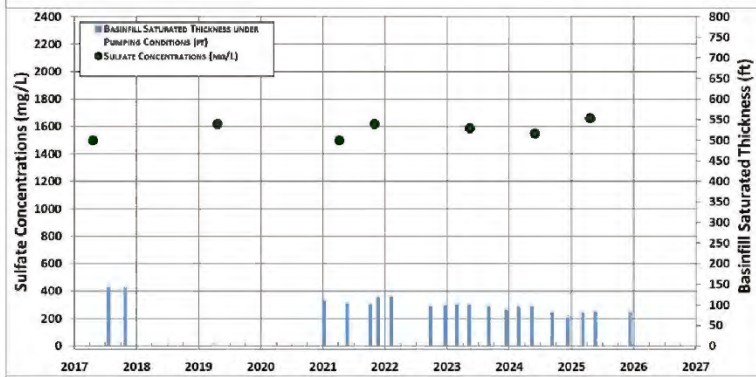
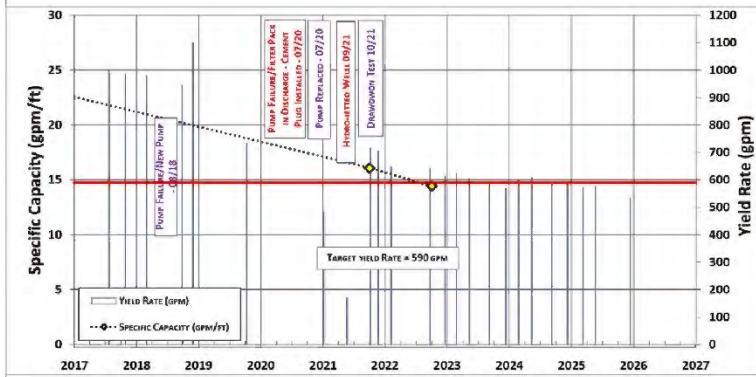
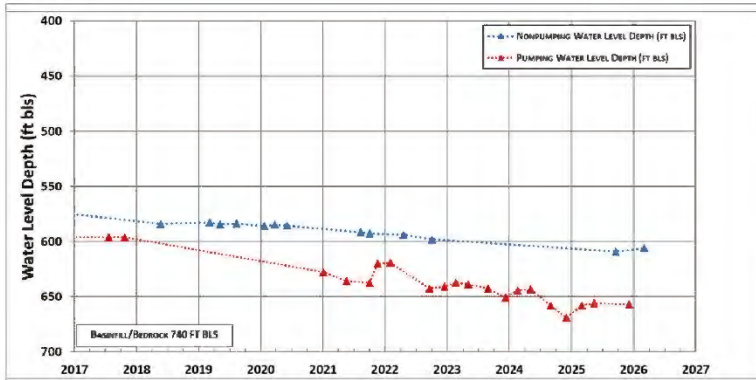


**BasinWells**  
ASSOCIATES PLLC  
SPECIALISTS IN GROUNDWATER DEVELOPMENT

**FREEMONT-MCMORAN**  
COPPER & GOLD  
**VERSION DATE:**  
**MARCH, 2026**

FFS-4: WATER LEVELS, YIELD, SPECIFIC CAPACITY, BASINFILL SAT. THK. AND SULFATE  
CADASTRAL: D-18-13 16ABA  
ADWR REG. NO.: 55-221665  
DRILL YEAR: 2012

**BasinWells Associates PLLC**



<p>BasinWells ASSOCIATES PLLC SPECIALISTS IN GROUNDWATER DEVELOPMENT</p>	<p>FREEPORT-McMORAN COPPER &amp; GOLD</p>	<p>FFS-5: WATER LEVELS, YIELD, SPECIFIC CAPACITY, BASINFILL SAT. THK. AND SULFATE</p>
	<p>VERSION DATE: MARCH, 2026</p>	<p>CADASTRAL: D-18-13 09DBA ADWR REG. NO.: 55-221666 DRILL YEAR: 2012</p>

**BasinWells Associates PLLC**

