





Figure 3-1  
Drainage Areas

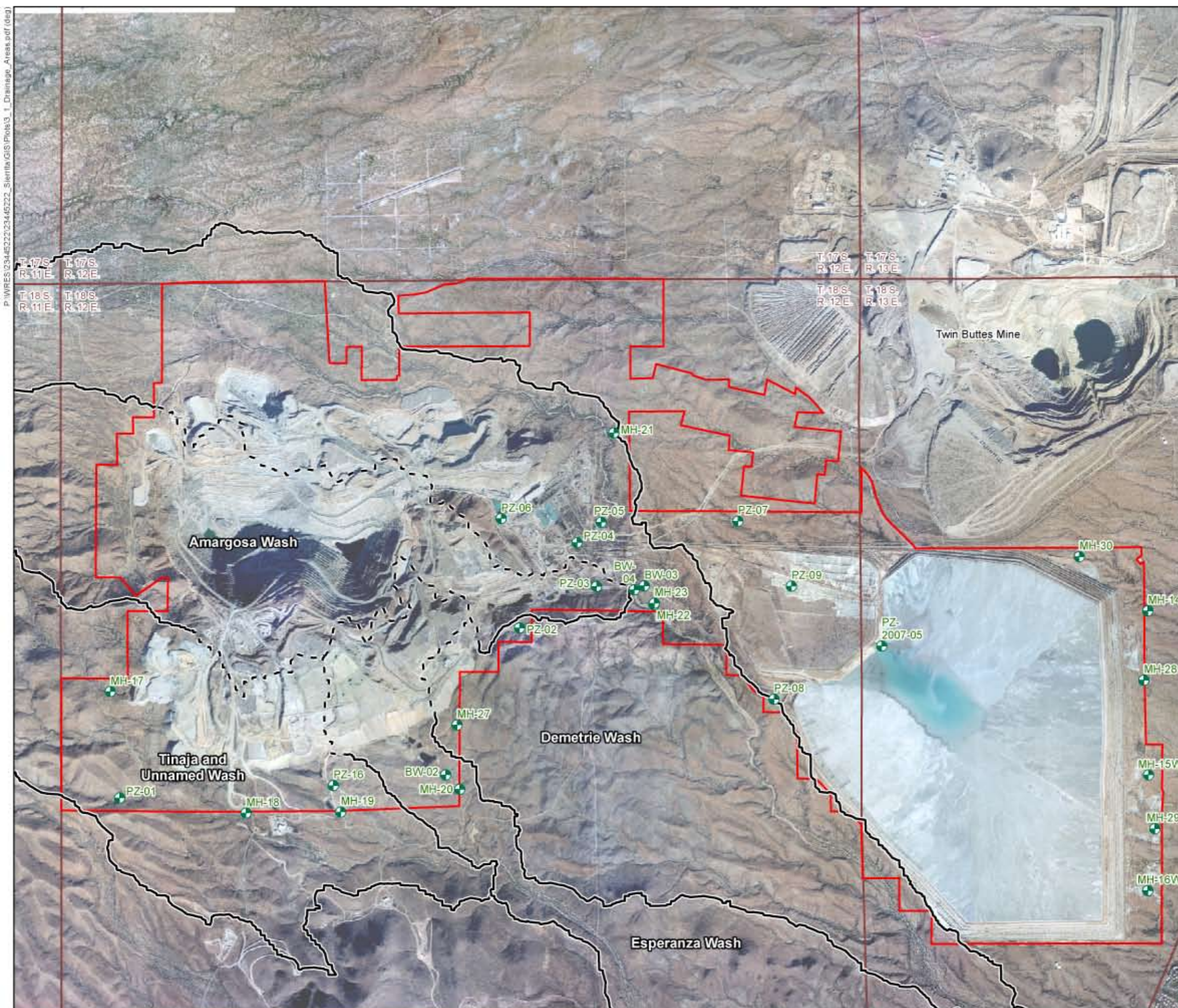
Freeport-McMoRan Sierrita Inc.

**Legend**

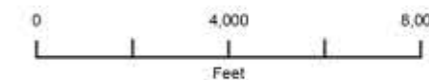
-  Monitor Wells and Piezometers
-  Approximate Watershed Boundary  
(Dashed where impacted by operations)

**General Features**

-  Sierrita Property Boundary
-  Township and Range Boundary



Source:  
Imagery - Cooper Aerial Survey Co. 2006  
Base Map - ALRIS 1997 - 2007



1 inch equals 4,000 feet



Figure 3-2  
Demetrie Wash

Freeport-McMoRan Sierrita Inc.

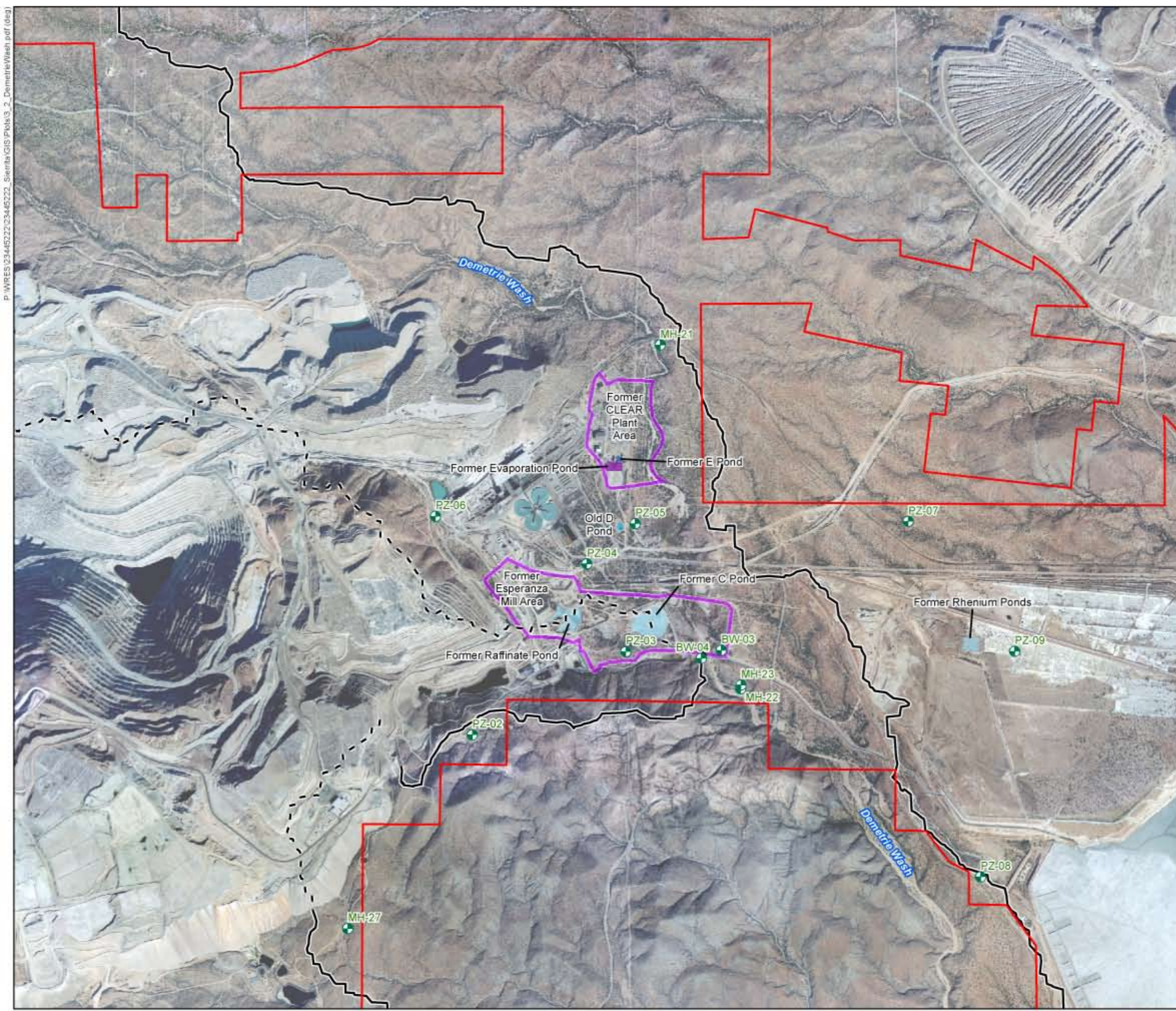
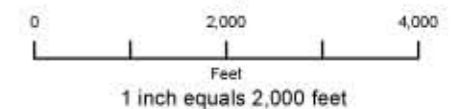
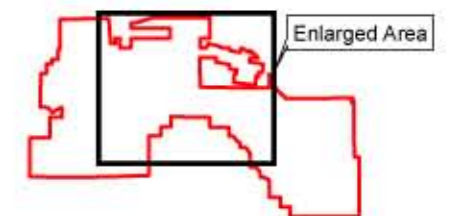
**Legend**

-  Monitor Wells and Piezometers
-  Area of Interest
-  Former Pond
-  Former Evaporation Pond
-  Former E Pond
-  Old D Pond
-  Approximate Demetrie Wash Watershed Boundary (Dashed where impacted by operations)
-  Sierrita Property Boundary

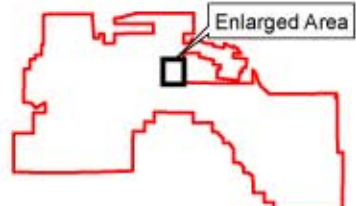
**General Features**

-  Sierrita Property Boundary

Source:  
Imagery - Cooper Aerial Co. 2006  
Base Map - ALRIS 1997 - 2005



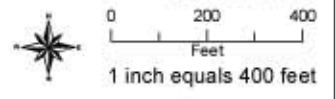




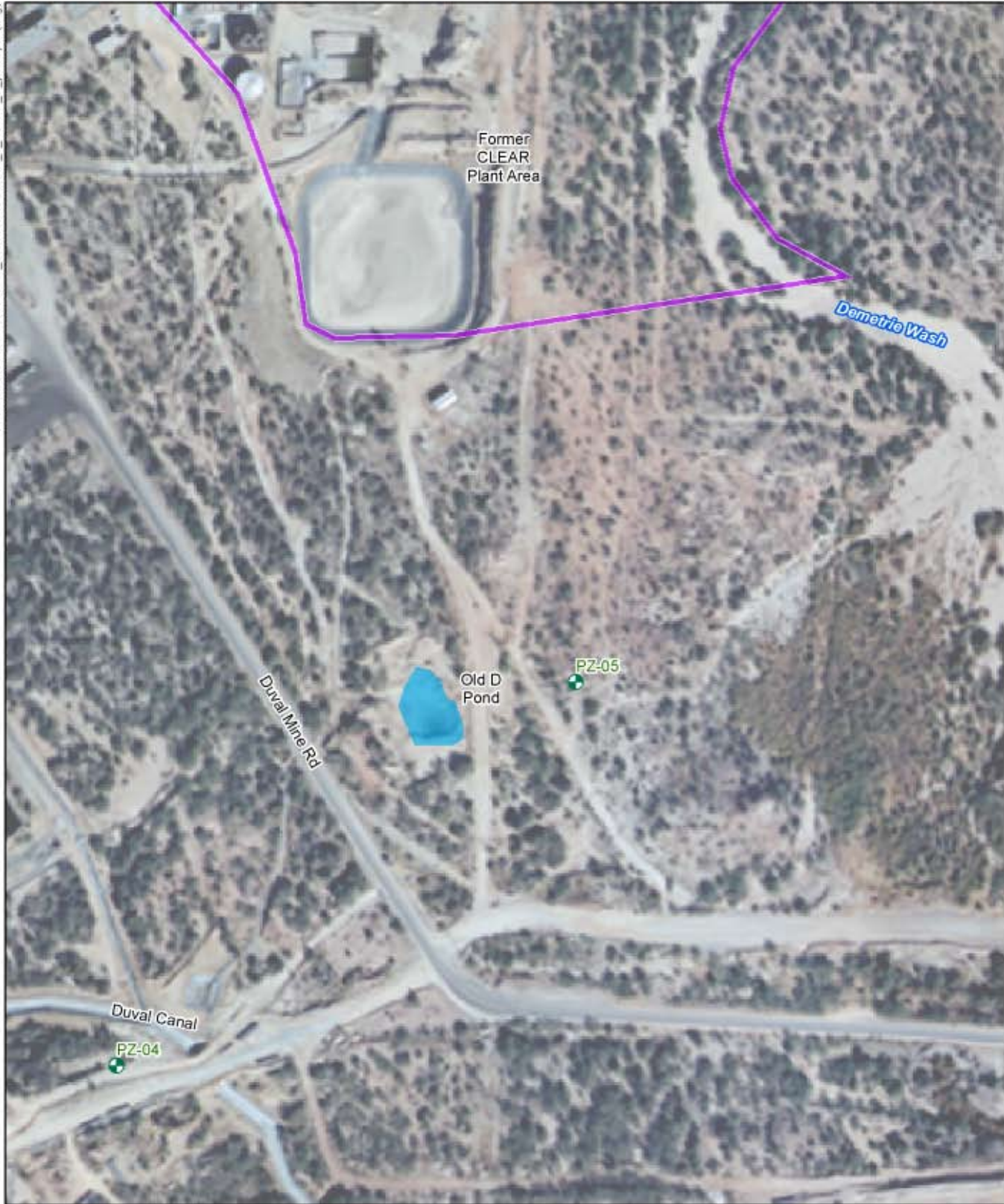
**LEGEND**

- Boring Location
- ▲ Surface Soil Sample
- Trench Location
- Former CLEAR Plant Features
- Former CLEAR Plant Tanks
- Former Evaporation Pond
- Former E Pond

Figure 3-3  
**Former CLEAR Plant Area**  
*Freeport-McMoRan Sierra Inc.*







**LEGEND**




-  Area of Interest
-  Old D Pond
-  Monitor Wells and Piezometers



Figure 3-4

**Old D Pond**

**Freeport-McMoRan  
Sierrita Inc.**

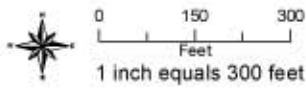




Figure 3-5  
Former Esperanza Mill Area

Freeport-McMoRan Sierrita Inc.

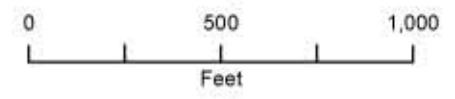
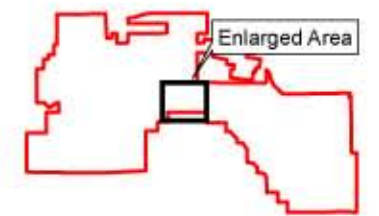
**Legend**

- Monitor Wells and Piezometers
- Boring Location
- Surface Soil Sample
- Trench Location
- Area of Interest
- Former Mill Building
- Former Pond
- Old D Pond
- Former Thickener
- C Pond Spoils
- 404 Mitigation Area

**General Features**

- Sierrita Property Boundary

Source:  
Imagery - Cooper Aerial Co. 2006  
Surface Soil Sample, Boring, and Trench Locations - Hydro Geo Chem 2008



1 inch equals 500 feet





Figure 3-6  
Amargosa Wash

Freeport-McMoRan Sierrita Inc.

**Legend**

● Monitor Wells and Piezometers

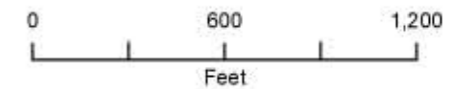
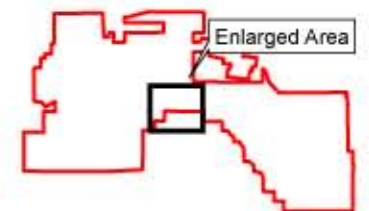
■ Former A Pond

**General Features**

— Sierrita Property Boundary

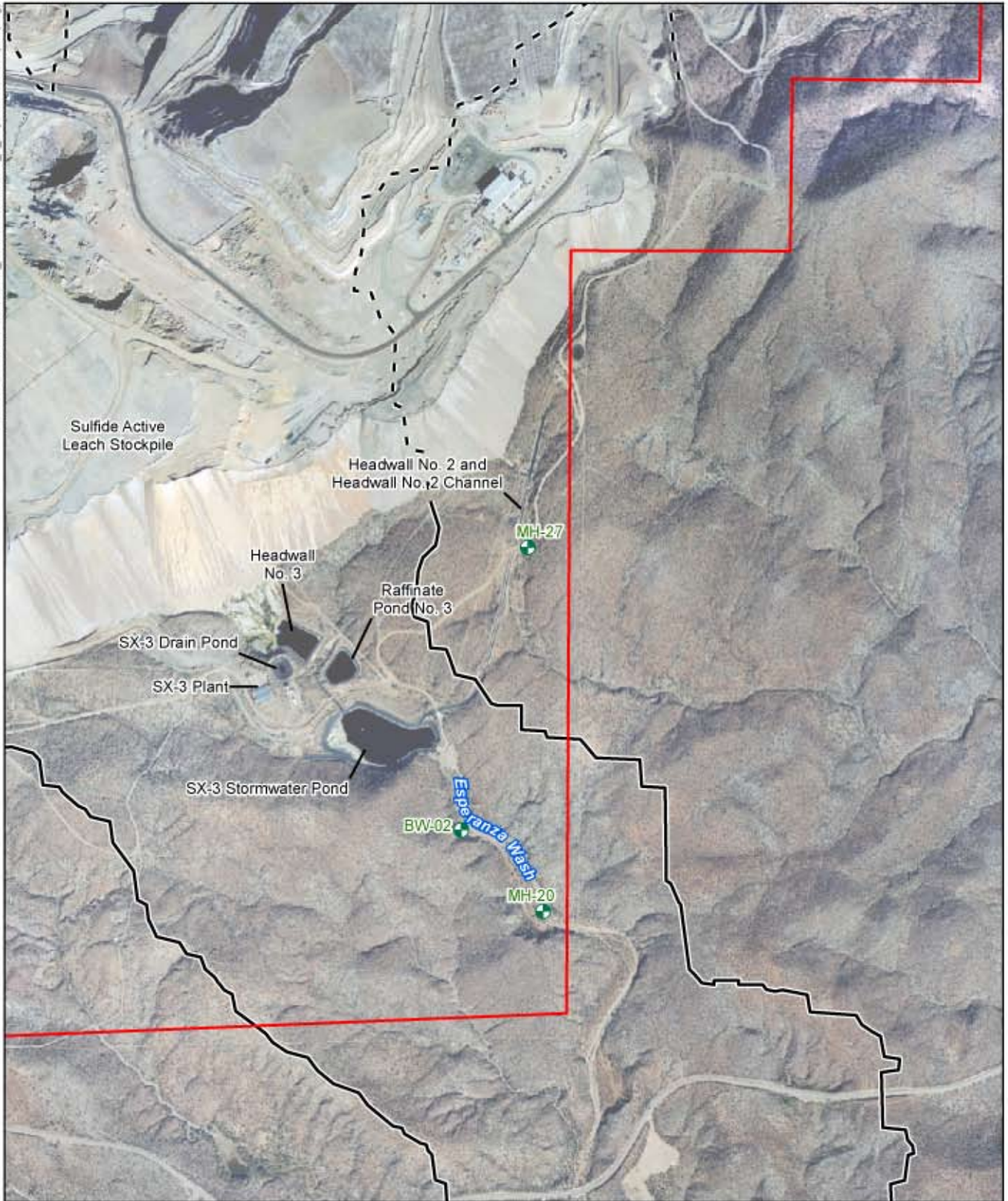


Source:  
Imagery - Cooper Aerial Co. 2006



1 inch equals 600 feet



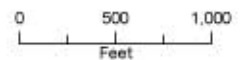
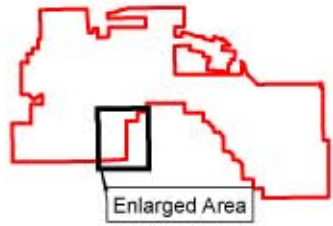


**LEGEND**

- Sierrita Project Boundary
- Approximate Esperanza Wash Watershed Boundary (Dashed where impacted by operations)
- + Monitor Wells and Piezometers

Figure 3-7

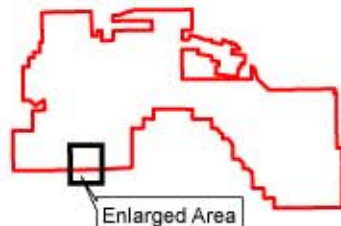
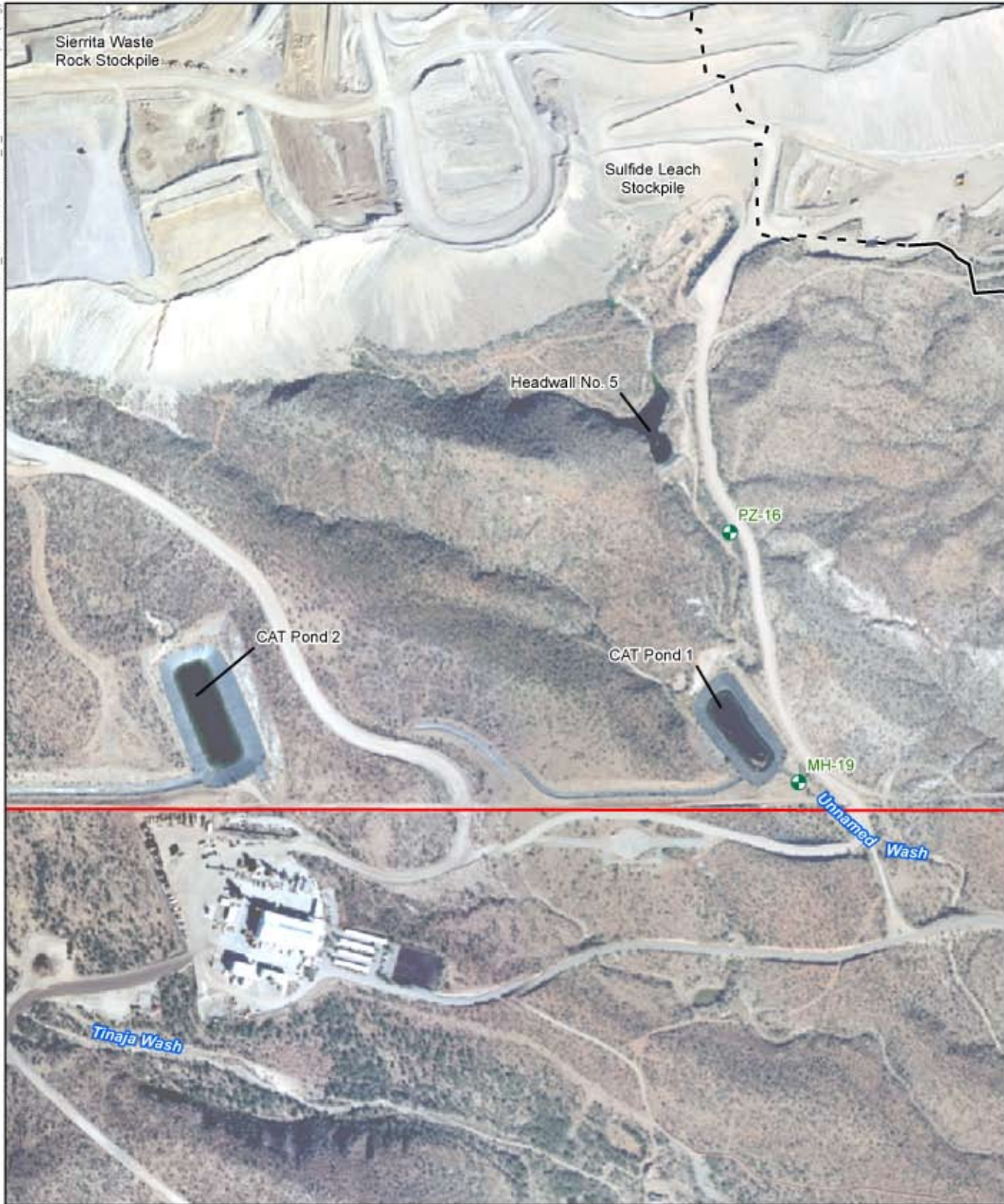
**Esperanza Wash**  
**Freeport-McMoRan**  
**Sierrita Inc.**



1 inch equals 1,000 feet

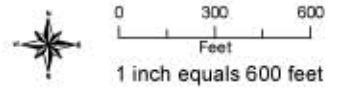


P:\WPRES\23444522\234445222\_Sierrita\GIS\Proba\3\_8\_UnnamedWash.pdf (deg)



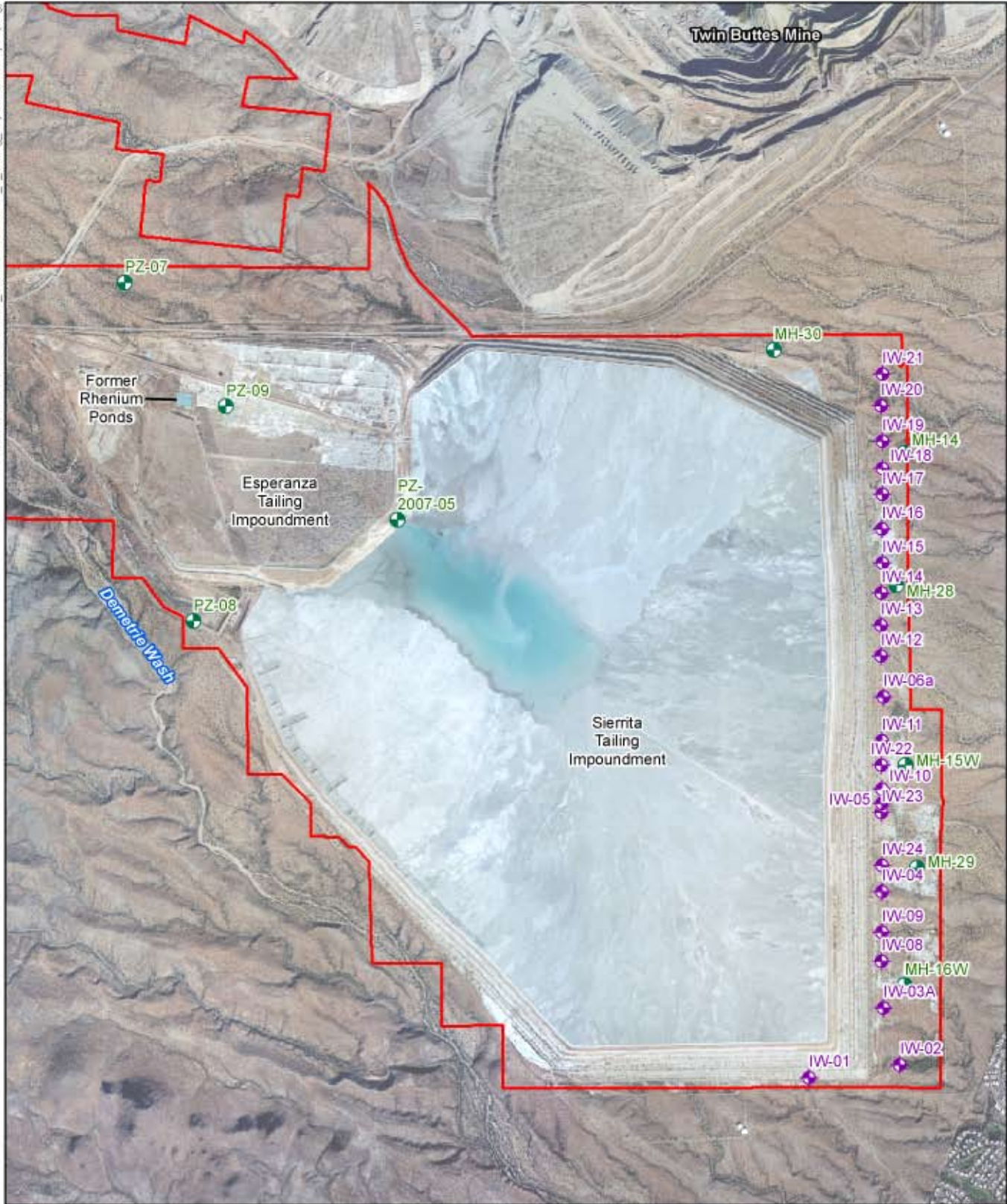
- LEGEND**
- Sierrita Project Boundary
  - Approximate Tinaja and Unnamed Wash Watershed Boundary (Dashed where impacted by operations)
  - + Monitor Wells and Piezometers

Figure 3-8  
**Tinaja and Unnamed Wash**  
*Freeport-McMoRan Sierrita Inc.*





P:\WPRES\23444522\234445222\_Sierra\GIS\Plots\3\_9\_Tailing\_impoundments.pdf (deg)



- LEGEND**
- Sierrita Property Boundary
  - Former Rhenium Ponds
  - Monitor Wells and Piezometers
  - ◆ Pumping/Interceptor Wells

**Figure 3-9**  
**Esperanza and Sierrita**  
**Tailing Impoundments**

**Freeport-McMoRan**  
**Sierrita Inc.**

