

R. 11 E. R. 12 E.

111° 7' 30"

R. 12 E.

### EXPLANATION

- Qal RECENT ALLUVIAL DEPOSITS
- Qtg BASIN-FILL DEPOSITS
- Tpt FORMATION OF TINAJA PEAK. Tpt = TUFFACEOUS CONGLOMERATE; Tpg = GRAVEL
- Tl TERTIARY INTRUSIVES, INCLUDES RUBY STAR INTRUSIVE, QUARTZ MONZONITE PORPHYRY, AND QUARTZ DIORITE PORPHYRY.
- Kd DEMETRIE VOLCANICS. ANDESITE AND DACITE BRECCIAS AND FLOWS.
- Jhr HARRIS RANCH QUARTZ MONZONITE.
- Tl OX FRAME VOLCANICS. RHYOLITE FLOWS, TUFFS, AND TUFF BRECCIAS WITH INTERCALATED LENTICULAR BEDS OF SANDSTONE/QUARTZITE AND ANDESITE/DACITE FLOWS.

- MH-17 MONITOR WELL AND IDENTIFIER
- PZ-12 PIEZOMETER AND IDENTIFIER
- ABANDONED, DESTROYED, OR INOPERATIVE WELL OR PIEZOMETER
- PT-3 EXPLORATION BOREHOLE AND IDENTIFIER
- MH-23 PROPOSED POINT OF COMPLIANCE MONITOR WELL FOR HAZARDOUS CONSTITUENTS
- SI-2 DEWATERING WELL AND IDENTIFIER
- IC-1 INCLINOMETER AND IDENTIFIER
- SPRING

- FAULT, SHOWING DIP; DASHED WHERE INFERRED; DOTTED WHERE CONCEALED.
- THRUST FAULT, SHOWING DIP; SANTEETH ON UPPER PLATE
- CONTACT, SHOWING DIP
- STRIKE AND DIP OF BEDS
- PROPERTY BOUNDARY - CYPRUS SIERRITA CORPORATION
- SECTION CORNER
- LINE OF HYDROGEOLOGIC SECTION

A A'

A A'

A A'

A A'

A A'

A A'

A A'

A A'

A A'

A A'

A A'

A A'

A A'

A A'

A A'

A A'

A A'

A A'

A A'

A A'

A A'

A A'

A A'

A A'

A A'

A A'

A A'

A A'

A A'

A A'

A A'

A A'

A A'

A A'

A A'

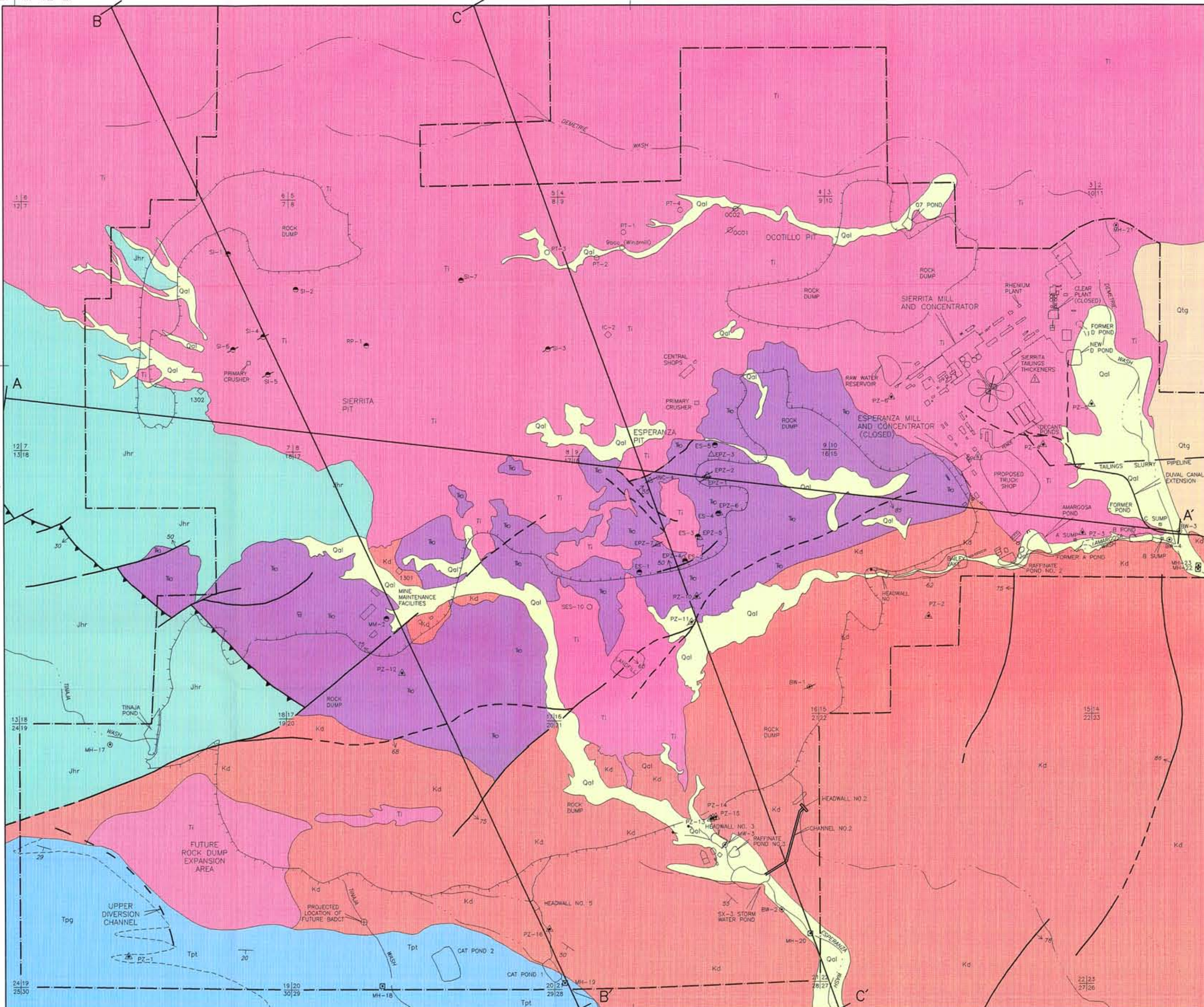
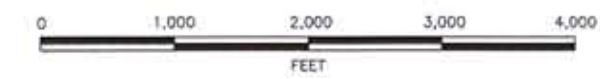
A A'

A A'

**PHELPS DODGE SIERRITA, INC.**  
PIMA COUNTY, ARIZONA

**HYDROGEOLOGIC FEATURES**  
**WEST HALF**  
**SIERRITA MINE**

**ERROL L. MONTGOMERY & ASSOCIATES, INC.** 2000  
CONSULTANTS IN HYDROGEOLOGY  
TUCSON, ARIZONA



R. 12 E. 111° 7' 30"

Compiled from Cooper (1973), and from unpublished preconstruction geologic maps

FIGURE 3